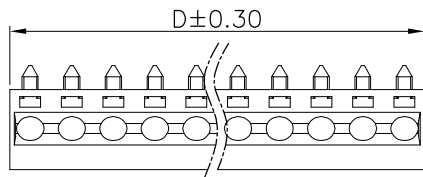
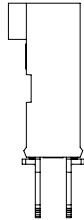
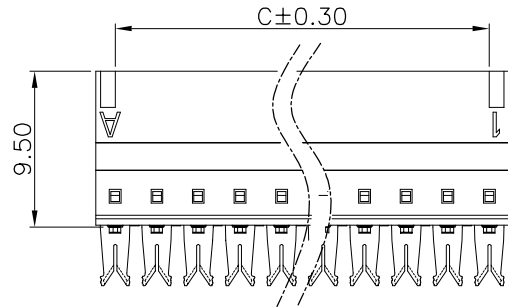
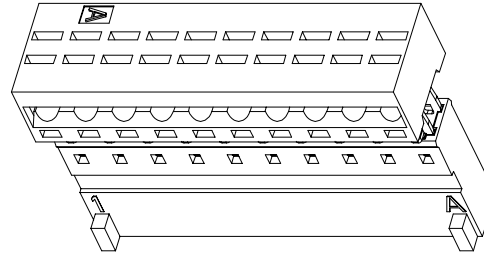
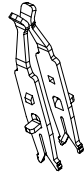
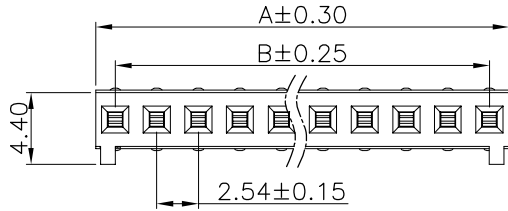


The product using material and processing must conform to the "WI-PZ-001"HSF technical standard control requirements

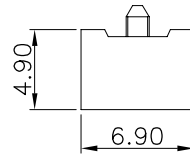
RoHS

- NOTE:
- MATERIAL SPECIFICATION:
 - HOUSING: PBT+30%G.F,94V-0
 - CONTACTS: PHOSPHOR BRONZE
 - PLATING SPECIFICATION:
 - CONTACTS: GOLD FLASH PLATED OVER NICKEL.
 - ELECTRICAL PERFORMANCE:
 - CURRENT RATING: 3A AC/DC
 - CONTACT RESISTANCE: 20 mΩ MAX
 - INSULATION RESISTANCE: 1000MΩ Min
 - DIELECTRIC WITHSTANDING : 500V
 - ENVIRONMENTAL PERFORMANCE:
 - OPERATING TEMPERATURE: -40°C~+105°C.
 - PACKAGE SPEC: TRAY
 - P/N:

SERIES NO: D25532 M 0-1 XX 6 X X X
 TYPE: 1-TYPE-A(CLOSE END)
 MALE FEMALE: M-MALE
 COLOR: A-BLACK
 ANGLE: 0-180°
 ROW NO: 1-SINGLE ROW
 PLATING: 1-G/F
 PIN Q'PY: 02~24
 TERMIPOINT: 6-PUNCTURE TYPE



TYPE-A(CLOSE END)



Circuit	Dimensions(mm)				Circuit	Dimensions(mm)			
	A	B	C	D		A	B	C	D
2	5.02	2.54	2.52	5.02	14	35.50	33.02	33.00	35.50
3	7.56	5.08	5.06	7.56	15	38.04	35.56	35.54	38.04
4	10.10	7.62	7.60	10.10	16	40.58	38.10	38.08	40.58
5	12.64	10.16	10.14	12.64	17	43.12	40.64	40.62	43.12
6	15.18	12.70	12.68	15.18	18	45.66	43.18	43.16	45.66
7	17.72	15.24	15.22	17.72	19	48.20	45.72	45.70	48.20
8	20.26	17.78	17.76	20.26	20	50.74	48.26	48.24	50.74
9	22.80	20.32	20.30	22.80	21	53.28	50.80	50.78	53.28
10	25.34	22.86	22.84	25.34	22	55.82	53.34	53.32	55.82
11	27.88	25.40	25.38	27.88	23	58.36	55.88	55.86	58.36
12	30.42	27.94	27.92	30.42	24	60.90	58.42	58.40	60.90
13	32.96	30.48	30.46	32.96					

REV.	REVISION RECORD	DATE	UNIT:mm	GENERAL TOLERANCES		SCALE:	NAME	DATE	PART.NO:	DWG.NO:	REV: A0	SHEET: 1/1
AO	NEW RELEASE	21.01.13		LINEAR	ANGLES	1:1						
				0.00±0.25	X'±3'	APPROVED	Wang_jr	23.10.07	D25532M0-1XX6XXX	ENDE05		
			SIZE: A4	0.000±0.10	X'X' ±2'	DESIGNER	Han_Gao	23.10.07	TITLE:			
						DRAWN	Zijun_Huang	23.10.07	Pitch 2.54mm 180° 单排 DIP 单排双刺破 IDC 两件套			

