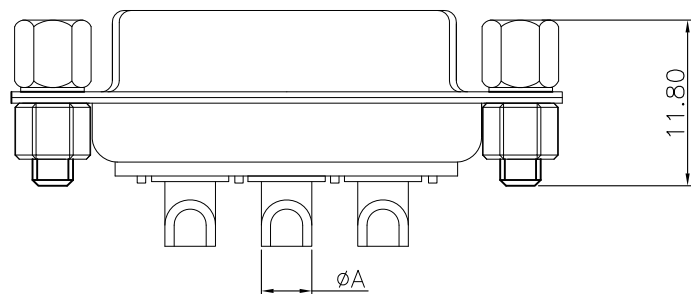
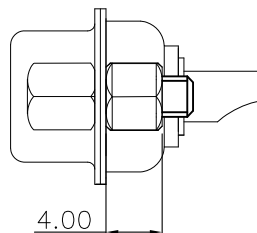
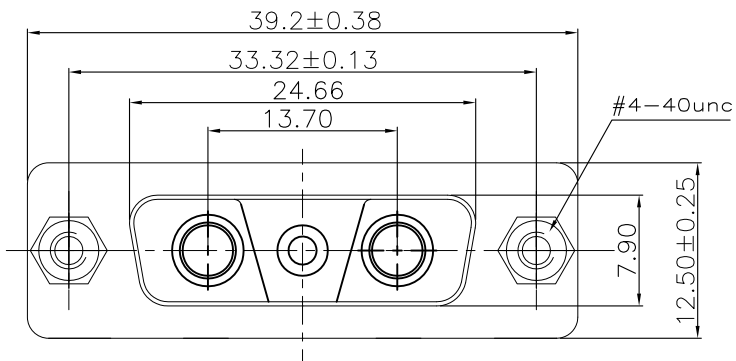


The product using material and processing must conform to the "WL-PZ-001"HSF technical standard control requirements

RoHS



NOTE:

1.MATERIALS AND FINISH

- 1-1 SHELL: SPCC-SD Tin/Ni FINISHED.
- 1-2 CONNECTOR INSULATOR: PBT THERMOPLASTIC,BLACK, 30% GLASS FILLED,UL 94V-0 RATED.
- 1-3 HIGHT POWER CONTACT: COPPER ALLOY MATERIAL, GOLD PLATED.
- 1-4 NUT:COPPER ALLOY, NICKEL PLATED
- 1-5 SCREW:COPPER ALLOY, NICKEL PLATED

2.ELECTRICAL CHARACTERISTICS

- 2-1 HIGH POWER CONTACT CURRENT RATING:10,20,30 OR 40 AMPS.
- 2-2 THE WORKING VOLTAGE: 300V.
- 2-3 HIGH POWER CONTECT RESISTANCE: 20 MILLIOHMS MAX.
- 2-4 DIELECTRIC WITHSTANDING VOLTACE: 1000 V AC FOR 1 MINUTE.
- 2-5 INSULATION RESISTANCE: 2000 MEGAOHMS MIN.

3.TEMPERATURE RATING: -55°~+125°.

4.P/N:

P/N	A	WIRE	CURRENT RATING(A)
WLDBFO-034AA1217	2.5	12#	10
WLDBFO-034AA2217	3.6	10#	20
WLDBFO-034AA3217	4.4	8#	30
WLDBFO-034AA4217	5.5	6#	40

REV.	REVISION RECORD	DATE		GENERAL TOLERANCES		SCALE: 1:1	NAME	DATE	PART.NO:	DWG.NO:	
AO	NEW RELEASE	22.10.28		LINEAR	ANGLES	APPROVED	Wang_jr	22.10.28	WLDBFO-034AAX217	ENDE05	
			UNIT:mm	X°±3°	DESIGNER	Han_Gao	22.10.28	TITLE:		REV: A0 SHEET: 1/1	
			SIZE: A4	X°X' ±2°	DRAWN	LanXuan_Hou	22.10.28	3V3 母 大电流短体焊线式后铆空芯螺母锁螺丝			

万连科技

 WanLian Technology Co., Ltd