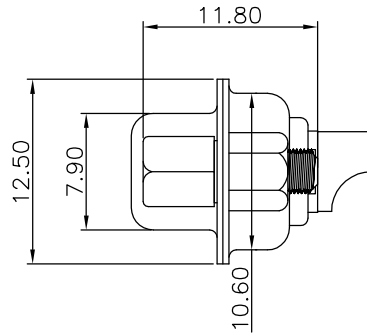
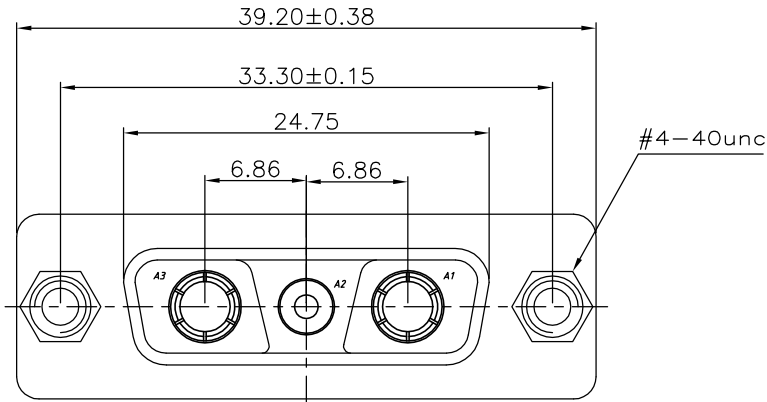


The product using material and processing must conform to the "WL-PZ-001" HSF technical standard control requirements

RoHS



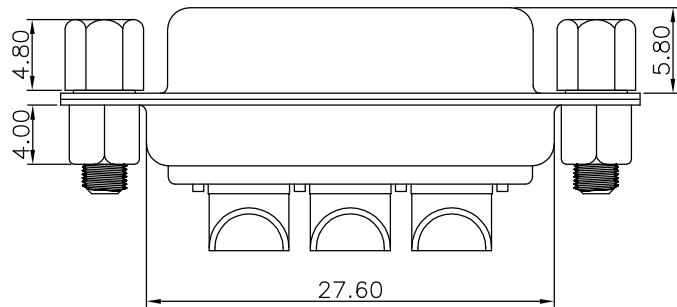
NOTE:

1. MATERIALS AND FINISH

- 1-1 SHELL: SPCC-SD Tin/Ni FINISHED.
- 1-2 CONNECTOR INSULATOR: PBT THERMOPLASTIC, BLACK, 30% GLASS FILLED, UL 94V-0 RATED.
- 1-3 HIGH POWER CONTACT: RED COPPER MATERIAL, GOLD PLATED.
- 1-4 NUT: COPPER ALLOY, NICKEL PLATED
- 1-5 SCREW: 08AL, NICKEL PLATED

2. ELECTRICAL CHARACTERISTICS

- 2-1 HIGH POWER CONTACT CURRENT RATING: 50 AMPS.
 - 2-2 THE WORKING VOLTAGE: 500V.
 - 2-3 HIGH POWER CONTACT RESISTANCE: 30 MILLIOHMS MAX.
 - 2-4 DIELECTRIC WITHSTANDING VOLTAGE: 1000 V AC FOR 1 MINUTE.
 - 2-5 INSULATION RESISTANCE: 3000 MEGAOHMS MIN.
3. TEMPERATURE RATING: -55°~+125°.



REV.	REVISION RECORD	DATE		GENERAL TOLERANCES		SCALE:	NAME	DATE	PART.NO:	DWG.NO:	
AO	NEW RELEASE	22.10.28		LINEAR	ANGLES	1:1	Wang_jr	22.10.28			
			0.0±0.35	X°REF±6°	APPROVED	Han_Gao	22.10.28	TITLE: 3V3 母焊线短体 50A 后铆空芯螺母锁螺丝	REV: A0	SHEET: 1/1	
			0.00±0.25	X°±3°	DESIGNER	LanXuan_Hou	22.10.28				
			0.000±0.10	X°X' ±2°	DRAWN						

WanLian Technology Co., Ltd