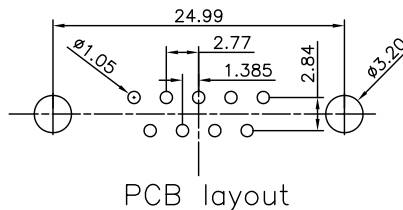
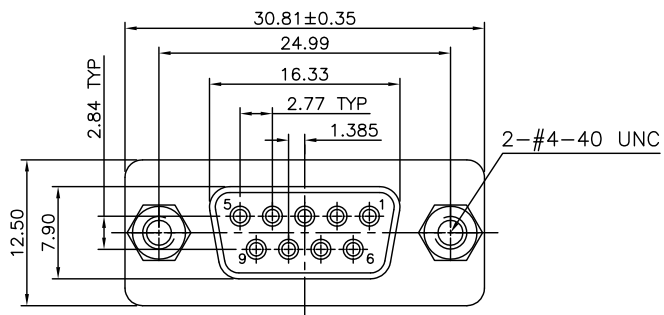
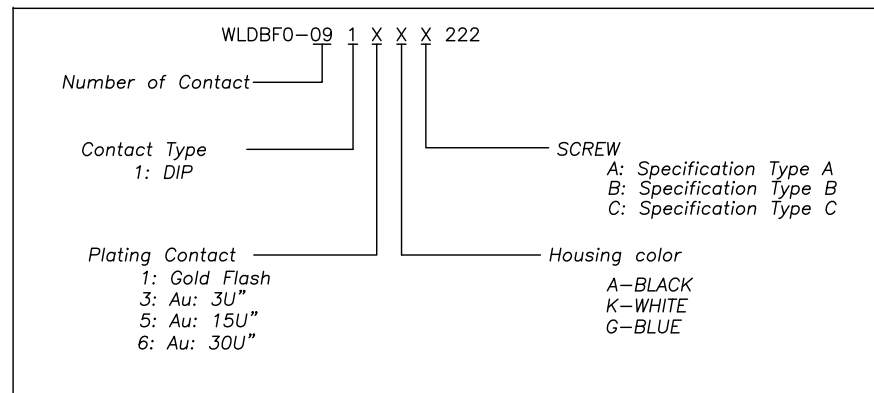
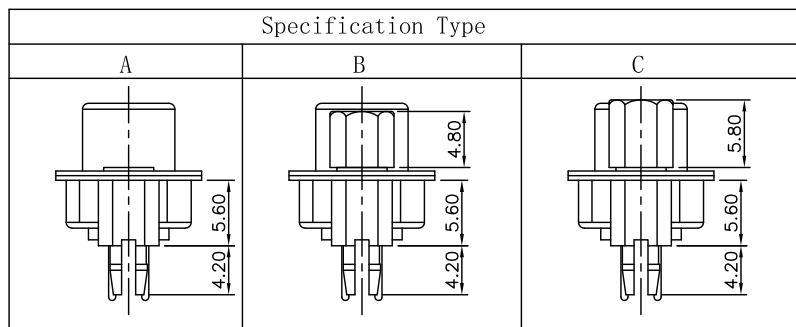
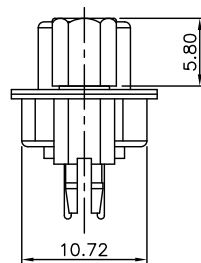
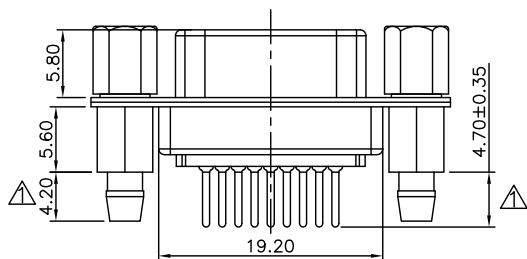


The product using material and processing must conform to the "WI-PZ-001"HSF technical standard control requirements

RoHS



NOTE:
 1.MATERIALS AND FINISH:
 1-1.HOUSING:PBT FIBER 30% (UL94V-0)
 1-2.CONTACTS:BRASS GOLD PLATED
 1-3.SHELL: SPCC-SD NICKEL PLATED
 1-4.RIVET: COPPER ALLOY NICKEL PLATED
 1-5.SCREW:COPPER ALLOY NICKEL PLATED
 2.ELECTRICAL PERFORMANCE:
 2-1.CURRENT RATING:3A
 2-2.VOLTAGE RATING:300V AC MAX
 2-3.CONTACT RESISTANCE: 30mΩ MAX.
 2-4.INSULATION RESISTANCE: 1000MΩ MIN @500VDC
 2-5.DIELECTRIC WITHSTANDING VOLTAGE: 1000VAC/MINUTE
 3.ENVIRONMENTAL PERFORMANCE:
 OPERATING TEMPERATURE: -40°C~+85°C.



REV.	REVISION RECORD	DATE	GENERAL TOLERANCES		SCALE:	NAME	DATE	PART.NO:	DWG.NO:	 WanLian Technology Co., Ltd
A0	NEW RELEASE	21.01.13	 LINEAR 0.0±0.35	 ANGLES X'REF±6°	1:1	Wang_jr	21.01.13	WLDBF0-091XXX222	ENDE05	
A1	Add 4.2 and 4.7	23.10.25			UNIT:mm	X'±3°	DESIGNER	Ou_jian	21.01.13	
			SIZE: A4	0.000±0.10	X'X' ±2°	DRAWN	Hou-lanxuan	21.01.13	REV: A1	