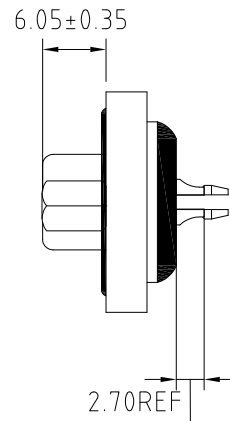
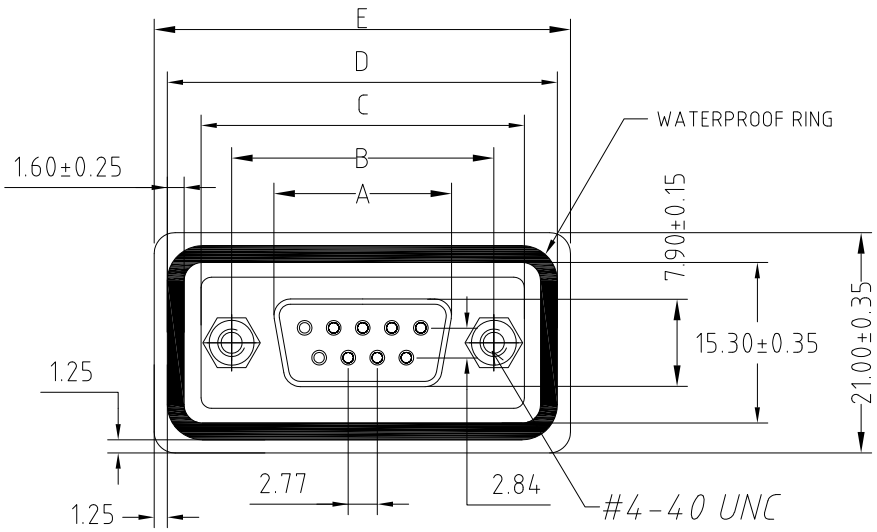


The product using material and processing must conform to the "WL-PZ-001" HSF technical standard control requirements

RoHS



NOTE:

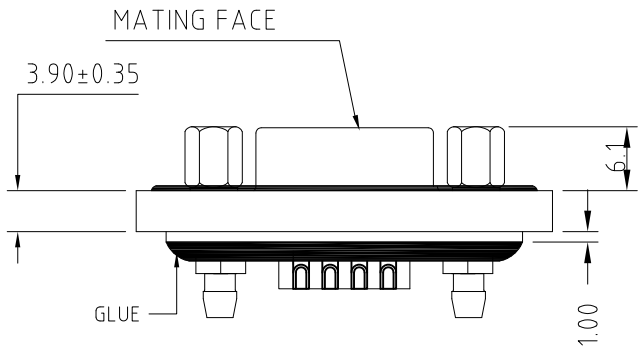
1. MATERIALS AND FINISH

- 1-1 SHELL: STEEL MATERIAL, FRONT SHEEL NICKEL FINISHED  
NICKEL FINISHED, BACK SHEEL TIN FINISHED
- 1-2 CONNECTOR INSULATOR: PBT THERMOPLASTIC, BLACK,  
30% GLASS FILLED, UL 94V-0 RATED.
- 1-3 CONTACT MATERIAL : BRASS  
CONTACT FINISH : FULL GOLD FLASH

2. ELECTRICAL CHARACTERISTICS

- 2-1 CONTACT CURRENT RATING : 5.0 AMPS
- 2-2 CONTACT RESISTANCE : 30 MILLIOHMS MAX.
- 2-3 DIELECTRIC WITHSTANDING VOLTAGE : 1000 V AC MIN.
- 2-4 INSULATION RESISTANCE : 5000 MEGAOHMS MIN.

3. TEMPERATURE RATING : -55°C~+105°C



P/N	No. of Contact	A ±0.25 ±0.10	B ±0.13 ±0.05	C ±0.38 ±0.15	D ±0.25 ±0.10	E ±0.25 ±0.10
WLDBF0-094AA3189	09	16.30	25.00	30.80	37.10	39.60
WLDBF0-254AA3189	25	38.30	47.04	53.04	59.10	61.60

REV.	REVISION RECORD	DATE		GENERAL TOLERANCES		SCALE: 1:1	NAME	DATE	PART.NO:	DWG.NO:	
AO	NEW RELEASE	22.10.28		LINEAR	ANGLES	APPROVED	Wang_jr	22.10.28	WLDBF0-XX4AA3189	ENDE05	
			0.0±0.35	X°REF±6°	DESIGNER	Han_Gao	22.10.28	TITLE:		WanLian Technology Co., Ltd REV: AO SHEET: 1/1	
			UNIT:mm	X°±3°	DRAWN	LanXuan_Hou	22.10.28	DB 母头防水鲫鱼叉系列			
			SIZE: A4	0.000±0.10	X°X' ±2°						