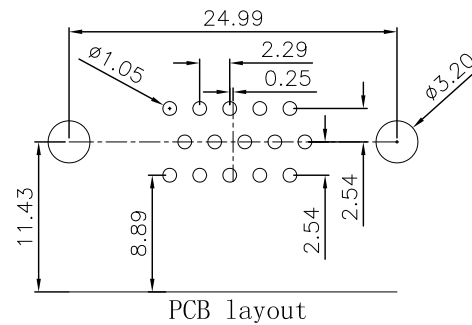
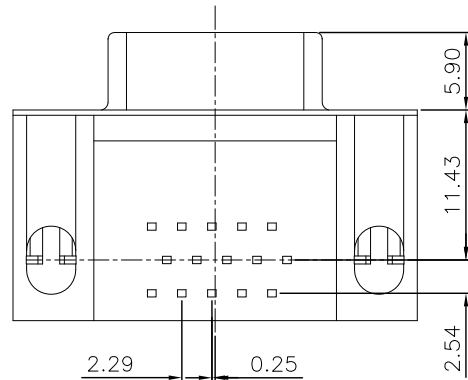
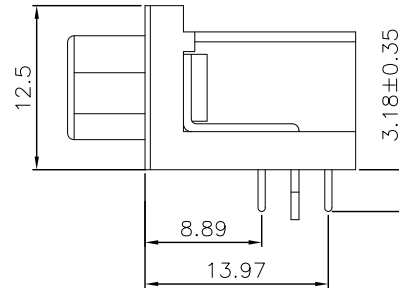
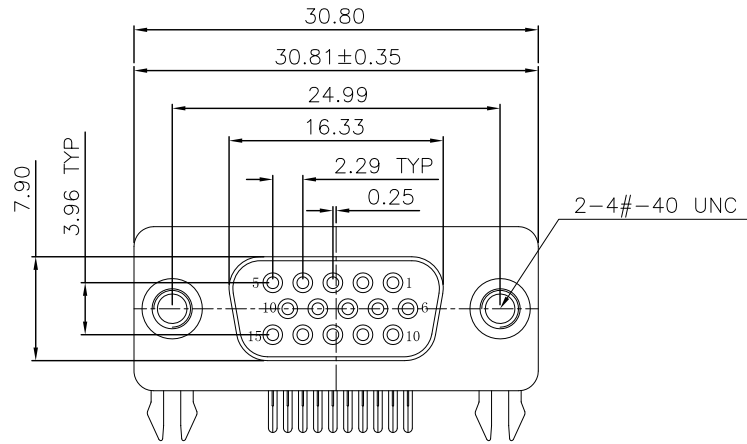


The product using material and processing must conform to the "WI-PZ-001" HSF technical standard control requirements

RoHS



NOTE

1.MATERIAL:

- 1.1 INSULATOR: PBT+30% GLASS FIBER UL94V-0
COLOR:BLACK
- 1.2 TERMINAL: COPPER ALLOY BRASS T=0.20±0.02mm
GOLD FLASH ON CONTACT AREA AND TIN 80U" ON SOLDER
TAIL; NICKEL:30U" ON THE BASE
- 1.3 SHELL: SPCC-SD T=0.35±0.02mm
- 1.4 BOARD LOCK: COPPER ALLOY
- 1.5 SCREW: COPPER ALLOY

2.ELECTRICAL:

- 2.1 INSULATOR RESISTANCE: 1000MEGOHMS MIN AT 500V DC.
- 2.2 DIELECTRIC WITHSTANDING VOLTAGE: 500V AC R.M.S
- 2.3 VOLTAGE TATING: 40V AC (RMS) CONTINUOUS MAX.
- 2.4 CURRENT RATING: 3A.
- 2.5 CONTGACT RESISTANCE: 30 MILLIOHMS MAX.

3.MECHANICAL

- 3.1 INSERTION/EXTRACTION FORCE PER CONTACT: 3.74Kgf Max
0.33Kgf Min.

4.ENVIRONMENTAL

- TEMPERATURE RANGE:-55°C TO + 105°C.

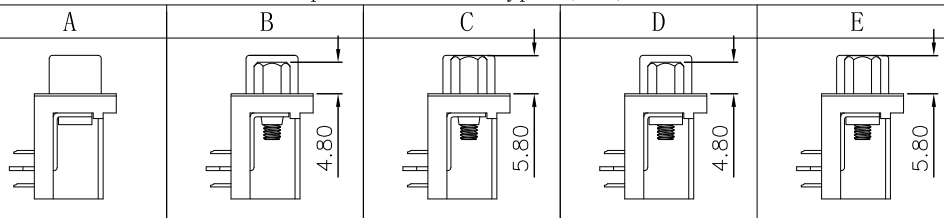
P/N:
WLDBF9-151XXX059

Plating Contact
1: Gold Flash

Housing color
A: Black
K: White
G: Blue

SCREW
A: Specification Type A
B: Specification Type B
C: Specification Type C
D: Specification Type D
E: Specification Type E

Specification Type (1:2)



REV.	REVISION RECORD	DATE		GENERAL TOLERANCES		SCALE: 1:1	NAME	DATE	PART.NO: WLDBF9-1511AD059	DWG.NO: ENDE05	 WanLian Technology Co., Ltd	
A0	NEW RELEASE	21.01.13		LINEAR	ANGLES	APPROVED	Wang_jr	23.08.04				
A1	更新图面	23.08.04	UNIT:mm	0.00±0.25	X°±3°	DESIGNER	Ou_jian	23.08.04	TITLE: HDR 15F 8.89 90°DIP	REV: A1		SHEET: 1/1
			SIZE: A4	0.000±0.10	X°X' ±2°	DRAWN	Hou-lanxuan	23.08.04				