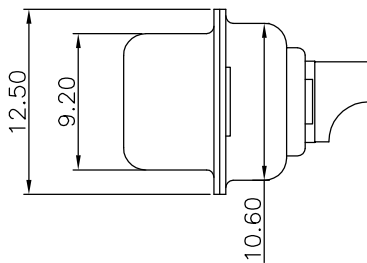
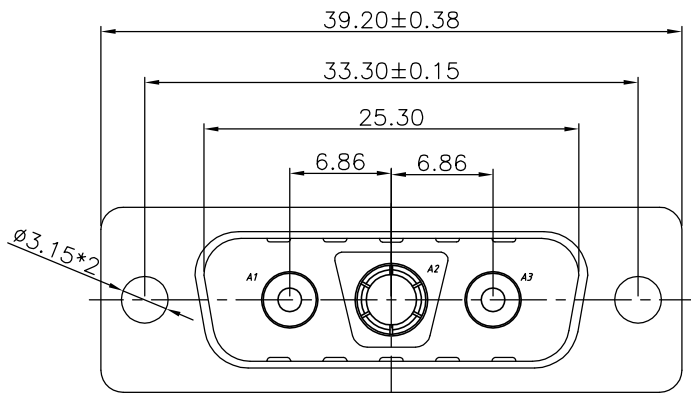


The product using material and processing must conform to the "WL-PZ-001"HSF technical standard control requirements

RoHS



NOTE:

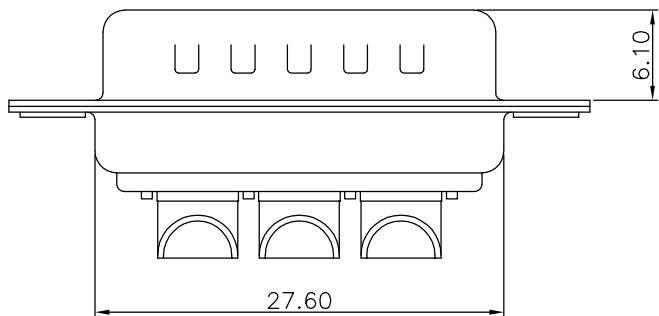
1.MATERIALS AND FINISH

- 1-1 SHELL: SPCC-SD Tin/Ni FINISHED.
- 1-2 CONNECTOR INSULATOR: PBT THERMOPLASTIC,BLACK, 30% GLASS FILLED,UL 94V-0 RATED.
- 1-3 HIGHT POWER CONTACT: RED COPPER MATERIAL, GOLD PLATED.

2.ELECTRICAL CHARACTERISTICS

- 2-1 HIGH POWER CONTACT CURRENT RATING:50 AMPS.
- 2-2 THE WORKING VOLTAGE: 500V.
- 2-3 HIGH POWER CONTECT RESISTANCE: 30 MILLIOHMS MAX.
- 2-4 DIELECTRIC WITHSTANDING VOLTAGE: 1000 V AC FOR 1 MINUTE.
- 2-5 INSULATION RESISTANCE: 3000 MEGAOHMS MIN.

3.TEMPERATURE RATING: -55°~+125°.



REV.	REVISION RECORD	DATE		GENERAL TOLERANCES		SCALE: 1:1	NAME	DATE	PART.NO: WLDBM0-034AAA221	DWG.NO: ENDE05	 WanLian Technology Co., Ltd
A0	NEW RELEASE	22.10.28		LINEAR	ANGLES	APPROVED	Wang_jr	22.10.28			
			0.0±0.35	X'REF±6°	DESIGNER	Han_Gao	22.10.28	TITLE: 3V3 公 焊线短体 50A传统铆合			
			UNIT:mm	X'±3°	DRAWN	LanXuan_Hou	22.10.28				
			SIZE: A4	0.000±0.10	X'X' ±2°				REV: A0	SHEET: 1/1	