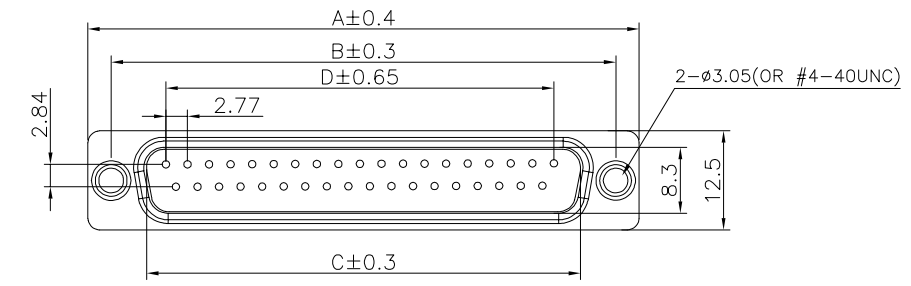
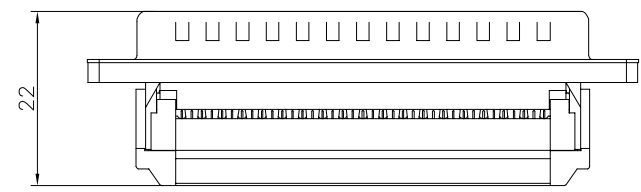
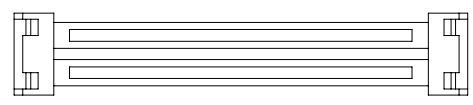
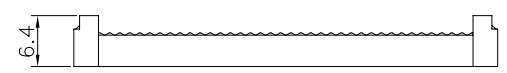
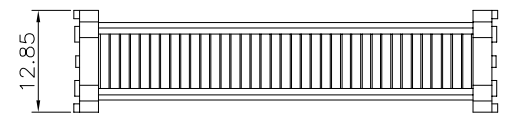
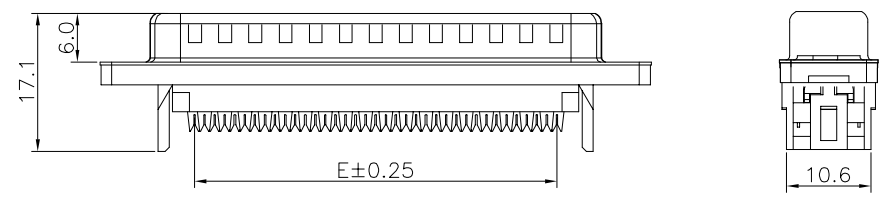


RoHS

The product using material and processing must conform to the "WL-PZ-001"HSF technical standard control requirements



NOTE:
 1.MATERIAL SPECIFICATION:
 1-1.HOUSING:PBT GLASS FIBSS (UL94V-0),BLUE
 1-2.CONTACTS:BRASS
 1-3.SHELL: SPCC.
 2.PLATING SPECIFICATION:
 2-1.CONTACTS:
 GOLD FLASH PLATED ON CONTACT AREA,
 TIN PLATED ON SOLDER TAILS AREA,
 NICKEL UNDERPLATING OVER ALL.
 2-2. SHELL:
 PLATING NICKEL
 3.ELECTRICAL PERFORMANCE:
 3-1.CURRENT RATING:1.0A AC,DC
 3-2.VOLTAGE RATING:250V AC,DC
 3-3.CONTACT RESISTANCE: 20 mΩ MAX.
 3-4.INSULATION RESISTANCE: 1000MΩ Min
 3-5.DIELECTRIC WITHSTANDING VOLTAGE: 500V AC Min.
 4.ENVIRONMENTAL PERFORMANCE:
 OPERATING TEMPERATURE: -40°C~+105°C.



Product Number	Circuit	Dimensions(mm)				
		A	B	C	D	E
WLDBM0-0961G1207	09	30.80	25.00	16.95	11.08	10.16
WLDBM0-1561G1207	15	39.14	33.30	25.30	19.39	17.78
WLDBM0-2561G1207	25	53.05	47.04	38.96	33.24	30.48
WLDBM0-3761G1207	37	69.32	63.50	55.42	49.86	45.72

REV.	REVISION RECORD	DATE	UNIT:mm	GENERAL TOLERANCES		SCALE:	NAME	DATE	PART.NO:	DWG.NO:	WanLian Technology Co., Ltd
AO	NEW RELEASE	22.10.28		LINEAR	ANGLES	1:1	Wang_jr	22.10.28	WLDBM0-XX61G1207	ENDE05	
			0.00±0.25	X'±3'		Han_Gao	22.10.28	TITLE:		REV: A0	SHEET: 1/1
			0.000±0.10	X'X' ±2'		LanXuan_Hou	22.10.28	IDC D-SUB 公座 压排式			

