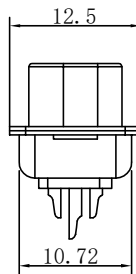
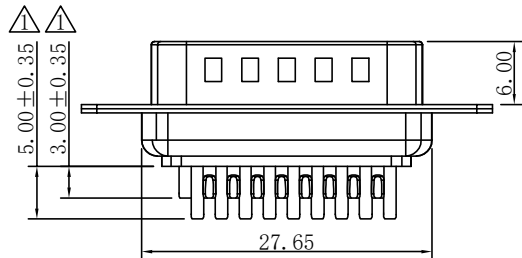
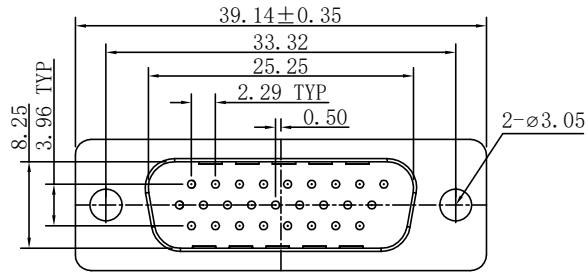


The product using material and processing must conform to the "WI-PZ-142"HSF technical standard control requirements

RoHS



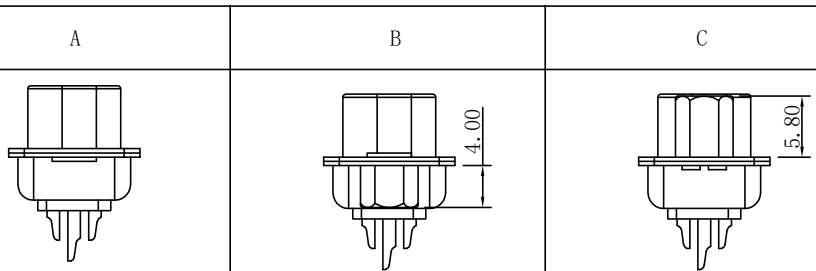
**MATERIAL:**

- 1、HOUSING: PBT+30% G. F(UL94V-0) BLACK
- 2、CONTACTS: BRASS、NI/AU/SN PLATED
- 3、SHELL: SPCC、CU/Ni/SN PLATED
- 4、NUT: BRASS、NI PLATED .
- 5、SCREW: BRASS、NI PLATED .

**CHARACTERISTICS/特性:**

- 1、RATED VOLTAGE: 250V AC CD
- 2、RATED CURRENT: 3.0AMP
- 3、CONTACT RESISTANCE: 30MΩ MAX.
- 4、INSULATION RESISTANCE: 1000 MΩ MIN. 500V DC
- 5、ELECTRIC PRESSURE: KEEPING 60 SECOND IN AC 500V/1MA
- 6、OPERATING TEMPERATURE: -55℃~105℃

Specification Type



**P/N:** WLDBM0-264XXX046

Number of Contact

Contact Type  
4: SOLDERING

Plating Contact  
1: Gold Flash  
3: Au: 3U"  
6: Au: 30U"

SCREW  
A: Specification Type A  
B: Specification Type B  
C: Specification Type C  
  
Housing color  
A: Black  
S: Nature

REV.	REVISION RECORD	DATE		GENERAL TOLERANCES		SCALE: 1:1	NAME	DATE	PART.NO:	DWG.NO:	
A0	NEW RELEASE	21.01.13		LINEAR	ANGLES	APPROVED	Wang_jr	21.01.13	WLDBM0-264XXX046	ENDE05	
A1	2.8Cha3.0//4.8Cha5.0	23.8.16	UNIT:mm	0.0±0.35	X'REF±6°	DESIGNER	Ding_bo	21.01.13	TITLE:		REV: A1    SHEET: 1/1
			SIZE: A4	0.00±0.25	X'±3°	DRAWN	Ou_jian	21.01.13	HDB 26M SOLDERING		