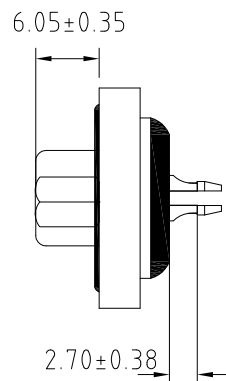
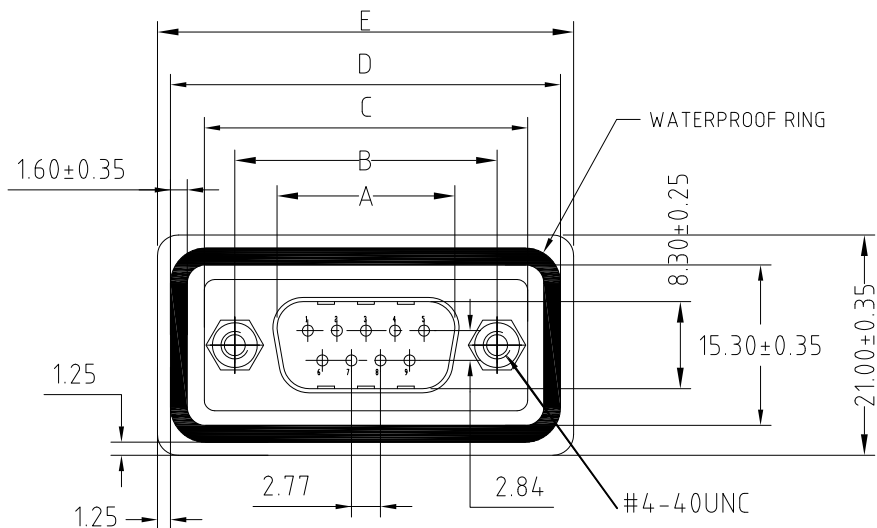


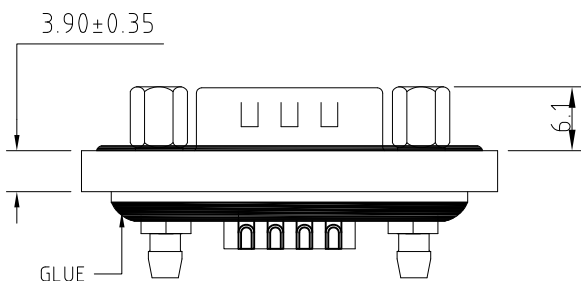
The product using material and processing must conform to the "WL-PZ-001" HSF technical standard control requirements

RoHS



NOTE:

1. MATERIALS AND FINISH
 - 1-1 SHELL: STEEL MATERIAL, FRONT SHEEL NICKEL FINISHED NICKEL FINISHED, BACK SHEEL TIN FINISHED
 - 1-2 CONNECTOR INSULATOR: PBT THERMOPLASTIC, BLACK, 30% GLASS FILLED, UL 94V-0 RATED.
 - 1-3 CONTACT MATERIAL : BRASS CONTACT FINISH : FULL GOLD FLASH
2. ELECTRICAL CHARACTERISTICS
 - 2-1 CONTACT CURRENT RATING : 5.0 AMPS
 - 2-2 CONTACT RESISTANCE : 30 MILLIOHMS MAX.
 - 2-3 DIELECTRIC WITHSTANDING VOLTAGE : 1000 V AC MIN.
 - 2-4 INSULATION RESISTANCE : 5000 MEGAOHMS MIN.
3. TEMPERATURE RATING : -55°C~+105°C



P/N	No. of Contact	A ±0.25 ±0.10	B ±0.13 ±0.005	C ±0.38 ±0.015	D ±0.25 ±0.010	E ±0.25 ±0.010
WLDBM0-094AA3188	09	16.90	25.00	30.80	37.10	39.60
WLDBM0-254AA3188	25	39.00	47.04	53.04	59.10	61.60

REV.	REVISION RECORD	DATE		GENERAL TOLERANCES		SCALE: 1:1	NAME	DATE	PART.NO: WLDBM0-XX4AA3188	DWG.NO: ENDE05	
AO	NEW RELEASE	22.10.28		LINEAR	ANGLES	APPROVED	Wang_jr	22.10.28			
			UNIT:mm	0.00±0.25	X°±3°	DESIGNER	Han_Gao	22.10.28	TITLE: DB 公头防水鲫鱼叉系列		
			SIZE: A4	0.000±0.10	X°X' ±2°	DRAWN	LanXuan_Hou	22.10.28			