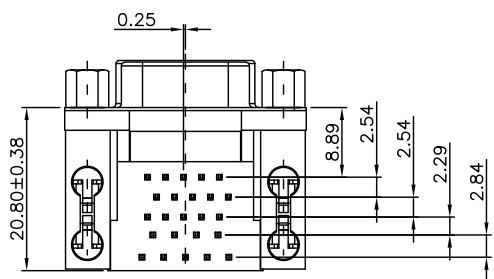
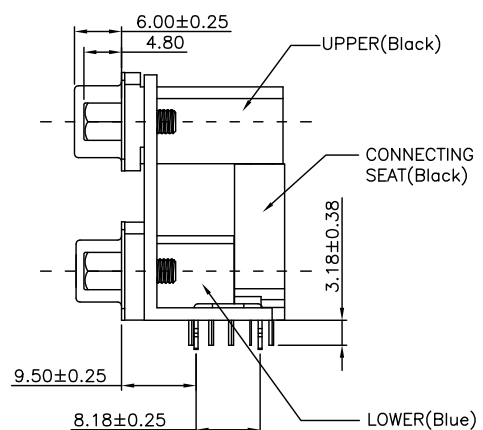
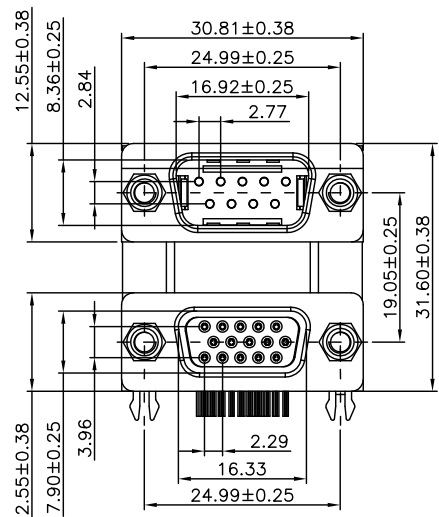


The product using material and processing must conform to the "WI-PZ-001"HSF technical standard control requirements

RoHS

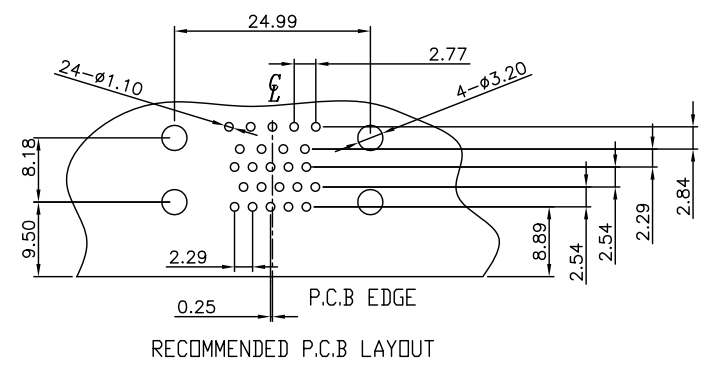


P / N :
W L D B M 9 - 2 4 1 1 A B 2 1 9

Plating Contact
1: Gold Flash

SCREW
A: NO SCREW
B: 4.8mm SCREW
C: 5.8mm SCREW

Housing color
A: UPPER-BLACK, LOWER-BLUE
B: UPPER-GREEN, LOWER-BLACK
C: UPPER-GREEN, LOWER-BLUE



- NOTE:
- MATERIAL SPECIFICATION:
 - HOUSING(UPPER):PBT+30%GF UL94V-0 BLACK
 - HOUSING(LOWER):PBT+30%GF UL94V-0 BLUE
 - HOUSING(CONNECTING SEAT):PBT+30%GF UL94V-0 BLACK
 - TERMINAL:COPPER ALLOY.
 - SHELL:SPCC
 - BOARDLOCK:COPPER ALLOY.
 - BRACKET:ZINC ALLOY.
 - SCREW:COPPER ALLOY
 - PLATING:
 - CONTACT:
 - GOLD PLATED OVER NICKEL AT CONTACT AREA.
 - TIN PLATED OVER NICKEL AT SOLDER AREAS.
 - SHELL: NICKEL PLATED OVERALL
 - BOARDLOCK: TIN PLATED OVERALL.
 - BRACKET: NICKEL PLATED OVERALL.
 - SCREW: NICKEL PLATED OVERALL.
 - MECHANICAL PERFORMANCE:
 - 1.9P MATING FORCE: 4.0KGF MAX.
 - 2.9P UNMATING FORCE: 1.0KGF MIN.
 - 3.15P MATING FORCE: 6.0KGF. MAX.
 - 4.15P UNMATING FORCE: 1.2KGF. MIN.
 - ELECTRICAL PERFORMANCE:
 - CURRENT RATING: 3A
 - VOLTAGE RATING: 250V MAX
 - CONTACT RESISTANCE: 25MΩ MAX.
 - INSULATION RESISTANCE: 5000MΩ MIN
 - DIELECTRIC WITHSTANDING VOLTAGE: 1000V AC MIN
 - ENVIRONMENTAL PERFORMANCE:
 - OPERATING TEMPERATURE: -55°C~+85°C.
 - P/N ORDER:

| Specification Type(1:2) | | |
|-------------------------|---|---|
| A | B | C |
| | | |

| REV. | REVISION RECORD | DATE |
|------|-----------------|----------|
| A0 | NEW RELEASE | 21.01.13 |

| GENERAL TOLERANCES | | SCALE: | NAME | DATE |
|--------------------|----------|----------|-------------|----------|
| LINEAR | ANGLES | 1:1 | Wang_jr | 21.01.13 |
| 0.0±0.35 | X°REF±6° | APPROVED | Ou_jian | 21.01.13 |
| 0.00±0.25 | X°±3° | DESIGNER | Hou-lanxuan | 21.01.13 |
| 0.000±0.10 | X°X'±2° | DRAWN | | |

| | |
|-----------------------------|---------|
| PART.NO: | DWG.NO: |
| WLDBM9-2411AB219 | ENDE05 |
| TITLE: | |
| D-SUB 9P/M+15P/F 8.89 19.05 | |



| | |
|---------|------------|
| REV: A0 | SHEET: 1/1 |
|---------|------------|