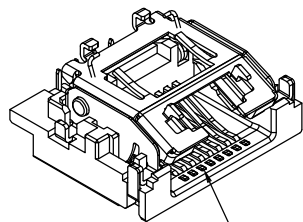
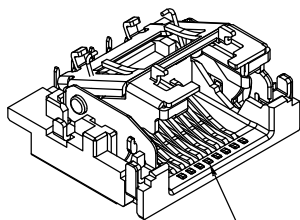
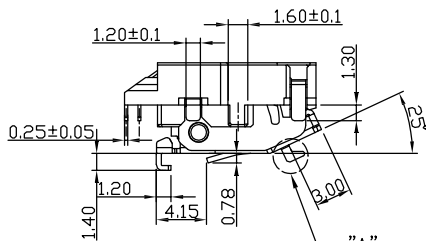


The product using material and processing must conform to the "WL-PZ-001"HSF technical standard control requirements

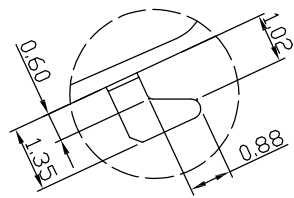
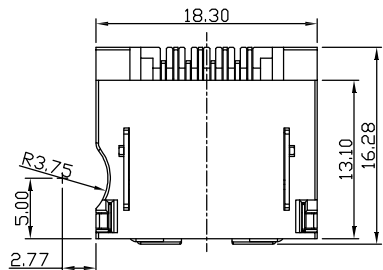
RoHS



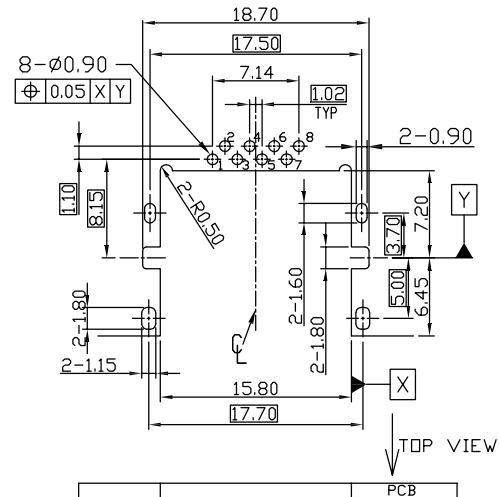
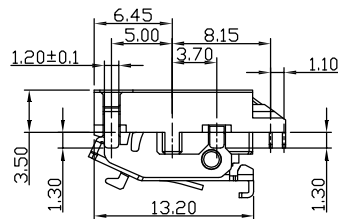
闭合状态



打开状态



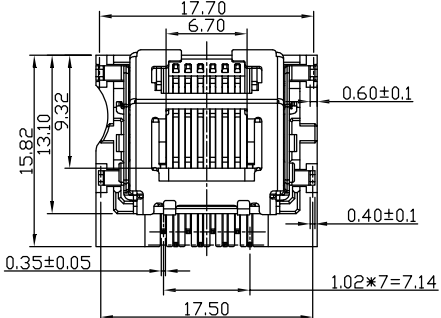
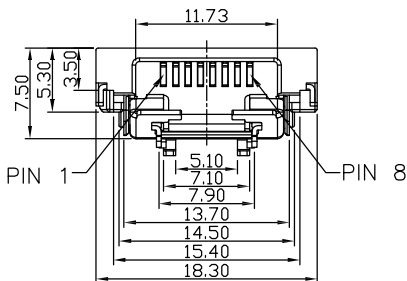
Detail "A" Scale:4:1



RECOMMENDED PCB LAYOUT

TOLERANCE:±0.05mm(TOP VIEW)

1. RECOMMENDED PCB THICKNESS: 1.20±0.05
2. PROCESSING TEMPERATURE SHOULD NOT EXCEED 260 CENTIGRADE



NOTE:
 MATERIAL&FLASH/PLATED:
 1.1 HOUSING:HIGH TEMP.THERMOPLASTIC WITH GLASS FIBRE,UL94V-0
 COLOR:BLACK(HALOGEN FREE)
 1.2 TERMINAL:PHOSPHOR BRONZE
 GOLD FLASH ON CONTACT AREA.
 80u"MIN.MATTE TIN ONSOLDER TAILS.
 50u"MIN.NICKEL UNDERPLATED OVER ALL
 1.3 ROTATE COVER:STAINLESS ALL.
 1.4 BRACKET:STAINLESS STEEL
 PLATED:50u"MIN.NICKEL PLATED OVER ALL.

P/N: WL R4 F 9-08 1 X A 0 060

CONNECTOR:
RJ45

MALE FEMALE:
F-FEMALE

ANGLE:
9-90°

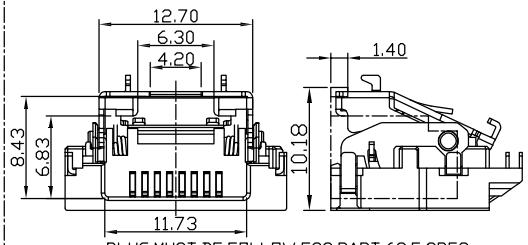
PIN Q' PY:
08-08PIN

COLOR:
A-BLACK

PLATING:
1-G/F
2-3u'
3-5u'

TERMIPOINT:
1-DIP

PLUG 机构配合相关尺寸示意图

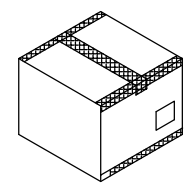
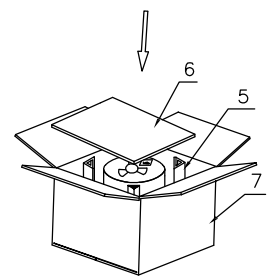
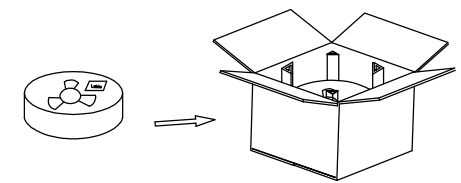
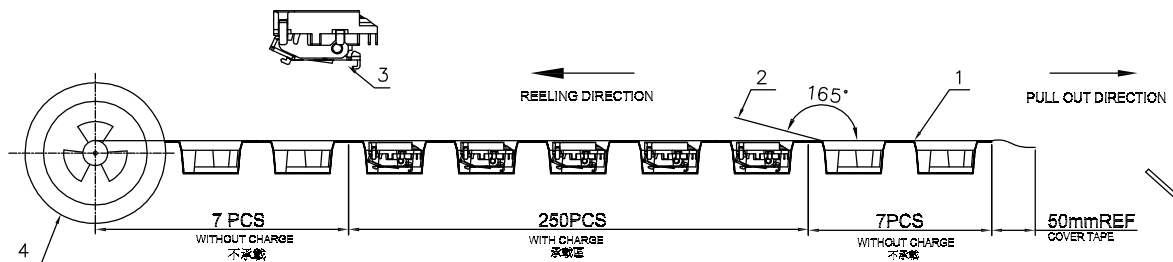


PLUG MUST BE FOLLOW FCC PART 68.5 SPEC

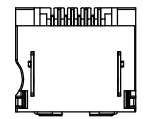
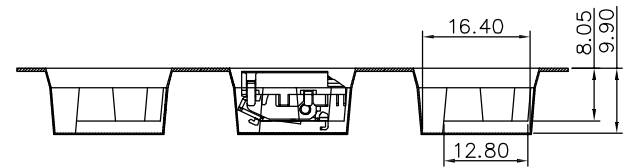
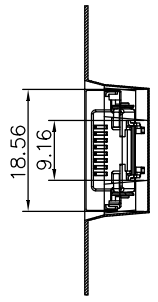
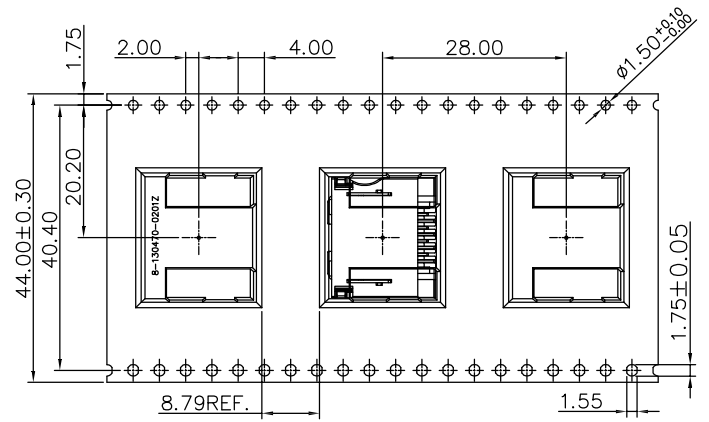
REV.	REVISION RECORD	DATE		GENERAL TOLERANCES		SCALE: 1:1	NAME	DATE	PART.NO:	DWG.NO:	
A0	NEW RELEASE	21.11.17		LINEAR	ANGLES	APPROVED	Wang_jr	21.11.17	WLR4F9-081XA0060	ENDE05	
			UNIT:mm	X'±3'	DESIGNER	Han_Gao	21.11.17	TITLE:			REV: A0 SHEET: 1/2
			SIZE: A4	0.000±0.10	X'X' ±2'	DRAWN	Zijun_Huang	21.11.17	半边RJ45沉板3.5 DIP		

The product using material and processing must conform to the "WL-PZ-001" HSF technical standard control requirements

RoHS



Note:
 1. 250pcs/Reel
 2. 6 Reel/Carton
 3. Total: 1500pcs.



NO.	NAME	DISCIPTION	Q.ty (pcs/carton)
1	CARRIER TAPE	W=44mm	
2	COVER TAPE	W=37.5mm	
3	RJ45	R/A DIP TYPE	1500
4	REEL	330*100*46.5	6
5	ARRIS PAPER	320*300*3	4
6	FROTH PLASTIC	334*334*10	2
7	CARTON	350*350*340mm	1

REV.	REVISION RECORD	DATE	GENERAL TOLERANCES	SCALE:	NAME	DATE	PART.NO:	DWG.NO:								
A0	NEW RELEASE	21.11.17	<table border="1"> <tr> <td>LINEAR</td> <td>ANGLES</td> </tr> <tr> <td>0.0±0.35</td> <td>X°REF±6'</td> </tr> <tr> <td>0.00±0.25</td> <td>X'±3'</td> </tr> <tr> <td>0.000±0.10</td> <td>X'X' ±2'</td> </tr> </table>	LINEAR	ANGLES	0.0±0.35	X°REF±6'	0.00±0.25	X'±3'	0.000±0.10	X'X' ±2'	1:1	Wang_jr	21.11.17	WLR4F9-081XA0060	ENDE05
LINEAR	ANGLES															
0.0±0.35	X°REF±6'															
0.00±0.25	X'±3'															
0.000±0.10	X'X' ±2'															
			UNIT:mm	APPROVED	Han_Gao	21.11.17	TITLE: 半边RJ45沉板3.5 DIP 包装图									
			SIZE: A4	DESIGNER	Zijun_Huang	21.11.17										

万连科技
 WanLian Teconology Co., Ltd

REV: A0 SHEET: 2/2