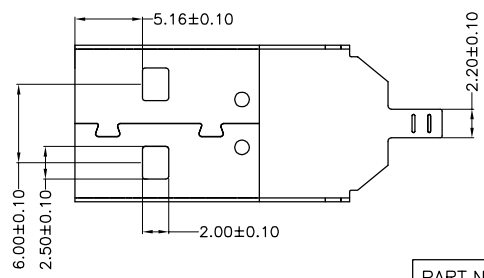
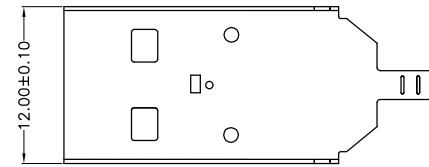
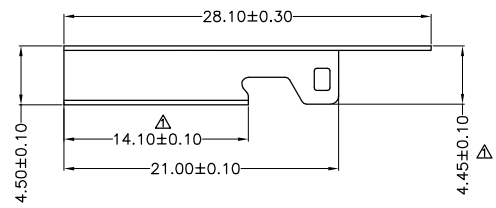


The product using material and processing must conform to the "WL-PZ-001"HSF technical standard control requirements

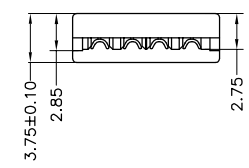
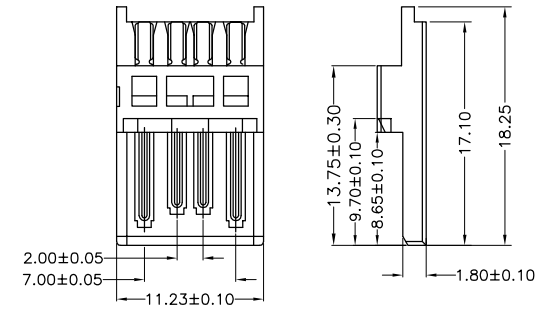
RoHS



PART.NO: WLU2M0-UN9275

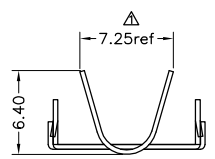
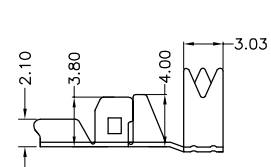
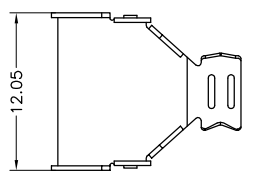
下盖

主体



PART.NO: WLU2M0-ZT1275

NOTE:
 1.MATERIAL SPECIFICATION:
 1-1.HOUSING:PBT UL94V-0 BLACK
 1-2.CONTACTS:COPPER ALLOY
 1-3.SHELL: SPCC
 2.PLATING SPECIFICATION:
 2-1.CONTACTS:
 AU PLATED ON CONTACT AREA
 TIN PLATED ON SOLDER AREA
 NICKEL UNDERPLATING OVER ALL
 2-2. SHELL:
 Ni UNDER PLATED OVER ALL.
 3.MECHANICAL PERFORMANCE:
 3-1.INSERTION FORCE: 3.57kgf MAX
 3-2.REMOVAL FORCE: 1.02kgf MIN
 4.ELECTRICAL PERFORMANCE:
 4-1.CURRENT RATING:1.5A
 4-2.VOLTAGE RATING:30V MAX
 4-3.CONTACT RESISTANCE: 30m Ohm MAX.
 4-4.INSULATION RESISTANCE: 1000MΩ MIN
 4-5.DIELECTRIC WITHSTANDING VOLTAGE: 100V AC MIN.
 5.ENVIRONMENTAL PERFORMANCE:
 OPERATING TEMPERATURE: -40°C~+85°C.



PART.NO: WLU2M0-UP9275

上盖

REV.	REVISION RECORD	DATE		GENERAL TOLERANCES		SCALE: 1:1	NAME	DATE	PART.NO:	DWG.NO:	
A0	NEW RELEASE	21.11.17		LINEAR	ANGLES	APPROVED	Wang_jr	23.05.05	WLU2M0-0441A1275	ENDE05	
A1	增加零件料号	23.04.26	UNIT:mm	0.0±0.35	X°REF±6'	DESIGNER	Ou_jian	23.05.05	TITLE: USB2.0 ATYPE PLUG L=28mm		
A2	变更尺寸 Δ	23.05.05		0.00±0.25	X°±3'	DRAWN	Hou_lanxuan	23.05.05			
			SIZE: A4	0.000±0.10	X°X' ±2'				REV: A2	SHEET: 1/1	