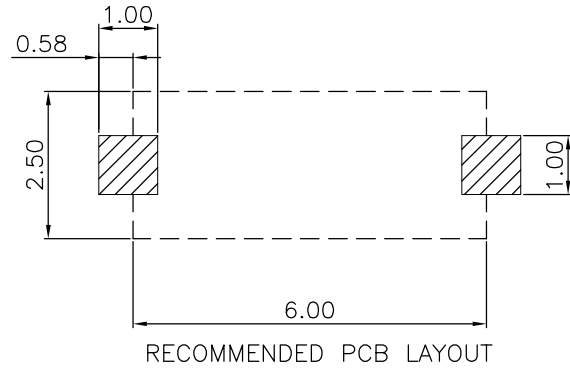
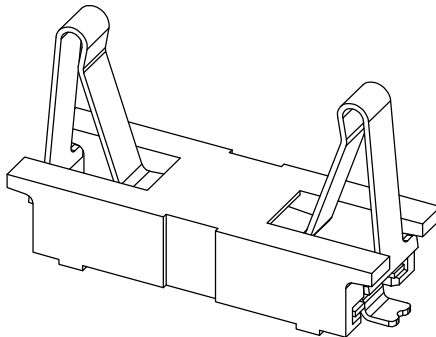
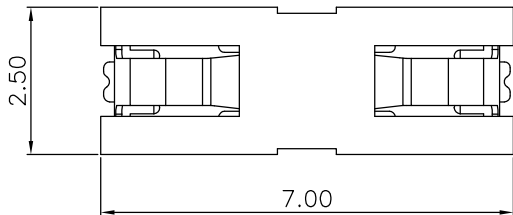


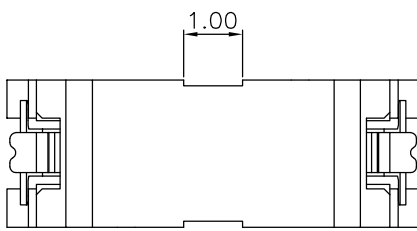
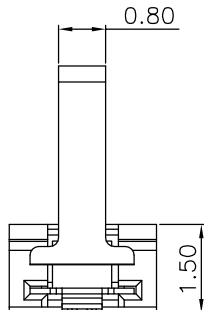
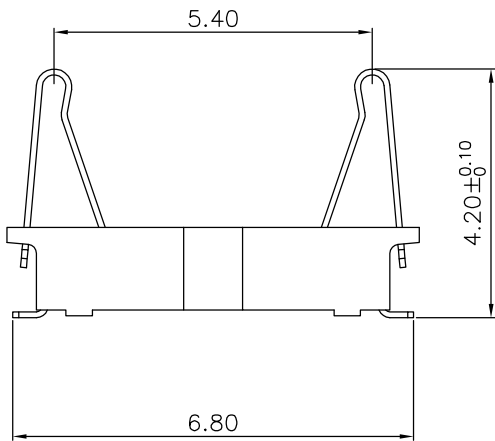
The product using material and processing must conform to the "WI-PZ-001"HSF technical standard control requirements

RoHS



RECOMMENDED PCB LAYOUT
TOLERANCE: ±0.05

- NOTE:
- MATERIAL SPECIFICATION:
 - 1-1.HOUSING:HIGH TEMPRATURE ,UL 94V-0
 - 1-2.CONTACTS:C5210.
 - PLATING SPECIFICATION:
 - 2-1.CONTACTS: Ni 50u" MIN. UNDER PLATED OVER ALL. Au PLATED ON THE FUNCTIONAL AREA OF CONTACT.
 - ELECTRICAL PERFORMANCE:
 - 3-1.CURRENT RATING:0.5A
 - 3-2.VOLTAGE RATING:30V MAX
 - 3-3.CONTACT RESISTANCE: 30m Ohm MAX.
 - 3-4.INSULATION RESISTANCE: 100MΩ MIN
 - 3-5.DIELECTRIC WITHSTANDING VOLTAGE: 500V AC MIN.
 - ENVIRONMENTAL PERFORMANCE:
 - OPERATING TEMPERATURE: -20°C~+85°C.



WLBTFO-02 2 X X 1 010
PLATING: COLOUR: K:White
1-G/F
2-AU 3U"
5-AU 15U"
6-AU 30U"

REV.	REVISION RECORD	DATE		GENERAL TOLERANCES		SCALE:	NAME	DATE	PART.NO:	DWG.NO:	
AO	NEW RELEASE	21.01.13		LINEAR	ANGLES	1:1					
			UNIT:mm	0.00±0.25	X'±3'		Ding_bo	21.01.13	WLBTFO-022XX1010		WanLian Teconology Co., Ltd
			SIZE: A4	0.000±0.10	X'X' ±2'		Ou_jian	21.01.13			