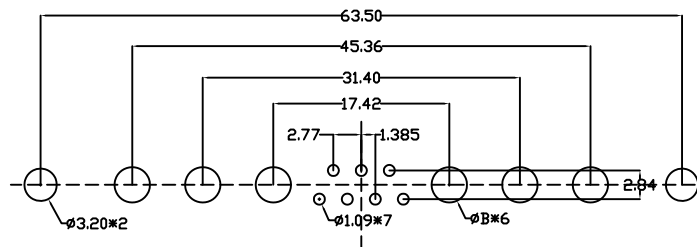
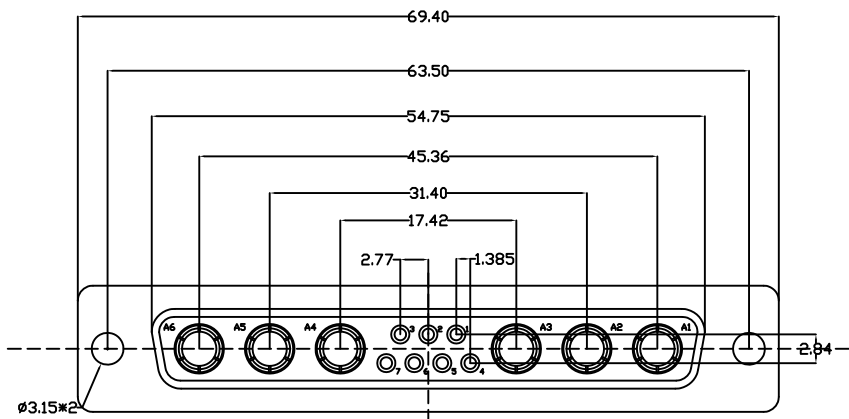


The product using material and processing must conform to the "WI-PZ-001"HSF technical standard control requirements

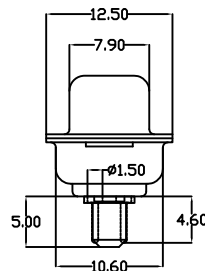
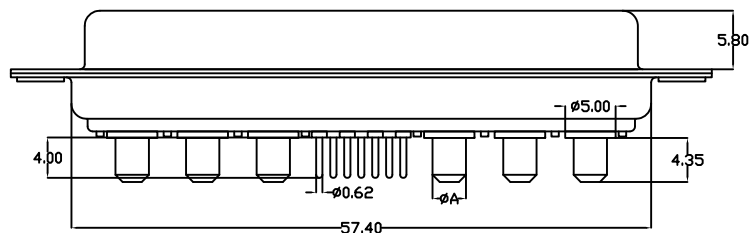
RoHS



P.C.B LAYOUT

NOTE:

- 1.MATERIAL SPECIFICATION:
 - 1-1.HOUSING:PBT FIBER 30% (UL94V-0)
 - 1-2.CONTACTS:BRASS
 - 1-3.SHELL: STAINLESS STEEL
 - 1-4.RIVET:COPPER ALLOY
- 2.PLATING SPECIFICATION:
 - 2-1.CONTACTS:
 - NI 40U" MIN. UNDER PLATED OVER ALL.
 - AU PLATED ON THE FUNCTIONAL AREA OF CONTACT.
 - 2-2. SHELL:
 - NI 30U" MIN. UNDER PLATED OVER ALL.
- 3.ELECTRICAL PERFORMANCE:
 - 4-1.CURRENT RATING:10A-40A
 - 4-2.VOLTAGE RATING:300V AC MAX
 - 4-3.CONTACT RESISTANCE: 30mΩ MAX.
 - 4-4.INSULATION RESISTANCE: 5000MΩ MIN
 - 4-5.DIELECTRIC WITHSTANDING VOLTAGE: 1000V AC MIN.
- 4.ENVIRONMENTAL PERFORMANCE:
 - OPERATING TEMPERATURE: -55°C~+105°C.



WLDBF0-131 X X X 079

PLATING:

- 1-G/F
- 2-AU 3U"
- 5-AU 15U"
- 6-AU 30U"

 RATED CURRENT:

- 1-10A
- 2-20A
- 3-30A
- 4-40A

 COLOUR:

- A:Black
- K:White

额定电流	∅A	PCB孔∅B
10A	∅1.80	∅2.00
20A	∅2.80	∅3.00
30A	∅3.30	∅3.50
40A	∅3.80	∅4.00

REV.	REVISION RECORD	DATE	GENERAL TOLERANCES		SCALE:	NAME	DATE	PART.NO:	DWG.NO:	 WanLian Teconology Co., Ltd
A0	NEW RELEASE	21.01.13	LINEAR	ANGLES	1:1	Wang_jr	21.01.13	WLDBF0-131XXX079	ENDE05	
			0.0±0.35	X'REF±6°	APPROVED	Ding_bo	21.01.13	TITLE:		REV: A0
			UNIT:mm	X'±3°	DESIGNER	Ou_jian	21.01.13	13W6 female 180°DIP		SHEET: 1/1
			SIZE: A4	0.000±0.10	DRAWN					