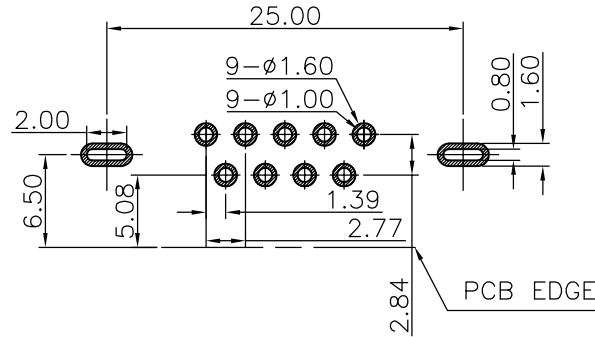
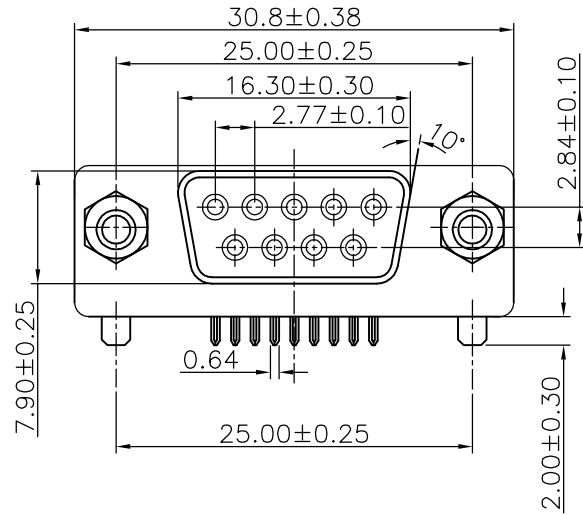
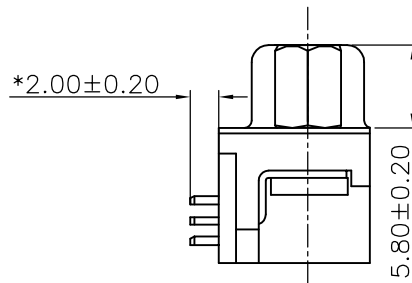
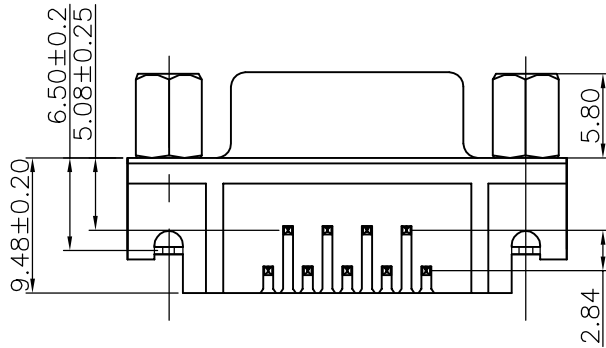


The product using material and processing must conform to the "WI-PZ-001"HSF technical standard control requirements

RoHS



PCB HOLES(THE TOP VIEW)  
NOTE:GENERAL TOLERANCE:±0.1mm



NOTE:

1.MATERIAL SPECIFICATION:

- 1-1.HOUSING: PA9T+30%GF UL94V-0 BLACK
- 1-2.TERMINAL: COPPER ALLOY
- 1-3.SHELL: SPCC
- 1-4.HARPOON: SPCC
- 1-5.SCREW:COPPER ALLOY

2.PLATING:

- 2-1.CONTACT:  
SELECTIVE GOLD PLATED ON CONTACT AREA  
80u" Min. TIN PLATED OVERALL  
50u" Min. NICKEL UNDER-PLATED
- 2-2.SHELL: 50u" Min. NICKEL PLATED OVERALL
- 2-3.HARPOON: TIN PLATED OVERALL
- 2-4.SCREW: NICKEL PLATED OVERALL

3.MECHANICAL PERFORMANCE:

- 3-1.MATING FORCE: 5.1Kg.Max.
- 3-2.UNMATING FORCE: 1.0~4.0Kg.

4.ELECTRICAL PERFORMANCE:

- 4-1.CURRENT RATING: 3A
- 4-2.VOLTAGE RATING: 250V MAX
- 4-3.CONTACT RESISTANCE: 25mΩ Max.
- 4-4.INSULATION RESISTANCE: 5000MΩ MIN
- 4-5.DIELECTRIC WITHSTANDING VOLTAGE: 1000V AC Min

5.ENVIRONMENTAL PERFORMANCE:

OPERATING TEMPERATURE: -25°C~+85°C.

6.P/N ORDER:

WLDBF9-09 1 X X 0 102

PLATING: 1-G/F      COLOUR: A-BLACK

REV.	REVISION RECORD	DATE	UNIT:mm	GENERAL TOLERANCES		SCALE:	NAME	DATE	PART.NO:	DWG.NO:	
A0	NEW RELEASE	21.01.13		LINEAR	ANGLES	1:1					
			0.00±0.25	X'±3'	APPROVED	Wang_jr	21.01.13	WLDBF9-091XX0102	ENDE05		
			0.00±0.10	X'X' ±2'	DESIGNER	Han_Gao	21.01.13	TITLE:			
			SIZE: A4		DRAWN	Zijun_Huang	21.01.13	DR5.08 9F 90°DIP			

REV: A0      SHEET: 1/1