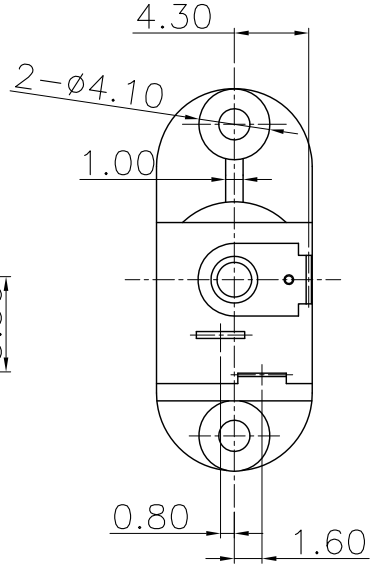
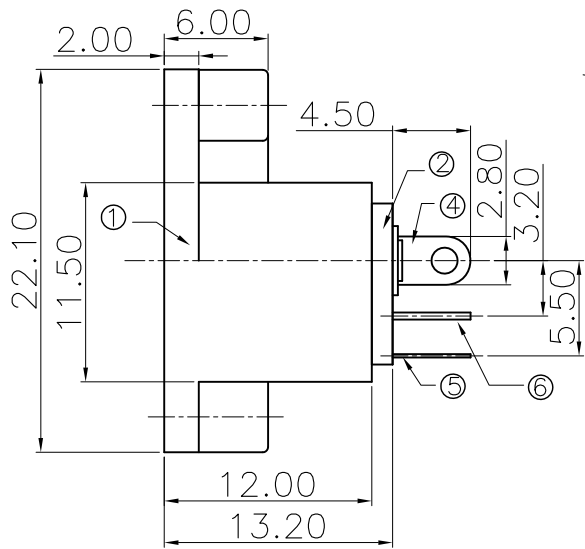
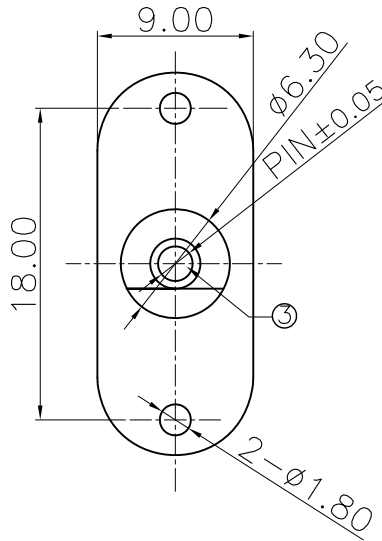


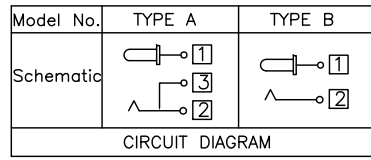
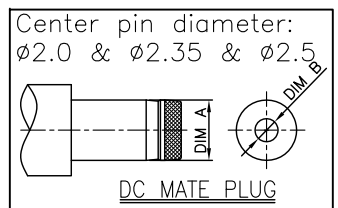
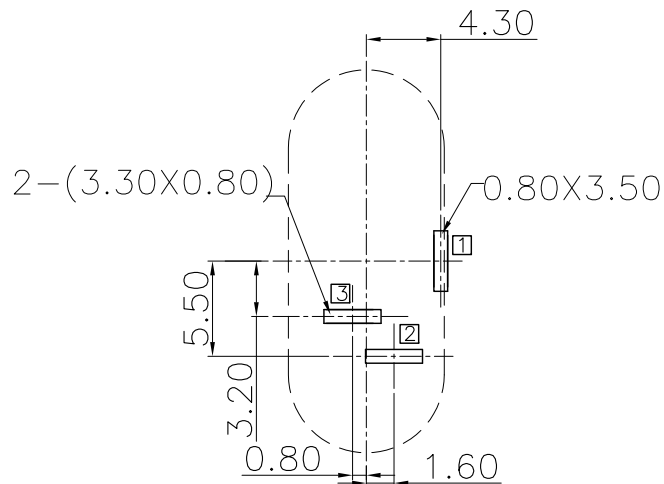
The product using material and processing must conform to the "WI-PZ-001" HSF technical standard control requirements

RoHS



- NOTE:
- MATERIAL SPECIFICATION:
 - 1-HOUSING:THERMOPLASTIC
 - 2.COVER:THERMOPLASTIC
 - 3.CENTER PIN:BRASS
 - 4.TERMINAL 1:BRASS
 - 5.TERMINAL 2:MN STEEL
 - 6.TERMINAL 3:BRASS
 - PLATING SPECIFICATION:
 - 2-1.CENTER PIN:
NI PLATING ON CONTACT AREA.
 - 2-2.TERMINAL 4/5/6:
TIN PLATING ON CONTACT AREA.
 - MECHANICAL PERFORMANCE:
 - 3-1.INSERTION AND EXTRACTION FORCE:3N~30N
 - 3-3.DURABILITY: 5000 CYCLES.
 - ELECTRICAL PERFORMANCE:
 - 4-1.RATED CURRENT:3A
 - 4-2.NOMINAL VOLTAGE:20V
 - 4-3.CONTACT RESISTANCE: 50mΩ MAX
AFTER TEST: 100mΩ MAX
 - 4-4.INSULATION RESISTANCE: 100MΩ MIN
AFTER TEST: 50MΩ MIN
 - 4-5.WITHSTANDING VOLTAGE: 500V AC
 - OPERATION TEMPERATURE RANGE:-20°C~70°C
PRESERVATIVE TEMPERATURE RANGE:-40°C~85°C
 - P/N: WLDCF0-03 X 1 X X 032

PLATED:	1.G/F	7.SN	8.AC	CIRCUIT DIAGRAM:
HOUSING:	1.PBT BLACK			CENTER PIN:
				1.ø2.0
				2.ø2.35
				3.ø2.5



□ : TERMINAL NO.

PIN	ø2.0	ø2.35	ø2.5
DIM A	ø5.5±0.05	ø5.5±0.05	ø5.5±0.05
DIM B	ø2.05 ^{+0.10} _{-0.10}	ø2.40 ^{+0.10} _{-0.10}	ø2.55 ^{+0.10} _{-0.10}

RECOMMENDED P.C.B. LAYOUT
UNSPECIFIED TOLERANCE:±0.05
(BOTTOM VIEW)

REV.	REVISION RECORD	DATE	GENERAL TOLERANCES		SCALE:	NAME	DATE	PART.NO:	DWG.NO:	 WanLian Teconology Co., Ltd
A0	NEW RELEASE	21.01.13	LINEAR	ANGLES	1:1	Wang_jr	21.01.13	WLDCF0-03X1XX032	ENDE05	
			0.0±0.35	X'REF±6°	APPROVED	Han_Gao	21.01.13	TITLE:	REV: A0	
			0.00±0.25	X'±3°	DESIGNER	Zijun_Huang	21.01.13	DC POWER JACK	SHEET: 1/1	
			UNIT:mm	0.00±0.10	X'X' ±2°	DRAWN				