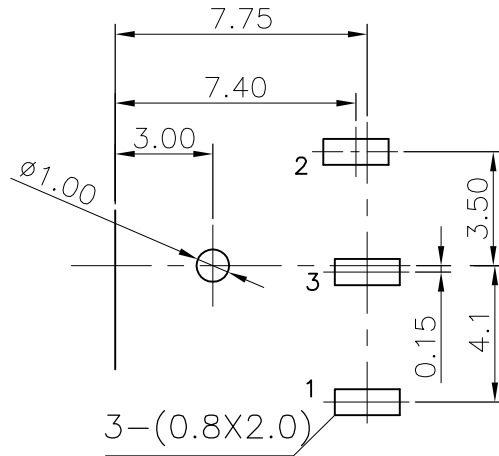
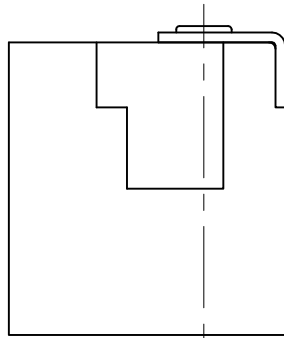
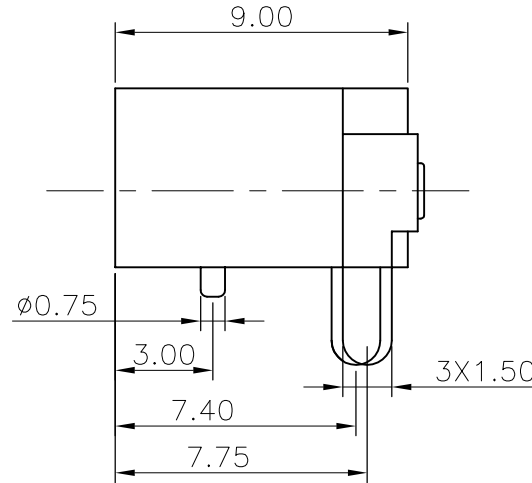
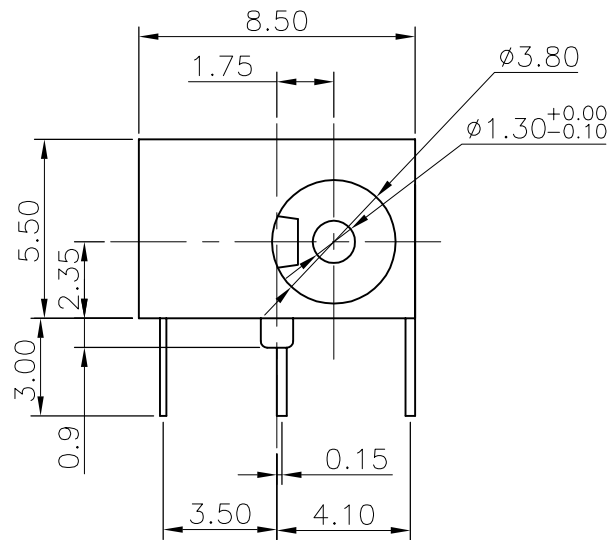


The product using material and processing must conform to the "WL-PZ-001"HSF technical standard control requirements

RoHS



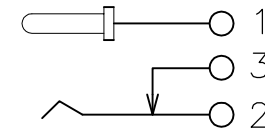
PCB LAYOUT TOP VIEW



NOTE:

- 1.MATERIAL SPECIFICATION:
 - 1-1.TERMINAL 1:BRASS T=0.30mm
 - 1-2.TERMINAL 2:PHOSPHOR BRONZE T=0.20mm
 - 1-3.TERMINAL 3:BRASS T=0.30mm
 - 1-4.PIN:H62 BRASS
 - 1-5.HOUSING:PBT COLOUR:BLACK
- 2.PLATING SPECIFICATION:
 - 2-1.TERMINAL 1/2/3: AG-PLATED ON CONTACT AREA.
 - 2-2.PIN: CUSN-PLATED ON CONTACT AREA.
- 3.MECHANICAL PERFORMANCE:
 - 3-1.INSERTION AND EXTRACTION FORCE:3N~30N
 - 3-3.LIFE TEST: 5000 CYCLES MIN.
- 4.ELECTRICAL PERFORMANCE:
 - 4-1.RATING CURRENT:0.5A DC
 - 4-2.RATING VOLTAGE:30V DC
 - 4-3.CONTACT RESISTANCE: 50mΩ MAX;
AFFER TEST 100mΩ MAX
 - 4-4.INSULATION RESISTANCE:100MΩ MIN
AFFER TEST 50MΩ MIN
 - 4-5.WITHSTANDING VOLTAGE: 500V AC
- 5.OPERATION TEMPERATURE RANGE:-20°C~+70°C
- 6.PRESERVATIVE TEMPERATURE RANGE:-20°C~85°C
- 7.P/N:

WLDCF9-03 X 1 1 0 056
 PLATED: 1.G/F HOUSING: 1.PBT BLACK
 7.SN
 8.AG



CIRCUIT DIAGRAM

REV.	REVISION RECORD	DATE	UNIT:mm	GENERAL TOLERANCES		SCALE:	NAME	DATE	PART.NO:	DWG.NO:	
AO	NEW RELEASE	21.01.13		LINEAR	ANGLES	1:1					
			0.00±0.25	X'±3'	DESIGNER	Han_Gao	21.01.13	TITLE:			
			0.000±0.10	X'X' ±2'	DRAWN	Zijun_Huang	21.01.13	DC JACK			
			SIZE: A4								REV: A0 SHEET: 1/1