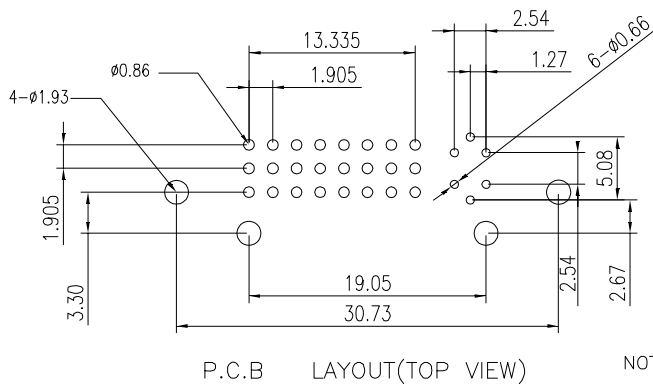
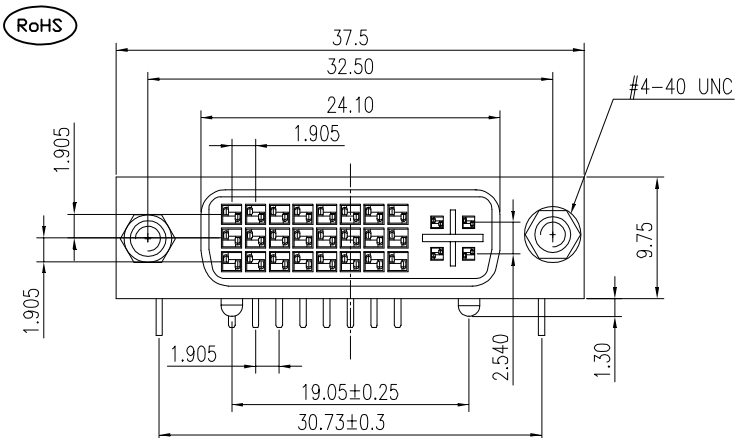


The product using material and processing must conform to the "WI-PZ-001" HSF technical standard control requirements



NOTE:

BODY: PBT+30%GF
SPACER: PA66+30%GF
CONTACTS: COPPER ALLOY
CONTACT : COPPER ALLOY
CONTACT : UNDER PLATED 50u"MIN NICKEL,
OVER ALL 120u" MIN TIN IN SOLDERING AREA,
SELECTIVE GOLD PLATED IN CONTACT AREA.
SHIELD : SPCC T=0.5
SHIELD : NICKEL PLATED WITH 120u"THICK.
OVER 100u" THICKNESS Cu.
BOARD LOCK:SPCC ,Tin PLATED.
RIVET : COPPER ALLOY , NICKEL PLATED.
SCREW : Fe,NICKEL PLATED.

*MECHANICAL

MATING FORCE: 4.5 KG MAX. 25 MM/MINUTE
UNMATING FORCE: 1.0-4.0 KG MIN.
DURABILITY: 100 MATING CYCLES

*ELECTRICAL SPECIFICATION

INSULATION RESISTANCE: 1000 MEGOHMS MIN
DIELECTRIC WITHSTANDING VOLTAGE: 500V AC RMS±50V.60 HZ
CURRENT RATING: 1.5 AMPERES MIN

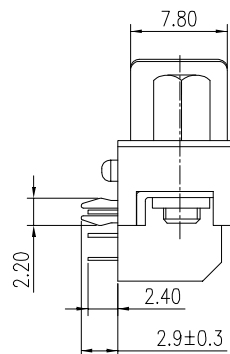
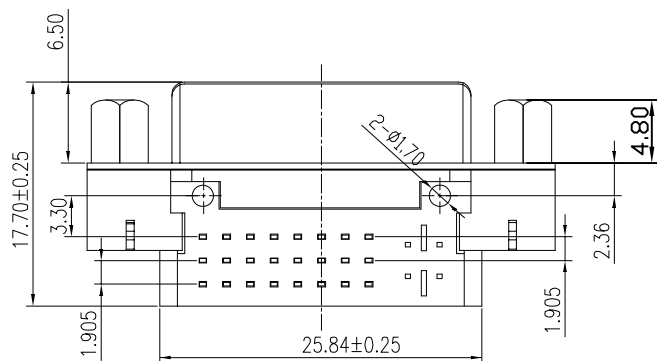
*ENVIRONMENTAL

OPERATING TEMPERATURE: -20℃ to 85℃

P/N: WLDVF9-29 1 X X 0 028

PLATING:
1-G/F
2-AU 3U"
7-Sn

COLOUR:
A-BLACK
W-WHITE
E-YELLOW
G-BLUE



REV.	REVISION RECORD	DATE		GENERAL TOLERANCES		SCALE: 1:1	NAME	DATE	PART.NO:	DWG.NO:	 WanLian Teconology Co., Ltd		
A0	NEW RELEASE	21.01.13		LINEAR	ANGLES	APPROVED	Wang_jr	21.01.13	WLDVF9-291XX0028	ENDE05			
				0.0±0.35	X°REF±6°								
				UNIT: mm	0.00±0.25							X°±3°	
				SIZE: A4	0.000±0.10							X°X'±2°	DRAWN
											REV: A0	SHEET: 1/1	