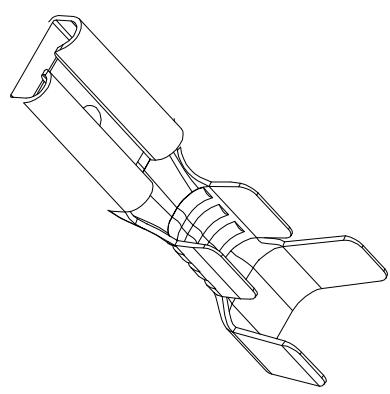
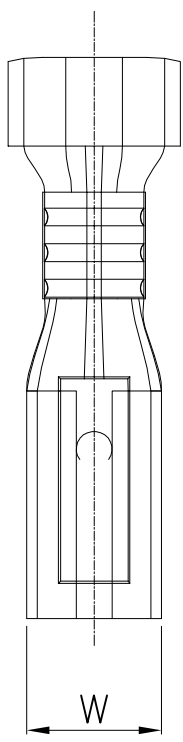
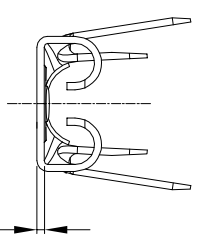
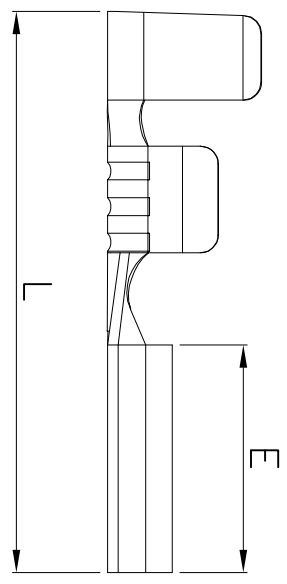


The product using material and processing must conform to the "WL-PZ-001"HSF technical standard control requirements

RoHS



- 备注:
1. 接压线径: AWG16-18#
  2. 拔力范围:  $\geq 3.0\text{Kg}$  插力范围:  $\leq 3.0\text{Kg}$
  3. 对插端子: 110公端/T=0.5
  4. 表面处理: 铜镀锡
  5. 材料: C2680 (EH)
  6. 包装数量: 15000PCS

Item NO.料号	规格		mm/inch主要尺寸		
	料厚(mm)	公片厚度	W±0.1	E±0.1	L±0.2
WLLG2F0-A12030A01	0.25	TAB=0.5	3.8	6.3	15.6
WLLG2F0-A12030A02	0.25	TAB=0.8	3.8	6.3	15.6

REV.	REVISION RECORD	DATE	GENERAL TOLERANCES		SCALE:	NAME	DATE	PART NO:	DWG. NO:	mm/inch主要尺寸		
A0	NEW RELEASE	21.11.17	LINEAR	ANGLES	1:1	Wang_jr	21.11.17	WLLG2F0-A12030XXX	ENDE05	W	E	L
			0.0±0.35	X°REF±6°		Han_Gao	21.11.17	TITLE:		REV:	A0	SHEET: 1/1
			UNIT:mm	X'±3°		Zijun_Huang	21.11.17	无绝缘110系列母插片连续端子 接压线径:AWG16-18#		REV:	A0	SHEET: 1/1
			SIZE: A4	X'X' ±2°								

