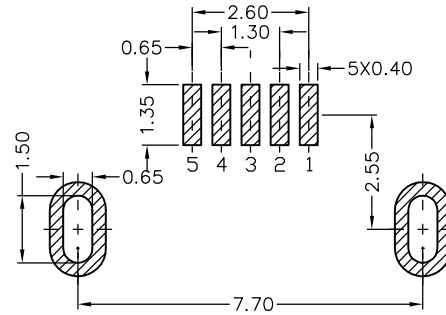
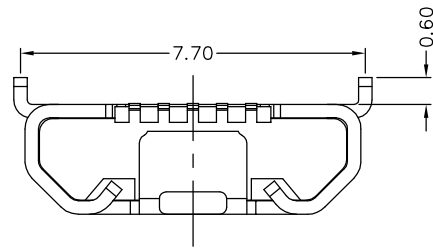
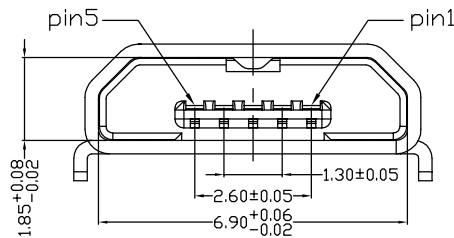
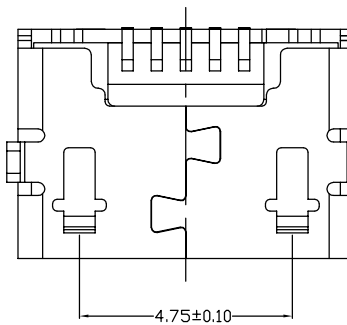
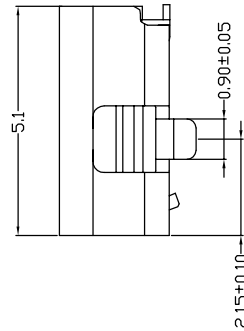
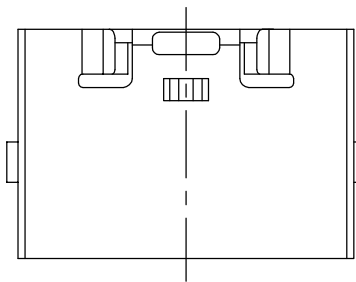


The product using material and processing must conform to the "WL-PZ-001"HSF technical standard control requirements

RoHS



PCB LAYOUT



NOTE:

- 1.MATERIAL SPECIFICATION:
  - 1-1.HOUSING:LCP BLACK UL94V-0
  - 1-2.CONTACTS:COPPER ALLOY.
  - 1-3.SHELL: STAINLESS STEEL.
- 2.PLATING SPECIFICATION:
  - 2-1.CONTACTS: NICKEL ALL OVER  
GOLD FLASH IN CONTACT  
TIN IN SOLDER AREA.
  - 2-2. SHELL: NI OR SN UNDER PLATED OVER ALL.
- 3.MECHANICAL PERFORMANCE:
  - 3-1.INSERTION FORCE: 3.57kgf MAX
  - 3-2.REMOVAL FORCE: 0.8kgf MIN
  - 3-3.DURABILITY: 10000 CYCLES.
- 4.ELECTRICAL PERFORMANCE:
  - 4-1.CURRENT RATING:1.5A
  - 4-2.VOLTAGE RATING:5V MAX
  - 4-3.CONTACT RESISTANCE: 30m Ohm MAX.
  - 4-4.INSULATION RESISTANCE: 100MΩ MIN
  - 4-5.DIELECTRIC WITHSTANDING VOLTAGE: 100V AC MIN
- 5.ENVIRONMENTAL PERFORMANCE:
  - OPERATING TEMPERATURE: -30°C~+85°C.
- 6.PACKAGE SPEC: REEL

PART NO.:

WLM2F9-05 2 X X X 072

PLATING:	1-G/F	2-Au 3u"	5-Au 15u"	6-Au 30u"	SHELL:	7-SN	9-NI
					COLOUR:	A-BLACK	

REV.	REVISION RECORD	DATE	UNIT:mm	GENERAL TOLERANCES		SCALE:	NAME	DATE	PART.NO:	DWG.NO:	WanLian Teconology Co., Ltd
A0	NEW RELEASE	21.01.13		0.00±0.25	X'±3'	1:1	Wang_jr	21.01.13	WLM2F9-052XXX072	ENDE05	
			0.00±0.10	X'X'±2'		DESIGNER	Han_Gao	21.01.13	TITLE:		REV: A0
						DRAWN	Zijun_Huang	21.01.13	MICRO 5P/F B 反向两脚DIP 7.7(0.6*0.9)无边无柱		

