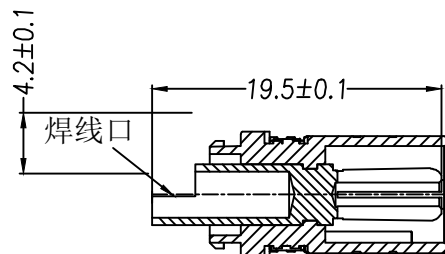
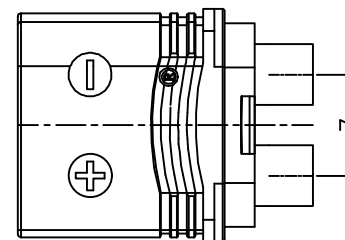
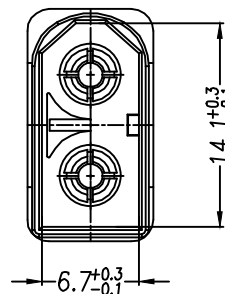
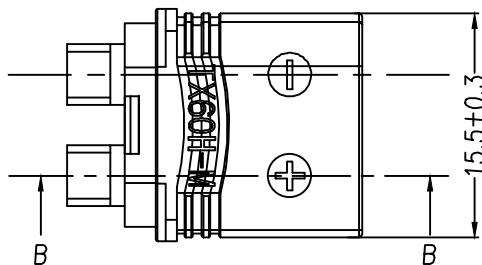
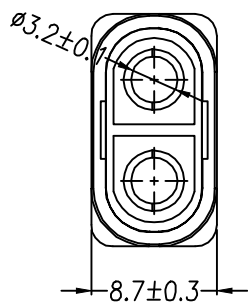
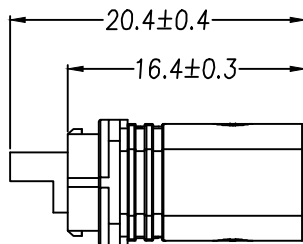


The product using material and processing must conform to the "WI-PZ-001"HSF technical standard control requirements

RoHS



SECTION B-B

说明:

与对应母插头实配:
 产品型号: X60H-M母壳公端黑色
 瞬间电流: 30A
 额定电流: 15A
 额定电压: DC500V
 接触电阻: 0.55mΩ
 绝缘材质: PA端子材质: 铜镀金
 工作温度: -20℃~120℃
 防火等级: UL94V0
 包装方式: 袋装

C					
B		TX60H-M 母胶壳	PA+15GF V0	1Pcs	黄色
A	BP3680-A	3.5公头 4.2*20镀金	H59黄铜	2Pcs	镀金
序号 NO.	材料编号 MATERIALNO.	规格描述 PRODUCTNAME	材料 MATERIAL	数量 QUANTITY	备注 REMARKS

REV.	REVISION RECORD	DATE		GENERAL TOLERANCES		SCALE: 1:1	NAME	DATE	PART.NO: WLP3532-A	DWG.NO: ENDE05		
A0	NEW RELEASE	21.12.29		LINEAR	ANGLES	APPROVED	Ximei_Yang	21.12.29				
			UNIT:mm	0.0±0.35	X'REF±6°	DESIGNER	Han_Gao	21.12.29	TITLE: TX60H-M 母壳公端黑色		REV: A0	SHEET: 1/1
			SIZE: A4	0.00±0.25	X'±3°	DRAWN	Zhonghao_Che	21.12.29				