

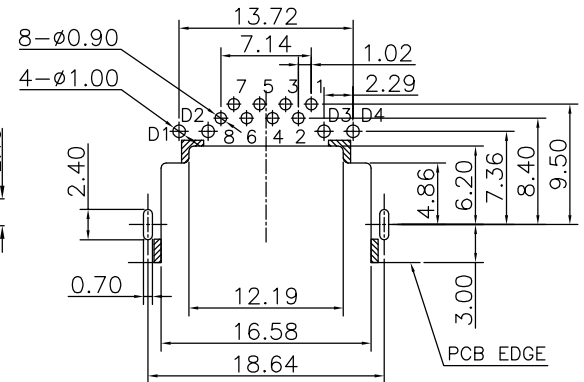
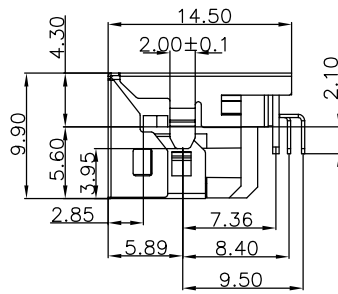
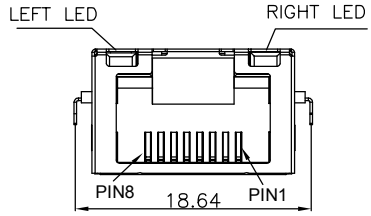
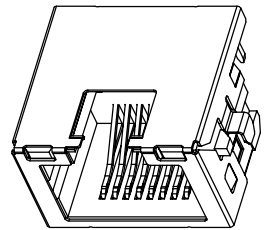
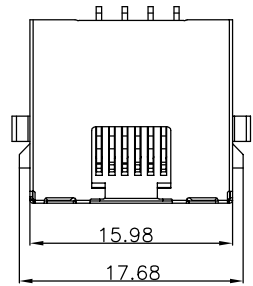
The product using material and processing must conform to the "WL-PZ-001"HSF technical standard control requirements

RoHS

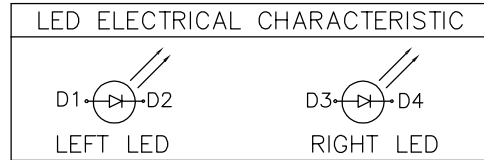
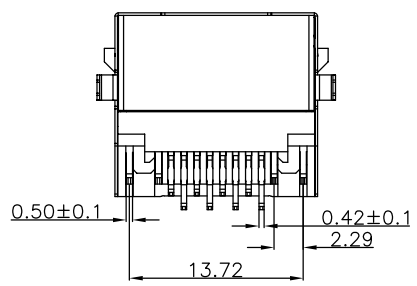
NOTE:  
 1.MATERIAL SPECIFICATION:  
 1-1.HOUSING: LCP UL94V-0  
 1-2.SHELL: SUS 0.20mm  
 1-3.CONTACT: COPPER ALLOY T=0.25MM  
 1-4.BOTTOM SHELL: STS T=0.15MM  
 2.PLATING SPECIFICATION:  
 G/F PLATING OVER NI  
 100u"SN PLATED ON SOLDER TALL AREA  
 50u"NI UNDER PLATED OVER ALL  
 2-1.SHELL:  
 Ni 30u" MIN PLATING OVER ALL  
 3.MECHANICAL PERFORMANCE:  
 3-1.INSERTION FORCE: 22N MAX  
 3-2.REMOVAL FORCE: 22N MAX  
 3-2.DURABILITY: 750 CYCLES MIN.  
 4.ELECTRICAL PERFORMANCE:  
 4-1.CURRENT RATING:1.5A  
 4-2.VOLTAGE RATING:125V MAX  
 4-3.CONTACT RESISTANCE: 40mΩ Max.  
 4-4.INSULATION RESISTANCE: 500MΩ MIN  
 4-5.DIELECTRIC WITHSTANDING VOLTAGE:  
 500V AC Min  
 5.ENVIRONMENTAL PERFORMANCE:  
 OPERATING TEMPERATURE: -40°C~+85°C.  
 6.PACKAGE SPEC:TRAY

P/N:  
 WLR4F9-08 8 X X X 027

PLATING:  
 1-G/F  
 2-Au 3u"  
 3-Au 6u"  
 5-Au 15u"  
 6-Au 30u"  
 COLOUR:  
 A-BLACK  
 LED:  
 1-LEFT:YELLOW  
 RIGHT:GREEN  
 2-LEFT:GREEN  
 RIGHT:YELLOW  
 3-LEFT:AMBER  
 RIGHT:GREEN  
 4-LEFT:GREEN  
 RIGHT:AMBER



MMENDED PCB LAYOUT  
 =1.6MM,TOL:±0.05



REV.	REVISION RECORD	DATE	UNIT:mm	GENERAL TOLERANCES		SCALE: 1:1	NAME	DATE	PART.NO:	DWG.NO:	 WanLian Teconology Co., Ltd
A0	NEW RELEASE	21.01.13		LINEAR	ANGLES	APPROVED	Wang_jr	21.01.13	WLR4F9-088XXX027	ENDE05	
			0.00±0.25	X'±3°	DESIGNER	Han_Gao	21.01.13	TITLE: RJ45 8P8C DIP沉板式4.3MM LED		REV: A0	SHEET: 1/1
			SIZE: A4	0.000±0.10	X'X' ±2°	DRAWN	Zijun_Huang	21.01.13			