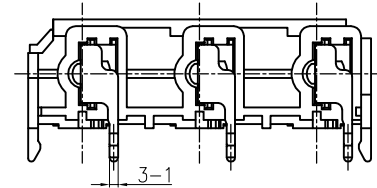
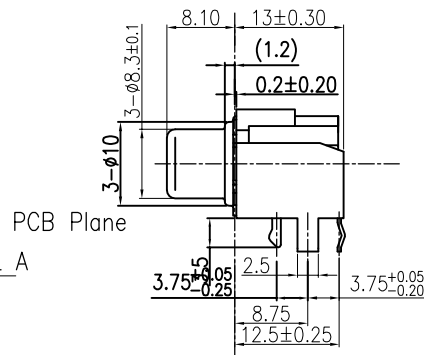
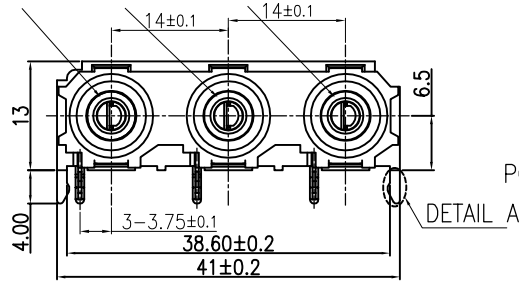


The product using material and processing must conform to the "WI-PZ-001"HSF technical standard control requirements

RoHS

黄色 白色 红色



Reference plane

NOTE:

1. MATERIAL:

- 1.1 INSULATOR: PBT+30%GF, COLOR:BLACK
- 1.2 WASHER: PBT+30%GF, COLOR LAYOUT
- 1.2 CONTACT : BRASS T=0.4
- 1.3 SHELL: STEEL T=0.4

2. PLATING:

- 2.1 CONTACT: Cu=1-3um,Ni=1-3um,Sn=3-8um
- 2.2 SHELL: Cu=3-5um,Ni=1-3um

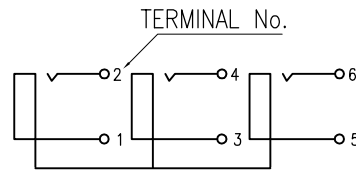
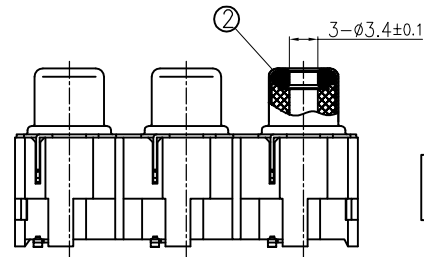
3. CHARACTERISTICS:

- 3.1 ELECTRICAL CHARACTERISTICS;
- NOMINAL VOLTAGE:250V
- CONTACT RESISTANCE:30mΩ MAX
- DIELECTRIC WITHSTANDING VOLTAGE:500 V R.M.S.
- INSULATION RESISTANCE 100 MΩ MIN
- OPERATING TEMPERATURE:-25? ~ +85?
- SOLDERING TEMPERATURE:250? MAX

4.P/N ORDER:

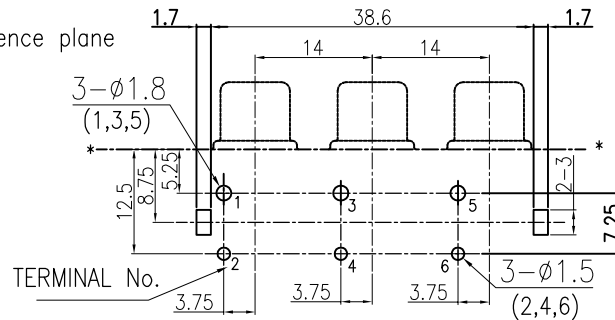
WLRCF9-06 1 X X 0 001

PLATING: 7-Sn COLOUR: A-BLACK



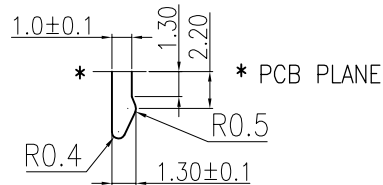
SCHEMATIC

Reference plane



PCB HOLES (BOTTOM VIEW) t=1.6mm

NOTE:GENERAL TOLERANCE:±0.1mm



DETAIL A SCALE 2:1

Y L W H R D YL: YELLOW WH: WHITE RD: RED

COLOR LAYOUT

REV.	REVISION RECORD	DATE		GENERAL TOLERANCES		SCALE: 1:1	NAME	DATE	PART.NO: WLRCF9-061XX001	DWG.NO: ENDE05	
AO	NEW RELEASE	21.01.13		LINEAR	ANGLES	APPROVED	Wang_jr	21.01.13			
			0.0±0.35	X°REF±6°	DESIGNER	Han_Gao	21.01.13	TITLE: RCA Triplets 90°DIP PBT black iron nickel plated non-perforated full mist tin (gasket color: pin down left yellow, middle white, right red)94HB			
			0.00±0.25	X°±3°	DRAWN	Zijun_Huang	21.01.13				
			UNIT:mm	0.00±0.10	X°X'±2°				REV: A0	SHEET: 1/1	