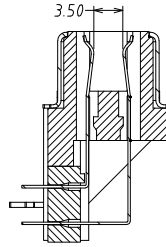
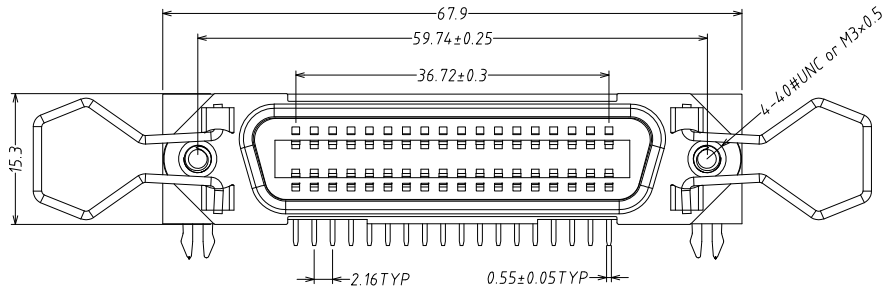
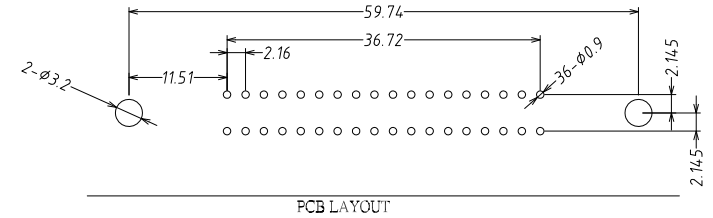


The product using material and processing must conform to the "WI-PZ-001" HSF technical standard control requirements

RoHS



剖面 A-A



PCB LAYOUT

NOTE:

1.MATERIAL SPECIFICATION:

- 1-1.HOUSING:PBT FIBER 30% (UL94V-0)
- 1-2.CONTACTS:BRASS
- 1-3.SHELL: STAINLESS STEEL.
- 1-4.CARD HOOK:STAINLESS STEEL

2.PLATING SPECIFICATION: 2-1.CONTACTS:

- NI 40U" MIN. UNDER PLATED OVER ALL.
- AU PLATED ON THE FUNCTIONAL AREA OF CONTACT.

2-2. SHELL:

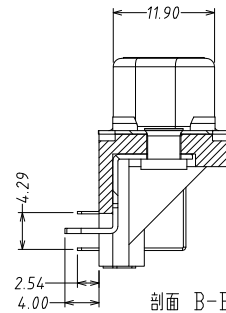
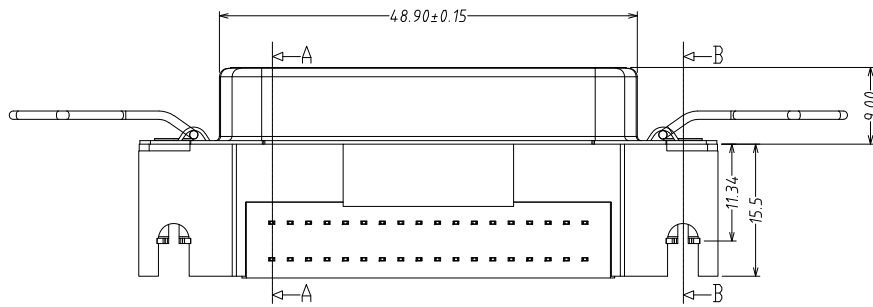
- NI 30U" MIN. UNDER PLATED OVER ALL.

3.ELECTRICAL PERFORMANCE:

- 3-1.CURRENT RATING:1.5A
- 3-2.VOLTAGE RATING:300V AC
- 3-3.CONTACT RESISTANCE: 30mΩ MAX.
- 3-4.INSULATION RESISTANCE: 1000MΩ MIN
- 3-5.DIELECTRIC WITHSTANDING VOLTAGE: 500V AC MIN.

4.ENVIRONMENTAL PERFORMANCE:

- OPERATING TEMPERATURE: -55°C~+105°C.



剖面 B-B

WLSCF9-36 1 X X 0001

- PLATING: 1-G/F, 2-AU 3U", 5-AU 15U", 6-AU 30U"
- COLOUR: A:Black, K:White

REV.	REVISION RECORD	DATE		GENERAL TOLERANCES		SCALE: 1:1	NAME	DATE	PART.NO:	DWG.NO:	
A0	NEW RELEASE	21.01.13		LINEAR	ANGLES	APPROVED	Wang_jr	21.01.13	WLSCF9-361XX0001	ENDE05	
			UNIT:mm	0.00±0.25	X'±3°	DESIGNER	Ding_bo	21.01.13	TITLE:		REV: A0 SHEET: 1/1
			SIZE: A4	0.000±0.10	X'X' ±2°	DRAWN	Ou_jian	21.01.13	SCSI 36PIN 90°DIP		

WanLian Teconology Co., Ltd

REV: A0 SHEET: 1/1