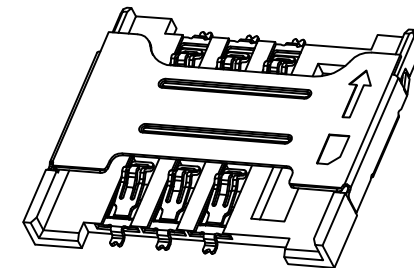
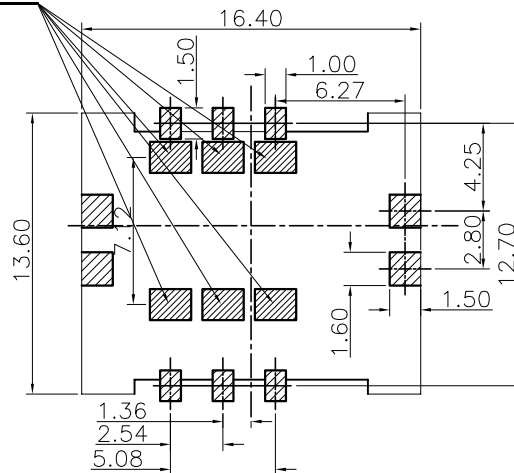
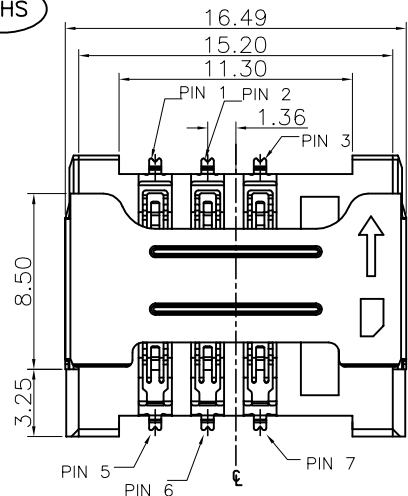


The product using material and processing must conform to the "WI-PZ-001"HSF technical standard control requirements

禁布区域: 此区域内为端子头部下压区域, 区域内不可有任何线路及钢箔 (至少避开两层板)

RoHS



RECOMMENDED PCB LAYOUT
TOLERANCE: ±0.05

- 1.ELECTRICAL PERFORMANCE:
 1-1.CURRENT RATING:0.5A
 1-2.VOLTAGE RATING:30V MAX
 1-3.CONTACT RESISTANCE: 50m Ohm MAX.
 1-4.INSULATION RESISTANCE: 100MΩ MIN 100V DC
 1-5.DIELECTRIC WITHSTANDING VOLTAGE: 100V AC MIN.
 2.ENVIRONMENTAL PERFORMANCE:
 OPERATING TEMPERATURE: -20°C~+85°C.

WLSMF9-06 2 X X 0 002
 PLATING: COLOUR: A:Black
 1-G/F
 2-AU 3U"
 5-AU 15U"
 6-AU 30U"

PIN NO.	PIN NAME
PIN 1	Supply Voltage Vcc
PIN 2	Resrt(RST)
PIN 3	Clock (CLK)
PIN 5	Ground
PIN 6	Programming Voltage Vpp
PIN 7	I/O
PIN 4/8	N/A

ITEM	NAME	MATERIAL	Q'TY	REMARK
3	HOUSING	LCP E471 30%G/F,UL94 V-0,COLOR:BLACK;	1PCS	
2	SHELL	SUS201 T=0.20mm NO PLATING	1PCS	
1	CONTACT	C2680R-H T=0.15mm G/F PLATING ON CONTACT AREA	1PCS	

REV.	REVISION RECORD	DATE
A0	NEW RELEASE	21.01.13

GENERAL TOLERANCES		SCALE: 1:1	NAME	DATE
LINEAR	ANGLES	APPROVED	Wang_jr	21.01.13
0.0±0.35	X'REF±6°	DESIGNER	Ding_bo	21.01.13
0.00±0.25	X'±3'	DRAWN	Ou_jian	21.01.13
0.000±0.10	X'X' ±2'			

PART.NO: WLSMF9-062XX0002	DWG.NO: ENDE05
TITLE: SIM CARD 1.8H 连桥无档防泼PIN	



REV: A0 SHEET: 1/1