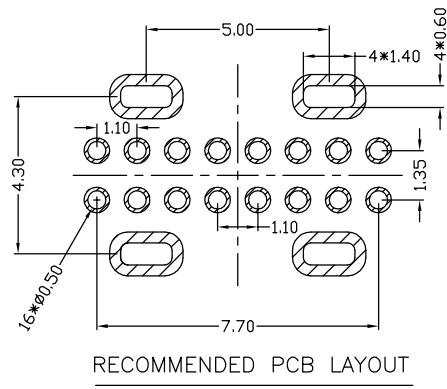
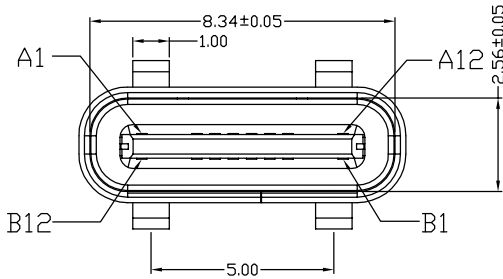
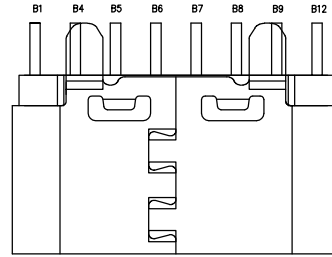
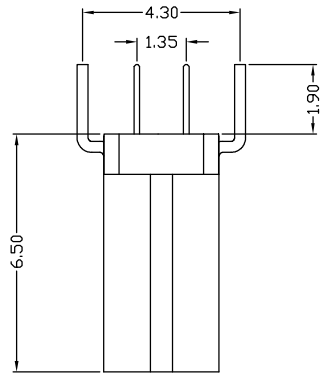
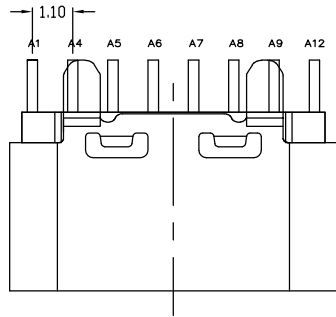


The product using material and processing must conform to the "WL-PZ-001"HSF technical standard control requirements

RoHS



NOTE:

1.MATERIAL SPECIFICATION:

- 1-1.HOUSING:LCP(G.F30%)
- 1-2.CONTACT:PHOSPHOR BRONZE
- 1-3.SHELL :SUS

2.PLATING SPECIFICATION:

- 2-1.CONTACT:AU G/F PLATING ON CONTACT AREA.
- 2-2.SHELL :NI PLATING ON CONTACT AREA.

3.MECHANICAL PERFORMANCE:

- 3-1.INSERTION FORCE: 2.0Kgf MAX
- 3-2.EXTRACTION FORCE:0.8Kgf MIN
- 3-3.DURABILITY: 10000 CYCLES.

4.ELECTRICAL PERFORMANCE:

- 4-1.RATED CURRENT:0.5A
- 4-2.VOLTAGE RATING:20V MAX
- 4-3.CONTACT RESISTANCE: 30mΩ MAX
- 4-4.INSULATION RESISTANCE: 100MΩ MIN
- 4-5.WITHSTANDING VOLTAGE: 100V AC

5.OPERATION TEMPERATURE RANGE:-25°C~85°C

6.WATER PROOFNESS:THIS PRODUCT IS BASED ON IPX6

7.PLUG INTERFACE DIMENSIONS COMFORM TO USB2.0 SPEC.

8.PACKAGE SPEC:REEL

9.P/N:

WLT2F0-16 1 X X X 215

PLATED: _____

1-G/F

2-Au 3u"

5-Au 15u"

6-Au 30u"

HOUSING: _____

1-LCP

2-PA

COLOUR: _____

A-BLACK

A1	GND	B12	GND
A2	SSTXP1	B11	SSRXN1
A3	SSTXN1	B10	SSRXN1
A4	VBUS	B9	VBUS
A5	CC1	B8	SBU2
A6	DP1	B7	DN2
A7	DN1	B6	DP2
A8	SBU1	B5	CC2
A9	VBUS	B4	VBUS
A10	SSRXN2	B3	SSTXN2
A11	SSRXN2	B2	SSTXP2
A12	GND	B1	GND
PIN	SIGNAL NAME	PIN	SIGNAL NAME

REV.	REVISION RECORD	DATE	GENERAL TOLERANCES		SCALE:	NAME	DATE	PART.NO:	DWG.NO:
A0	NEW RELEASE	21.01.13	LINEAR	ANGLES	1:1	Wang_jr	21.01.13	WLT2F0-161XXX215	ENDE05
			0.0±0.35	X°REF±6°	APPROVED	Han_Gao	21.01.13	TITLE: TYPE C 16P/F V/T H=6.5mm	REV: A0 SHEET: 1/1
			0.00±0.25	X°±3°	DESIGNER	Zijun_Huang	21.01.13		
			0.000±0.10	X°X' ±2°	DRAWN				



WanLian Teconology Co., Ltd