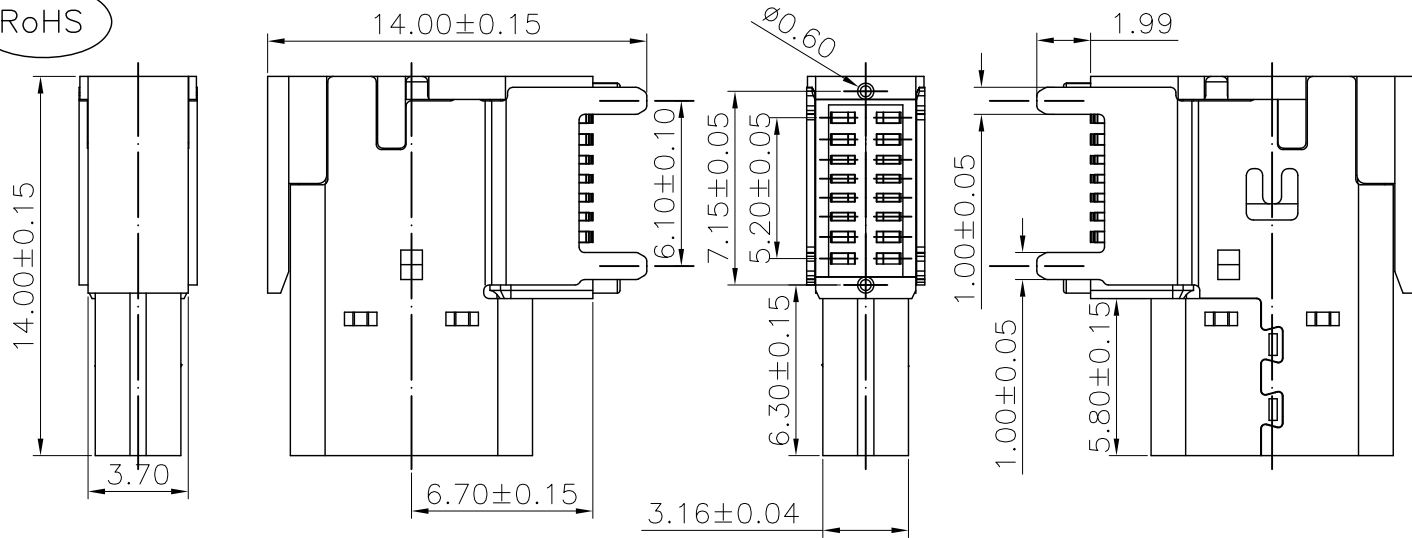


The product using material and processing must conform to the "WI-PZ-001" HSF technical standard control requirements

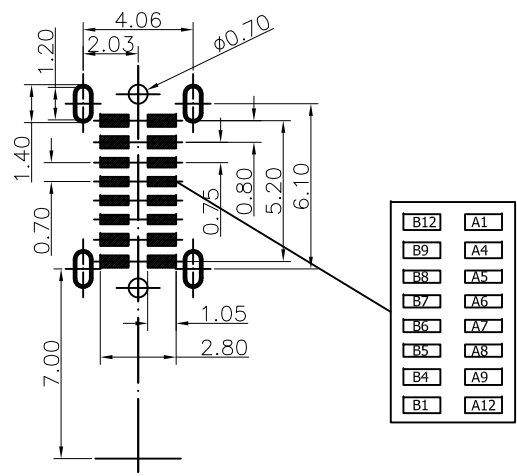
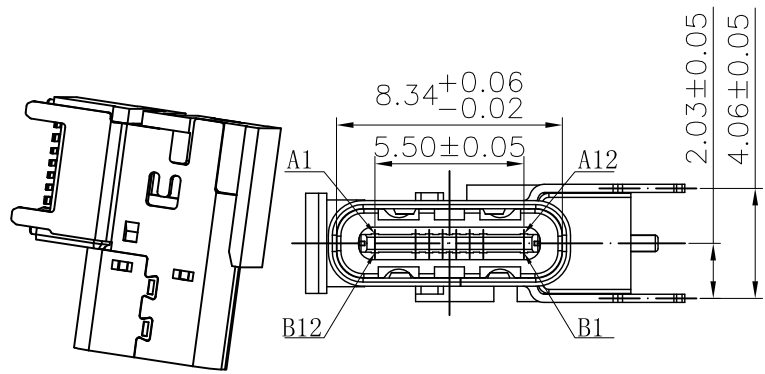
RoHS



NOTE:  
 1.MATERIAL SPECIFICATION:  
 1-1.HOUSING:LCP BLACK UL94 V-0  
 1-2.CONTACTS:COPPER ALLOY C7025  
 1-3.MID PLATE:STAINLESS STEEL  
 1-4.SHELL: STAINLESS STEEL  
 2.PLATING SPECIFICATION:  
 2-1.CONTACTS:  
 Ni UNDER PLATED OVER ALL.  
 Au PLATED ON THE FUNCTIONAL AREA OF CONTACT.  
 2-2.MID PLATE: CLEAR ONLY  
 2-3.FRONT SHELL:Ni UNDER PLATED OVER ALL.  
 3.MECHANICAL PERFORMANCE:  
 3-1.INSERTION FORCE: 2.0kgf MAX  
 3-2.REMOVAL FORCE: 0.8kgf MIN  
 3-3.DURABILITY: 10000 CYCLES.  
 4.ELECTRICAL PERFORMANCE:  
 4-1. CURRENT RATING:5.0A  
 VOLTAGE RATING:20V MAX  
 4-2. CONTACT RESISTANCE: 40m Ohm Max.  
 4-3.INSULATION RESISTANCE: 100MΩ MIN  
 4-4.WITHSTANDING VOLTAGE: 100V AC r.m.s.  
 5.ENVIRONMENTAL PERFORMANCE:  
 OPERATING TEMPERATURE: -25°C~+85°C.  
 6.P/N:

WLT2F9-16 2 X X 0203

PLATED: 1.G/F  
 2.Au 3u"  
 5.Au 15u"  
 6.Au 30u"  
 COLOUR: A.BLACK



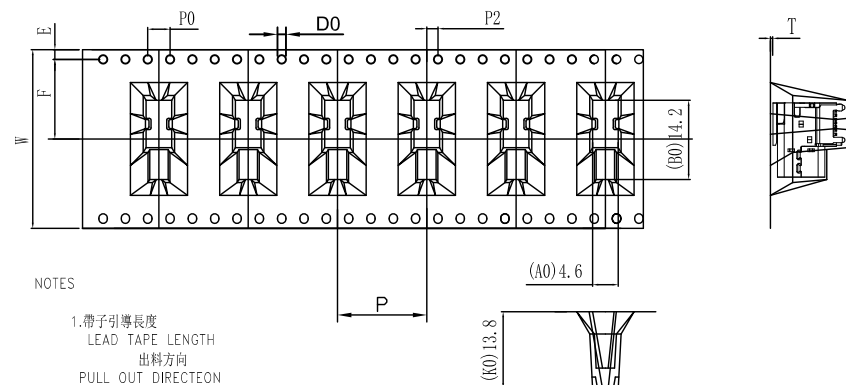
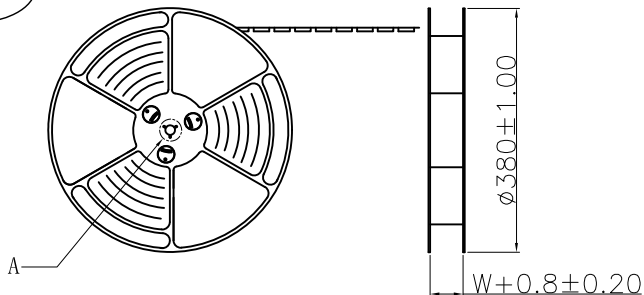
A1	GND	B12	GND
A2		B11	
A3		B10	
A4	VBUS	B9	VBUS
A5	CC1	B8	SBU2
A6	D+	B7	D-
A7	D-	B6	D+
A8	SBU1	B5	CC2
A9	VBUS	B4	VBUS
A10		B3	
A11		B2	
A12	GND	B1	GND

REV.	REVISION RECORD	DATE		GENERAL TOLERANCES		SCALE: 1:1	NAME	DATE	PART.NO: WLT2F9-162XX0203	DWG.NO: ENDE05		
A0	NEW RELEASE	21.01.13		LINEAR	ANGLES	APPROVED	Wang_jr	21.01.13				
			UNIT:mm	0.00±0.25	X°±3°	DESIGNER	Han_Gao	21.01.13	TITLE: TypeC 16P/F SMT CH=6.7mm		REV: A0	SHEET: 1/2
			SIZE: A4	0.000±0.10	X°X' ±2°	DRAWN	Zijun_Huang	21.01.13				

The product using material and processing must conform to the "WI-PZ-001" HSF technical standard control requirements

RoHS

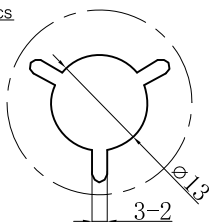
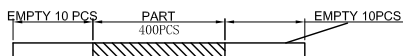
出料方向  
PULL OUT DIRECTEON



NOTES

1. 帶子引導長度  
LEAD TAPE LENGTH  
出料方向  
PULL OUT DIRECTEON

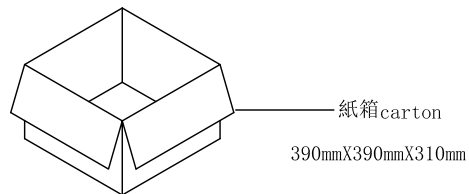
2. 上帶 剝力力為: 0.1~1.3N (10.2gf~130gf)  
PEELING OFF FORCE OF TOP TAPE: 0.1~1.3N (10.2gf~130gf)  
出貨'運輸過程中一定注意:  
THIS REQUIREMENT SHOULD BE APPLIED AT SHIPMENT:  
卷帶在運輸過程中不能散開  
PEELING OFF SHOULD NOT BE ALLOWED DURING TRANSPORTATION



DETAIL: A  
10:1



at small positioning hole of the carrier tape side).  
標籤黏貼處 (朝捲裝包材的小定位孔一側)  
Location of label sticking (label)



NOTE:  
1. 每捲包裝數量及每箱裝箱數量如左下表格。  
Packing q'ty of each reel & carton as below table shown.  
2. 將裝滿產品的卷盤放入紙箱并以膠帶封口  
Put reels in the carton and use adhesive tape to seal up.

W	32±0.3
F	14.2±0.1
SO	±0.1
T	0.50±0.1
E	1.75±0.1
P	16.0±0.1
P0	4±0.1
P2	2±0.15
A0	4.60±0.1
B0	14.2±0.1
K0	13.8±0.1
D0	1.50 <sup>+0.1</sup> <sub>-0.1</sub>

卷帶	规格: Ø380mm	包装数量: 400PCS
纸箱	规格: 390mmX390mmX310mm	包装数量: 8盘 / 3200PCS

REV.	REVISION RECORD	DATE		GENERAL TOLERANCES		SCALE: 1:1	NAME	DATE	PART.NO:	DWG.NO:	
A0	NEW RELEASE	21.01.13		LINEAR	ANGLES	APPROVED	Wang_jr	21.01.13	WLT2F9-162XX0203	ENDE05	
			UNIT:mm	0.00±0.25	X°REF±6°	DESIGNER	Han_Gao	21.01.13	TITLE:		REV: A0 SHEET: 2/2
			SIZE: A4	0.000±0.10	X°X' ±2°	DRAWN	Zijun_Huang	21.01.13	TypeC 16P/F SMT CH=6.7mm		