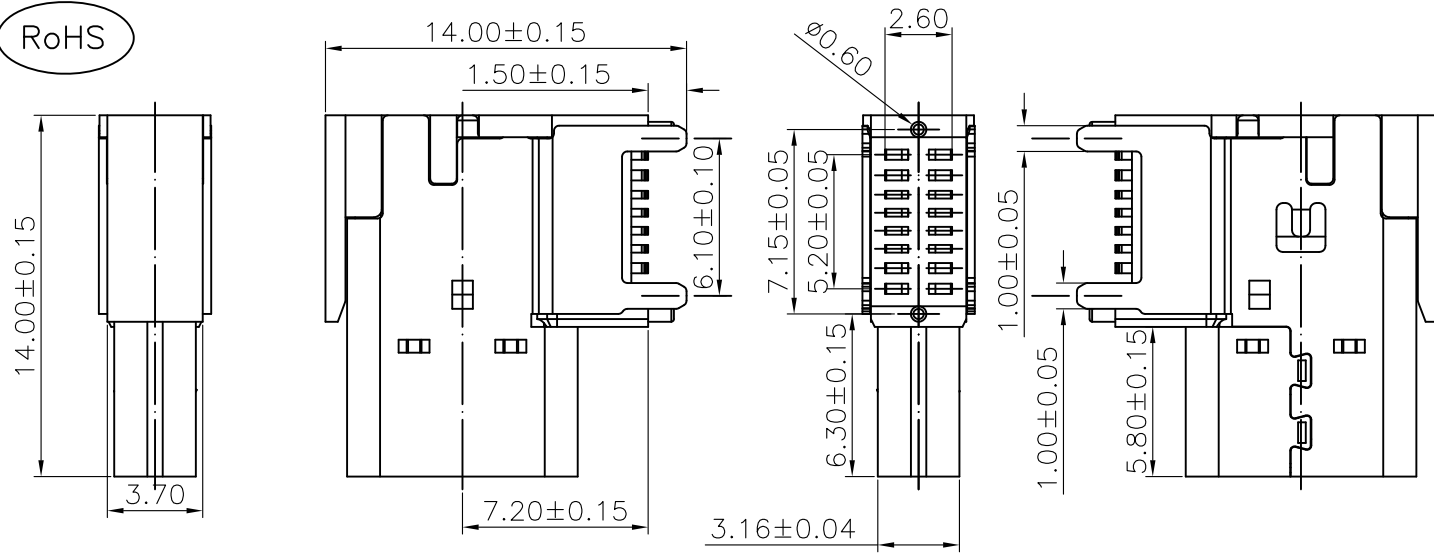


The product using material and processing must conform to the "WI-PZ-001"HSF technical standard control requirements

RoHS



NOTE:

1.MATERIAL SPECIFICATION:

- 1-1.HOUSING:LCP BLACK UL94 V-0
- 1-2.CONTACTS:COPPER ALLOY C7025
- 1-3.MID PLATE:STAINLESS STEEL
- 1-4.SHELL: STAINLESS STEEL

2.PLATING SPECIFICATION:

- 2-1.CONTACTS:
Ni UNDER PLATED OVER ALL.
Au PLATED ON THE FUNCTIONAL AREA OF CONTACT.
- 2-2.MID PLATE: CLEAR ONLY
- 2-3.FRONT SHELL:Ni UNDER PLATED OVER ALL.

3.MECHANICAL PERFORMANCE:

- 3-1.INSERTION FORCE: 2.0kgf MAX
- 3-2.REMOVAL FORCE: 0.8kgf MIN
- 3-3.DURABILITY: 10000 CYCLES.

4.ELECTRICAL PERFORMANCE:

- 4-1. CURRENT RATING:5.0A
VOLTAGE RATING:20V MAX
- 4-2. CONTACT RESISTANCE: 40m Ohm Max.
- 4-3.INSULATION RESISTANCE: 100MΩ MIN
- 4-4.WITHSTANDING VOLTAGE: 100V AC r.m.s.

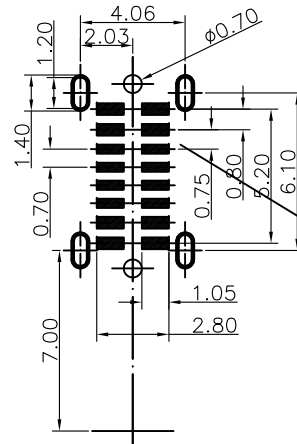
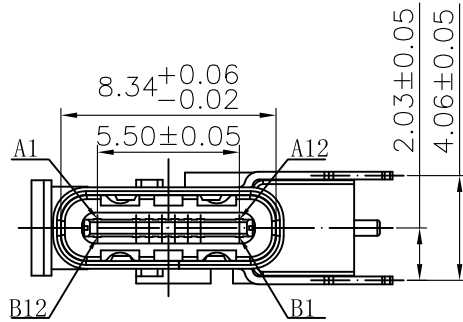
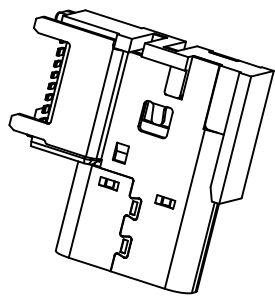
5.ENVIRONMENTAL PERFORMANCE:

- OPERATING TEMPERATURE: $-25^{\circ}\text{C} \sim +85^{\circ}\text{C}$.

6.P/N:

WLT2F9-16 2 X X 0204

PLATED: COLOUR:
1.G/F A.BLACK
2.Au 3u"
5.Au 15u"
6.Au 30u"



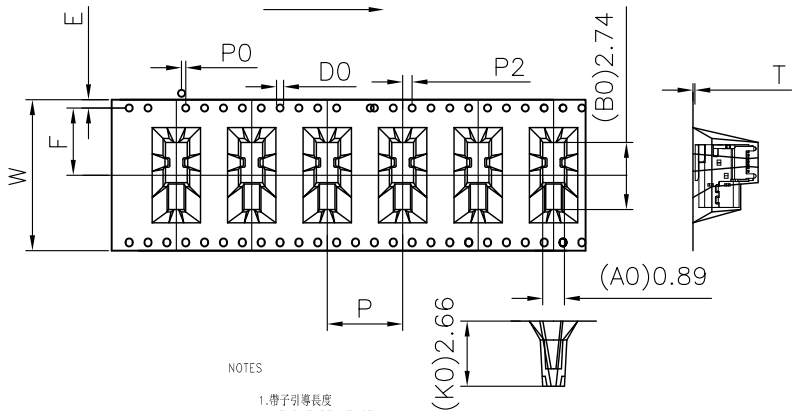
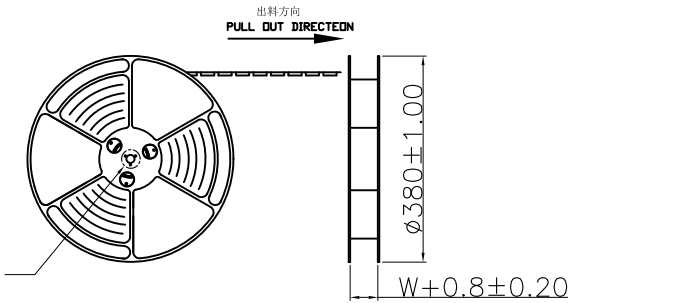
B12	A1
B9	A4
B8	A5
B7	A6
B6	A7
B5	A8
B4	A9
B1	A12

A1	GND	B12	GND
A2		B11	
A3		B10	
A4	VBUS	B9	VBUS
A5	CC1	B8	SBU2
A6	D+	B7	D-
A7	D-	B6	D+
A8	SBU1	B5	CC2
A9	VBUS	B4	VBUS
A10		B3	
A11		B2	
A12	GND	B1	GND

REV.	REVISION RECORD	DATE		GENERAL TOLERANCES		SCALE: 1:1	NAME	DATE	PART.NO:	DWG.NO:	
A0	NEW RELEASE	21.01.13		LINEAR	ANGLES	APPROVED	Wang_jr	21.01.13	WLT2F9-162XX0204	ENDE05	
			UNIT:mm	0.00 ± 0.25	$X^{\circ} \pm 3^{\circ}$	DESIGNER	Han_Gao	21.01.13	TITLE:		REV: A0 SHEET: 1/2
			SIZE: A4	0.000 ± 0.10	$X^{\circ} X^{\circ} \pm 2^{\circ}$	DRAWN	Zijun_Huang	21.01.13	Type C 16P/F SMT CH=7.2mm		

The product using material and processing must conform to the "WI-PZ-001" HSF technical standard control requirements

RoHS

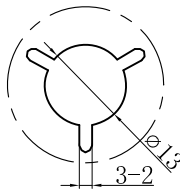


NOTES

1. 帶子引導長度
LEAD TAPE LENGTH
出料方向
PULL OUT DIRECTION

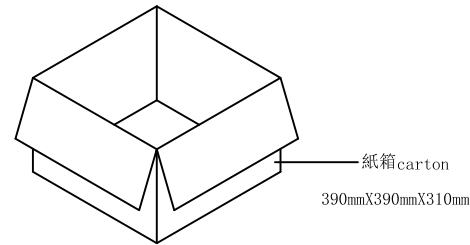
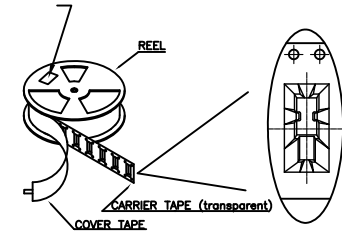
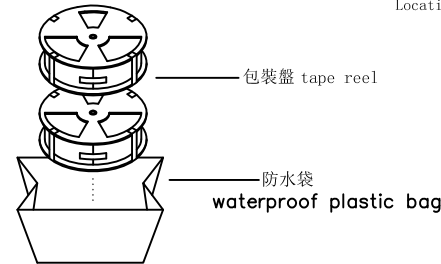
W	32 ± 0.3
F	14.2 ± 0.1
SO	± 0.1
T	0.50 ± 0.1
E	1.75 ± 0.1
P	16.0 ± 0.1
P0	4 ± 0.1
P2	2 ± 0.15
A0	4.60 ± 0.1
B0	14.2 ± 0.1
K0	13.8 ± 0.1
D0	1.50 ± 0.1

2. 上帶 剝力力為: 0.1~1.3N(10.2gf~130gf)
PEELING OFF FORCE OF TOP TAPE: 0.1~1.3N(10.2gf~130gf)
出貨運輸過程中一定注意:
THIS REQUIREMENT SHOULD BE APPLIED AT SHIPMENT:
卷帶在運輸過程中不能脫開
PEELING OFF SHOULD NOT BE ALLOWED DURING TRANSPORTATION



DETAIL: A
10:1

at small positioning hole of the carrier tape side).
標籤黏貼處 (朝捲裝包材的小定位孔一側)
Location of label sticking (label)



NOTE:

- 每捲包裝數量及每箱裝箱數量如左下表格。
Packing qty of each reel & carton as below table shown.
- 將裝滿產品的卷盤放入紙箱并以膠帶封口
Put reels in the carton and use adhesive tape to seal up.

卷帶	規格: Ø380mm	包裝數量: 400PCS
紙箱	規格: 390mm X 390mm X 310mm	包裝數量: 8盤 / 3200PCS

REV.	REVISION RECORD	DATE	UNIT:mm	GENERAL TOLERANCES		SCALE:	NAME	DATE	PART.NO: WLT2F9-162XX0204	DWG.NO: ENDE05	TITLE: Type C 16P/F SMT CH=7.2mm	REV: A0	SHEET: 2/2
AO	NEW RELEASE	21.01.13		LINEAR	ANGLES	1:1	APPROVED	Wang_jr					
			SIZE: A4	0.00 ± 0.25	X° ± 3°	DESIGNER	Han_Gao	21.01.13					
				0.000 ± 0.10	X° X' ± 2"	DRAWN	Zijun_Huang	21.01.13					

