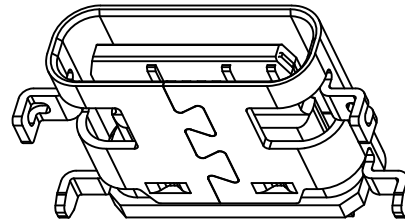


The product using material and processing must conform to the "WI-PZ-001"HSF technical standard control requirements

RoHS

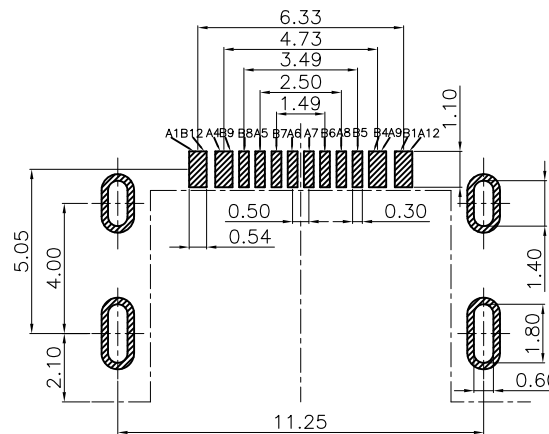
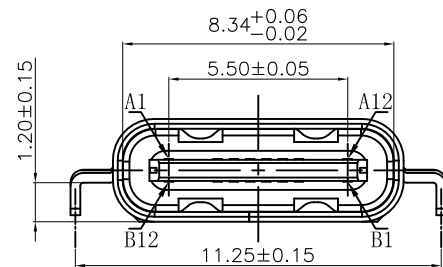
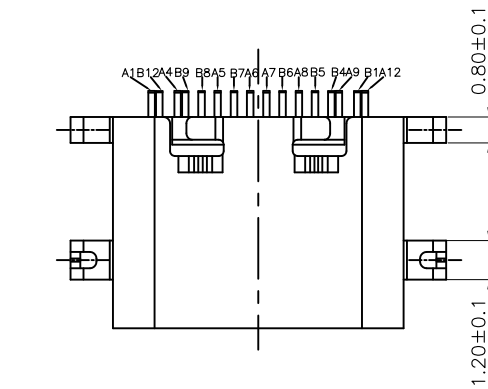
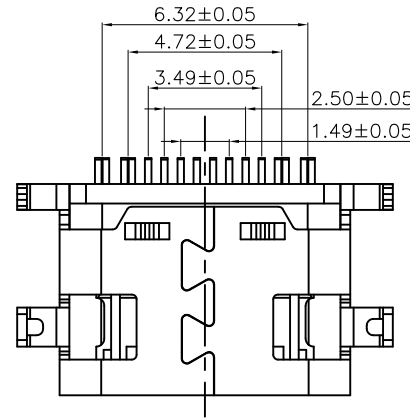
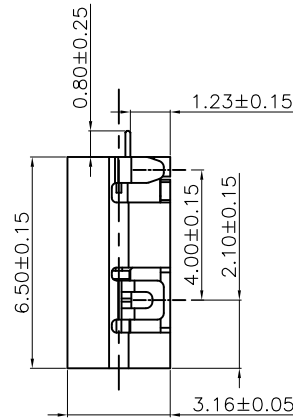
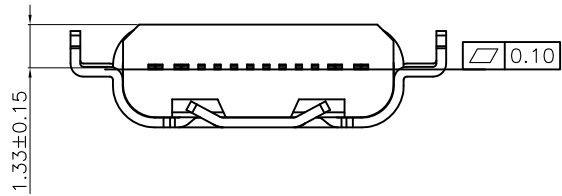


NOTE:

- 1.MATERIAL SPECIFICATION:
  - 1-1.HOUSING:PA9T BLACK UL94 V-0
  - 1-2.CONTACTS:COPPER ALLOY C7025
  - 1-3.MID PLATE:STAINLESS STEEL
  - 1-4.SHELL: STAINLESS STEEL
- 2.PLATING SPECIFICATION:
  - 2-1.CONTACTS:
    - Ni UNDER PLATED OVER ALL.
    - Au PLATED ON THE FUNCTIONAL AREA OF CONTACT.
  - 2-2.MID PLATE: CLEAR ONLY
  - 2-3.FRONT SHELL:Ni UNDER PLATED OVER ALL.
- 3.MECHANICAL PERFORMANCE:
  - 3-1.INSERTION FORCE: 2.0kgf MAX
  - 3-2.REMOVAL FORCE: 0.8kgf MIN
  - 3-3.DURABILITY: 10000 CYCLES.
- 4.ELECTRICAL PERFORMANCE:
  - 4-1. CURRENT RATING:5.0A  
VOLTAGE RATING:20V MAX
  - 4-2. CONTACT RESISTANCE: 40m Ohm Max.
  - 4-3.INSULATION RESISTANCE: 100MΩ MIN
  - 4-4.WITHSTANDING VOLTAGE: 100V AC r.m.s.
- 5.ENVIRONMENTAL PERFORMANCE:
  - OPERATING TEMPERATURE: -25°C~+85°C.
- 6.P/N:

WLT2F9-16 8 X X 0189

PLATED: 1.G/F  
2.Au 3u"  
5.Au 15u"  
6.Au 30u"  
COLOUR: A.BLACK

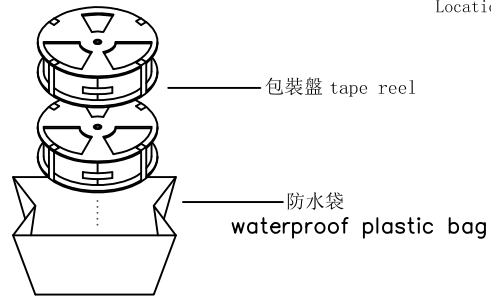
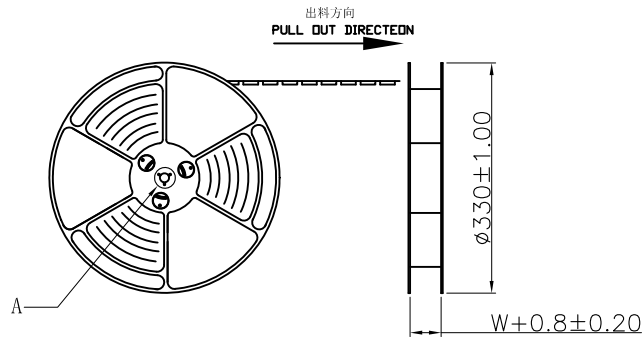


A1	GND	B12	GND
A2		B11	
A3		B10	
A4	VBUS	B9	VBUS
A5	CC1	B8	SBU2
A6	D+	B7	D-
A7	D-	B6	D+
A8	SBU1	B5	CC2
A9	VBUS	B4	VBUS
A10		B3	
A11		B2	
A12	GND	B1	GND

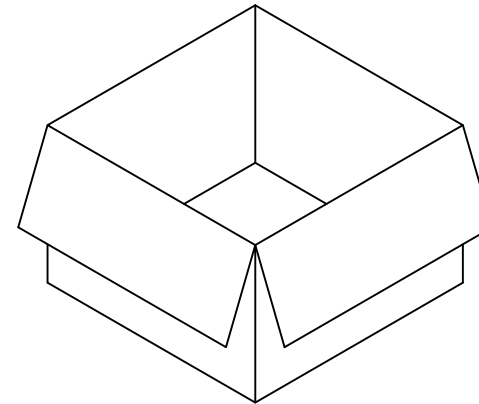
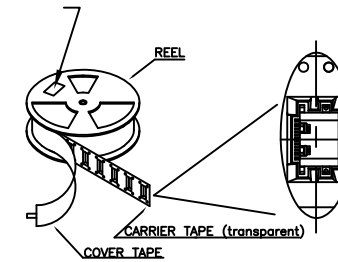
REV.	REVISION RECORD	DATE		GENERAL TOLERANCES		SCALE:	NAME	DATE	PART.NO: WLT2F9-168XX0189	DWG.NO: ENDE05	
A0	NEW RELEASE	21.01.13		LINEAR	ANGLES	1:1	Wang_jr	21.01.13			
			UNIT:mm	0.00±0.25	X°±3°	DESIGNER	Han_Gao	21.01.13	TITLE: Type-C 16P/F H=1.2mm L=6.5mm		
			SIZE: A4	0.000±0.10	X°X' ±2°	DRAWN	Zijun_Huang	21.01.13			

The product using material and processing must conform to the "WI-PZ-001" HSF technical standard control requirements

RoHS

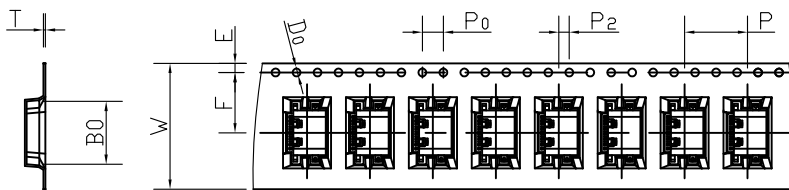


at small positioning hole of the carrier tape side.  
標簽黏貼處 (朝捲裝包材的小定位孔一側)  
Location of label sticking (label)



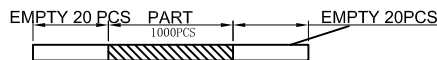
NOTE:

- 每捲包裝數量及每箱裝箱數量如左下表格。  
Packing q'ty of each reel & carton as below table shown.
- 將裝滿產品的卷盤放入紙箱并以膠帶封口  
Put reels in the carton and use adhesive tape to seal up.

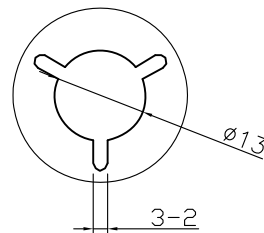
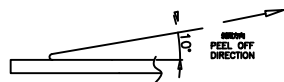


NOTES

1. 帶子引導長度  
LEAD TAPE LENGTH  
出料方向  
PULL OUT DIRECTEON



2. 上帶 剝力力為:  $0.1 \sim 1.3N$  (10.2gf~130gf)  
PEELING OFF FORCE OF TOP TAPE:  $0.1 \sim 1.3N$  (10.2gf~130gf)  
出貨'運輸過程中一定注意:  
THIS REQUIREMENT SHOULD BE APPLIED AT SHIPMENT;  
卷帶在運輸過程中不能散開  
PEELING OFF SHOULD NOT BE ALLOWED DURING TRANSPORTATION



DETAIL: A  
10:1

紙箱: 340mmX340mmX325mm

W	24.00±0.3
A0	7.6±0.1
B0	12.0±0.1
K0	3.55±0.1
P	12.00±0.1
F	11.50±0.1
E	1.75±0.1
D0	1.50±0.1
P0	4.00±0.1
P2	2.00±0.1
T	0.35±0.1

卷帶	規格: $\phi 330mm$	包裝數量: 1000PCS
紙箱	規格: 340mmX340mmX325mm	包裝數量: 10盤(10000PCS)

REV.	REVISION RECORD	DATE		GENERAL TOLERANCES		SCALE: 1:1	NAME	DATE	PART.NO: WLT2F9-168XX0189	DWG.NO: ENDE05	
A0	NEW RELEASE	21.01.13		LINEAR	ANGLES	APPROVED	Wang_jr	21.01.13			
			UNIT:mm	$0.00 \pm 0.25$	$X^\circ \pm 3'$	DESIGNER	Han_Gao	21.01.13	TITLE: package drawing		
			SIZE: A4	$0.000 \pm 0.10$	$X^\circ X' \pm 2''$	DRAWN	Zijun_Huang	21.01.13			
										REV: A0	SHEET: 2/2