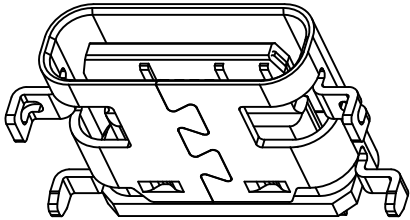
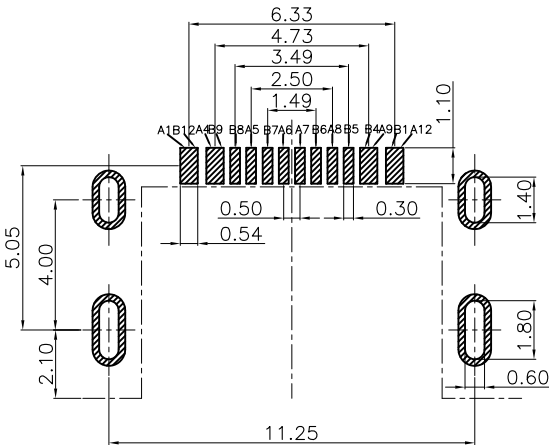
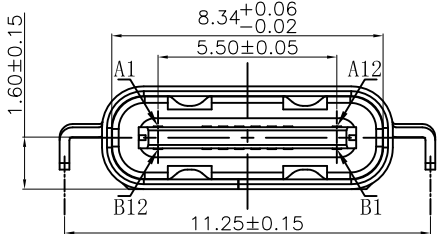
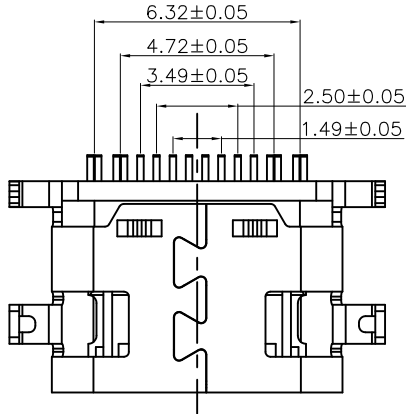
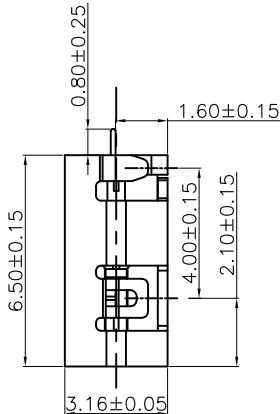
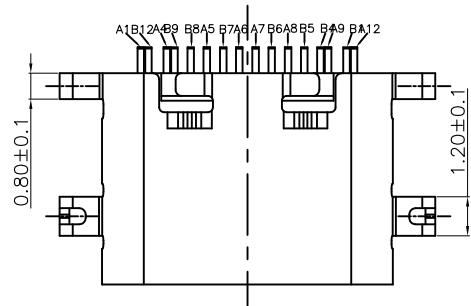
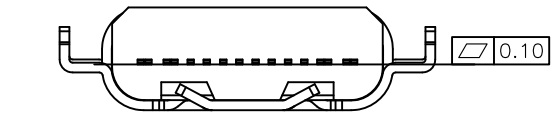


The product using material and processing must conform to the "WI-PZ-001"HSF technical standard control requirements

RoHS



NOTE:
1.MATERIAL SPECIFICATION:
1-1.HOUSING:PA9T BLACK UL94 V-0
1-2.CONTACTS:COPPER ALLOY C7025
1-3.MID PLATE:STAINLESS STEEL
1-4.SHELL: STAINLESS STEEL
2.PLATING SPECIFICATION:
2-1.CONTACTS:
Ni UNDER PLATED OVER ALL.
Au PLATED ON THE FUNCTIONAL AREA OF CONTACT.
2-2.MID PLATE: CLEAR ONLY
2-3.FRONT SHELL:Ni UNDER PLATED OVER ALL.
3.MECHANICAL PERFORMANCE:
3-1.INSERTION FORCE: 2.0kgf MAX
3-2.REMOVAL FORCE: 0.8kgf MIN
3-3.DURABILITY: 10000 CYCLES.
4.ELECTRICAL PERFORMANCE:
4-1. CURRENT RATING:5.0A
VOLTAGE RATING:20V MAX
4-2. CONTACT RESISTANCE: 40m Ohm Max.
4-3.INSULATION RESISTANCE: 100MΩ MIN
4-4.WITHSTANDING VOLTAGE: 100V AC r.m.s.
5.ENVIRONMENTAL PERFORMANCE:
OPERATING TEMPERATURE: -25°C~+85°C.
6.P/N:
WLT2F9-16 8 X X 0190
PLATED: 1.G/F COLOUR: A.BLACK
2.Au 3u"
5.Au 15u"
6.Au 30u"

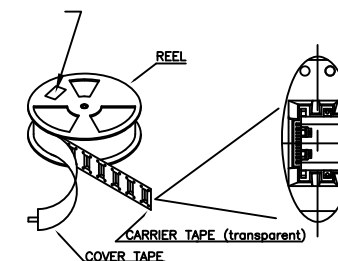
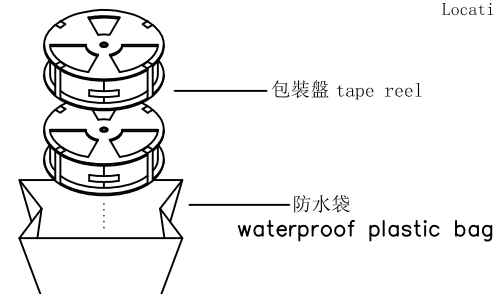
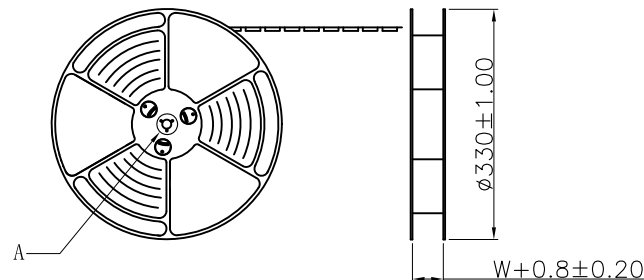


A1	GND	B12	GND
A2		B11	
A3		B10	
A4	VBUS	B9	VBUS
A5	CC1	B8	SBU2
A6	D+	B7	D-
A7	D-	B6	D+
A8	SBU1	B5	CC2
A9	VBUS	B4	VBUS
A10		B3	
A11		B2	
A12	GND	B1	GND

REV.	REVISION RECORD	DATE		GENERAL TOLERANCES		SCALE: 1:1	NAME	DATE	PART.NO: WLT2F9-168XX0190	DWG.NO: ENDE05	 WanLian Teconology Co., Ltd	
A0	NEW RELEASE	21.01.13		LINEAR	ANGLES	APPROVED	Wang_jr	21.01.13				
				0.0±0.35	X°REF±6°	DESIGNER	Han_Gao	21.01.13	TITLE: Type-C 16P/F H=1.6mm L=6.5mm			
				UNIT:mm	0.00±0.25	X°±3°	DRAWN	Zijun_Huang				21.01.13
			SIZE: A4	0.000±0.10	X°X' ±2°						REV: A0	SHEET: 1/2

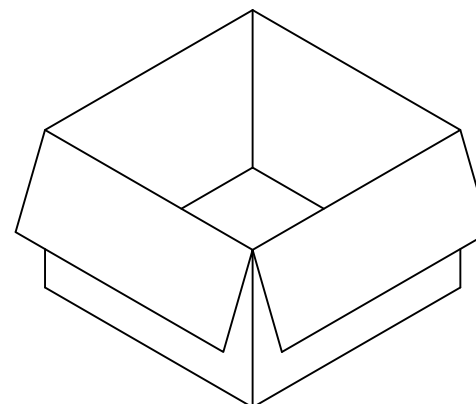
at small positioning hole of the carrier tape side).
 標籤黏貼處 (朝捲裝包材的小定位孔一側)
 Location of label sticking (label)

出料方向
PULL OUT DIRECTION



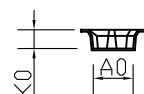
1.每捲包裝數量及每箱裝箱數量如左下表格。
Packing q'ty of each reel & carton
as belowtable shown.

2.將裝滿產品的卷盤放入紙箱并以膠帶封口
Put reels in the carton and use
adhesive tape to seal up.

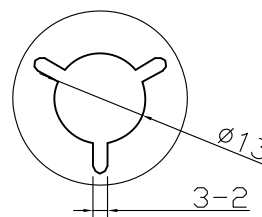
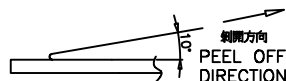


紙箱:340mmX340mmX325mm

1.帶子引導長度
LEAD TAPE LENGTH
出料方向
PULL OUT DIRECTEON



2.上帶 斜力為: 0.1~1.3N(10.2gf~130gf)
PEELING OFF FORCE OF TOP TAPE:0.1~1.3N(10.2gf~130gf)
出貨運輸過程中一定注意:
THIS REQUIREMENT SHOULD BE APPLIED AT SHIPMENT:
卷帶在運輸過程中不能散開
PEELING OFF SHOULD NOT BE ALLOWED DURING TRANSPORTATION



DETAIL: A
10:1

卷带	规格: $\varnothing 330\text{mm}$	包装数量: 1000PCS
纸箱	规格: $340\text{mm} \times 340\text{mm} \times 325\text{mm}$	包装数量: 10盘(10000PCS)

W	24.00 ± 0.3
A0	7.6 ± 0.1
B0	12.0 ± 0.1
K0	3.55 ± 0.1
P	12.00 ± 0.1
F	11.50 ± 0.1
E	1.75 ± 0.1
D0	1.50 ± 0.1
P0	4.00 ± 0.1
P2	2.00 ± 0.1
T	0.35 ± 0.1

REV.	REVISION RECORD	DATE		GENERAL TOLERANCES		SCALE: 1:1	NAME	DATE	PART.NO: WLT2F9-168XX0190	DWG.NO: ENDE05	 WanLian Teconology Co., Ltd	
A0	NEW RELEASE	21.01.13		LINEAR	ANGLES	APPROVED	Wang_jr	21.01.13				
				0.0±0.35	X°REF±6°							
			UNIT:mm	0.00±0.25	X°±3°	DESIGNER	Han_Gao	21.01.13	TITLE: package drawing			
				SIZE: A4	0.000±0.10	X°X' ±2°	DRAWN	Zijun_Huang		21.01.13		
											REV: A0	SHEET: 2/2

 万连科技
WanLian Teconology Co., Ltd

REV: A0	SHEET: 2/2
---------	------------