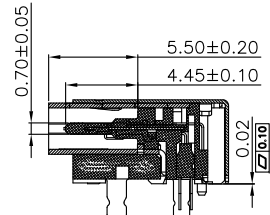
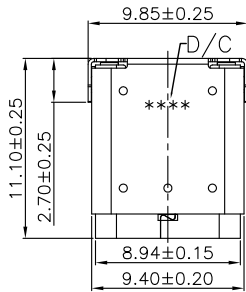
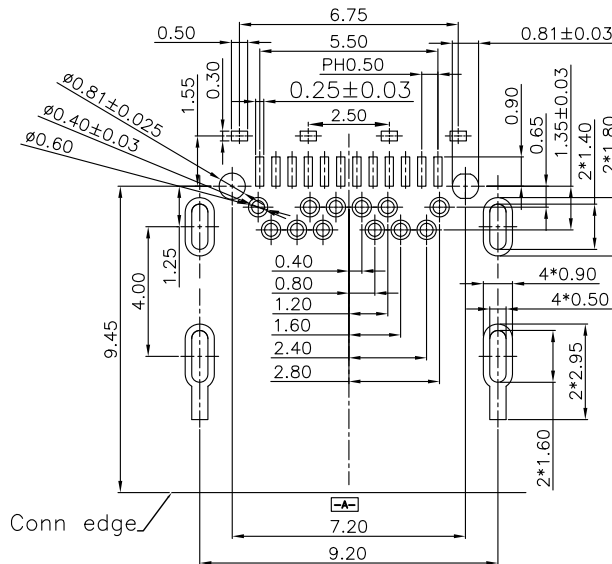


The product using material and processing must conform to the "WI-PZ-001"HSF technical standard control requirements

RoHS



SECTION A-A
SCALE 1:1



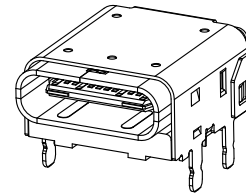
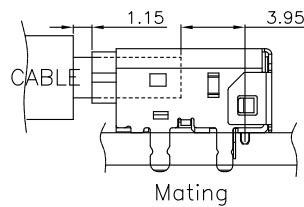
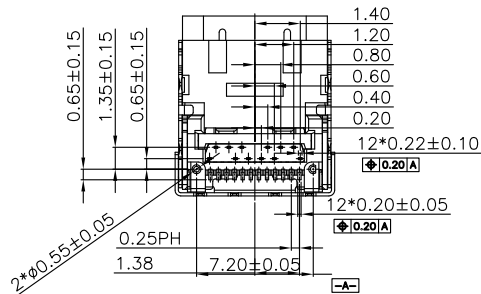
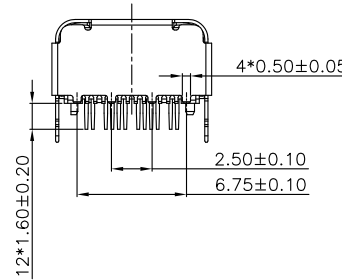
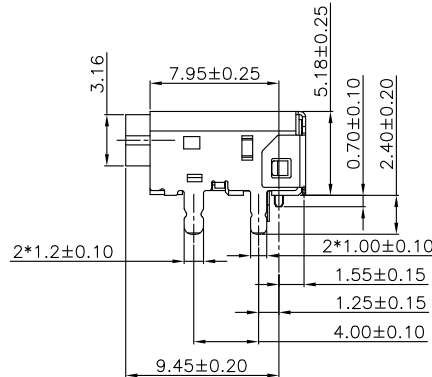
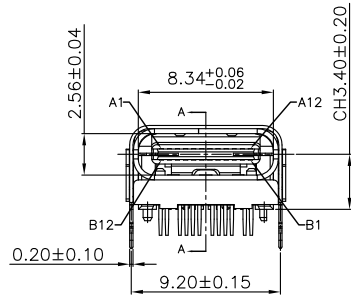
RECOMMENDED PCB LAYOUT(TOP) SCALE 2:1
TOLERANCES:±0.05MM

NOTE:


- MATERIAL SPECIFICATION:
 - HOUSING:LCP UL94-V0 COLOUR:BLACK
 - CONTACT:C7025 T=0.12mm
 - MID-PLATE:SUS301 T=0.15mm
 - SHELL-IN:SUS304 T=0.30mm
 - SHELL-OUT:SUS301 T=0.20mm
- PLATING SPECIFICATION:
 - CONTACTS:
 - Ni UNDER PLATED OVER ALL.
 - Au PLATED ON THE FUNCTIONAL AREA OF CONTACT.
 - MID PLATE: CLEAR ONLY
 - SHELL:Ni UNDER PLATED OVER ALL.
- MECHANICAL PERFORMANCE:
 - INSERTION FORCE: 2.0kgf MAX
 - REMOVAL FORCE: 0.8kgf MIN
 - DURABILITY: 10000 CYCLES.
- ELECTRICAL PERFORMANCE:
 - CURRENT RATING:
 - 3A FOR VBUS PIN;
 - 1.25A FOR VCONN AND GND PIN;
 - 0.25A FOR ALL THE OTHER PIN.
 - VOLTAGE RATING:20V MAX
 - CONTACT RESISTANCE: 40m Ohm Max.
 - INSULATION RESISTANCE: 100MΩ MIN
 - WITHSTANDING VOLTAGE: 100V AC r.m.s.
- ENVIRONMENTAL PERFORMANCE:
 - OPERATING TEMPERATURE: -25°C~+85°C.
- PACKAGE SPEC:TAPE&REEL

WLT4F9-24 3 X X 0 206

PLATED: COLOUR:
1-G/F A-BLACK
2-Au 3u"
5-Au 15u"
6-Au 30u"



A1	GND	B12	GND
A2	SSTXP1	B11	SSRXP1
A3	SSTXN1	B10	SSRXN1
A4	VBUS	B9	VBUS
A5	CC1	B8	SBU2
A6	DP1	B7	DN2
A7	DN1	B6	DP2
A8	SBU1	B5	CC2
A9	VBUS	B4	VBUS
A10	SSRXN2	B3	SSTXN2
A11	SSRXP2	B2	SSTXP2
A12	GND	B1	GND
PIN	SIGNAL NAME	PIN	SIGNAL NAME

REV.	REVISION RECORD	DATE	GENERAL TOLERANCES		SCALE:	NAME	DATE	PART.NO:	DWG.NO:	 WanLian Teconology Co., Ltd
A0	NEW RELEASE	21.01.13	LINEAR	ANGLES	1:1	Wang_jr	21.01.13	WLT4F9-243XX0206	ENDE05	
			0.00±0.25	X°±3°	APPROVED	Han_Gao	21.01.13	TITLE: TYPE C 24P/F DIP+SMT L=11.10mm	REV: A0	SHEET: 1/1
			0.000±0.10	X°X' ±2°	DESIGNER	Zijun_Huang	21.01.13			