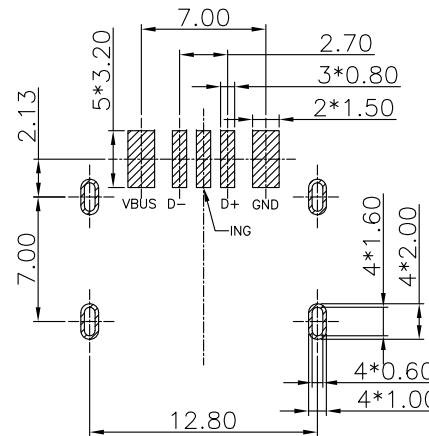
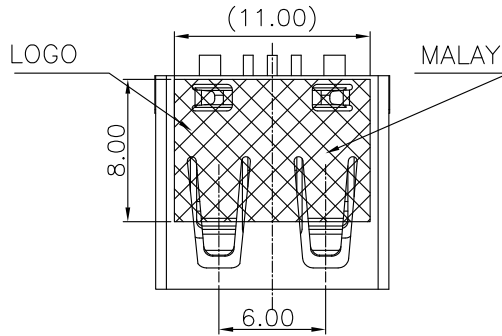
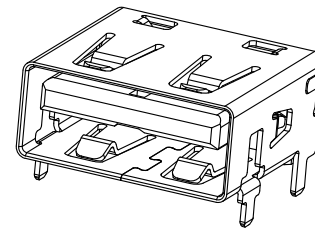
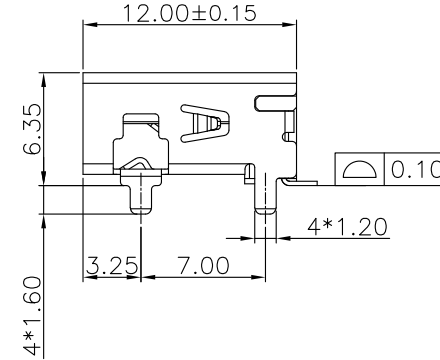


The product using material and processing must conform to the "WI-PZ-001"HSF technical standard control requirements

RoHS



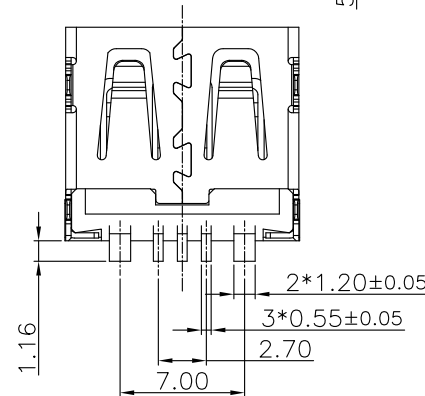
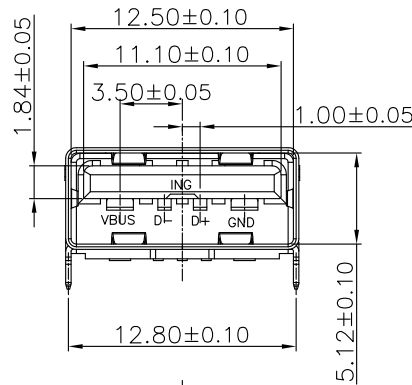
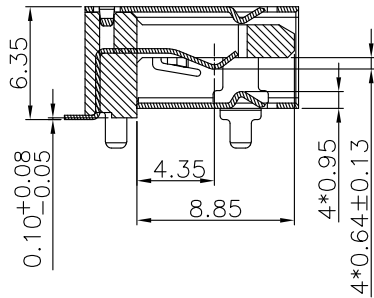
RECOMMENDED P.C.B LAYOUT P.C.B THICKNESS=1.2mm(TOLERANCE=±0.05)



NOTE:

- 1.MATERIAL SPECIFICATION:
 - 1-1.HOUSING:LCP
 - 1-2.CONTACTS:C7025.
 - 1-3.SHELL: SUS304
- 2.PLATING SPECIFICATION:
 - 2-1.CONTACTS:
 - Ni UNDER PLATED OVER ALL.
 - Sn WELDING AREA PLATED OVER ALL.
 - Au PLATED ON THE FUNCTIONAL AREA OF CONTACT.
 - 2-2. SHELL:
 - Ni UNDER PLATED OVER ALL.
- 3.MECHANICAL PERFORMANCE:
 - 3-1.INSERTION FORCE: 3.57kgf MAX
 - 3-2.REMOVAL FORCE: 1.02kgf MIN
 - 3-3.DURABILITY: 1500 CYCLES.
- 4.ELECTRICAL PERFORMANCE:
 - 4-1.CURRENT RATING:1.5A
 - 4-2.VOLTAGE RATING:30V MAX
 - 4-3.CONTACT RESISTANCE: 30m Ohm MAX.
 - 4-4.INSULATION RESISTANCE: 1000MΩ MIN
 - 4-5.DIELECTRIC WITHSTANDING VOLTAGE: 500V AC MIN.
- 5.ENVIRONMENTAL PERFORMANCE:
 - OPERATING TEMPERATURE: -20°C~+85°C.
- 6.P/N:
 - WLU2F9-04 2 X X 0156

PLATED: 1-G/F
2-Au 3u"
5-Au 15u"
6-Au 30u"
COLOUR: A-BLACK
D-ORANGE



REV.	REVISION RECORD	DATE	GENERAL TOLERANCES		SCALE:	NAME	DATE	PART.NO:	DWG.NO:
A0	NEW RELEASE	21.01.13		LINEAR	1:1	Wang_jr	21.08.01	WLU2F9-042XX0156	ENDE05
				ANGLES					
				0.0±0.35	X*REF±6°	Han_Gao	21.08.01	TITLE:	WanLian Teconology Co., Ltd
				0.00±0.25	X°±3°				
			UNIT:mm	0.000±0.10	X°X' ±2°			REV: A0	SHEET: 1/1
			SIZE: A4						



REV: A0 SHEET: 1/1