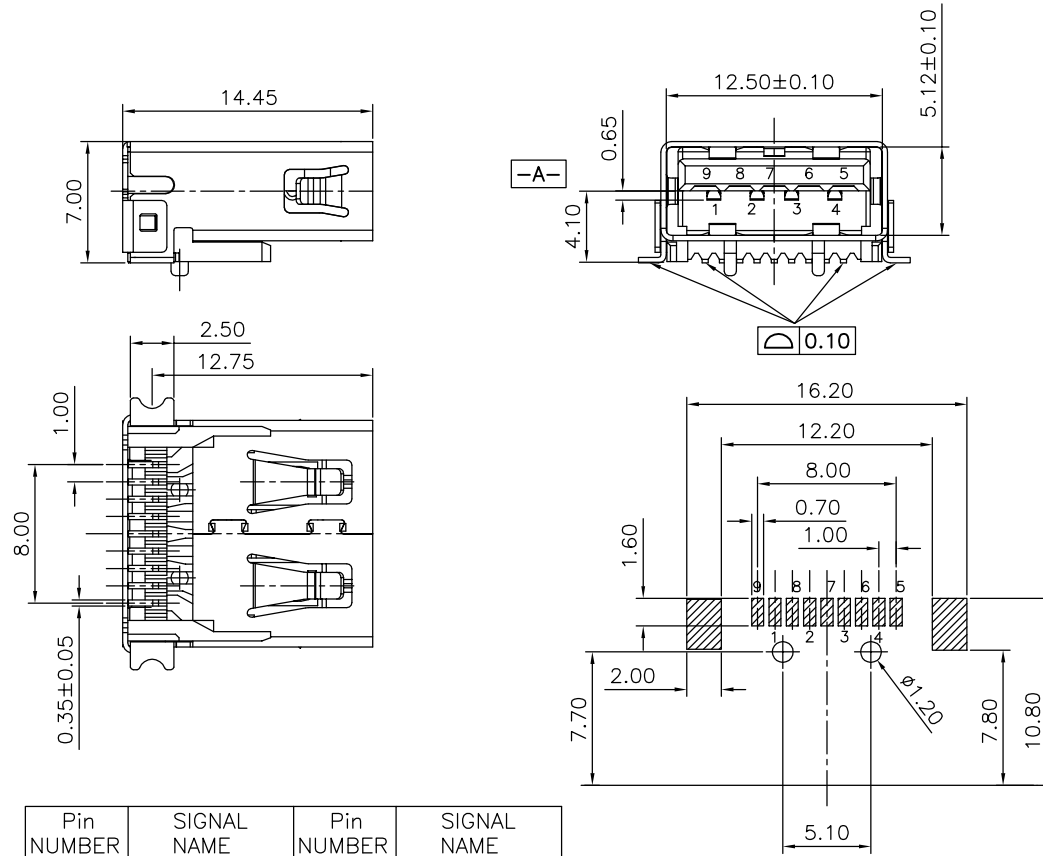


The product using material and processing must conform to the "WI-PZ-001"HSF technical standard control requirements

RoHS



PCB EDGE  
RECOMMENDED PCB LAYOUT

Pin NUMBER	SIGNAL NAME	Pin NUMBER	SIGNAL NAME
1	VBUS	5	StdA_SSRX-
2	D-	6	StdA_SSRX+
3	D+	7	GND_DRAIN
4	GND	8	StdA_SSTX-
		9	StdA_SSTX+
SHELL	SHIELD	SHELL	SHIELD

NOTE:

- MATERIAL SPECIFICATION:
  - HOUSING:LCP BLUE UL94V-0
  - CONTACTS:C2680.
  - SHELL:STAINLESS STEEL.
- PLATING SPECIFICATION:
  - CONTACTS:
    - Ni 50u" MIN. UNDER PLATED OVER ALL.
    - Sn 80u"MIN ON SOLDER AREA
    - Au PLATED ON THE CONTACTS AREA.
  - SHELL:
    - Ni 80u" MIN. UNDER PLATED OVER ALL.
- MECHANICAL PERFORMANCE:
  - INSERTION FORCE: 3.57kgf MAX
  - REMOVAL FORCE: 1.02kgf MIN
  - DURABILITY: 5000 CYCLES.
- ELECTRICAL PERFORMANCE:
  - CURRENT RATING:1.5A
  - VOLTAGE RATING:30V MAX
  - CONTACT RESISTANCE: 30mΩ MAX.
  - INSULATION RESISTANCE: 1000MΩ MIN
  - DIELECTRIC WITHSTANDING VOLTAGE: 100V AC MIN.
- ENVIRONMENTAL PERFORMANCE:
  - OPERATING TEMPERATURE: -40°C~+85°C.
- PACKAGE SPEC: TRAY
- P/N ORDER:

WLU3F9-09 2 X X X 092

PLATING: \_\_\_\_\_ SHELL: \_\_\_\_\_  
 1-G/F 1-SPCC  
 2-AU 3U" 2-COPPER ALLOY  
 5-AU 15U" 3-SUS  
 6-AU 30U" \_\_\_\_\_ HOUSING COLOUR:  
 A-BLACK  
 G-BLUE

REV.	REVISION RECORD	DATE	UNIT:mm	GENERAL TOLERANCES		SCALE: 1:1	NAME	DATE	PART.NO:	DWG.NO:	 WanLian Teconology Co., Ltd
A0	NEW RELEASE	21.01.13		LINEAR	ANGLES	APPROVED	Wang_jr	21.01.13	WLU3F9-092XXX092	ENDE05	
			0.00±0.25	X'±3°	DESIGNER	Han_Gao	21.01.13	TITLE: USB3.0 A TYPE 9P/F SMT			REV: A0 SHEET: 1/1
			0.00±0.10	X*X' ±2°	DRAWN	Zijun_Huang	21.01.13				