

The product using material and processing must conform to the "WL-PZ-001"HSF technical standard control requirements

RoHS

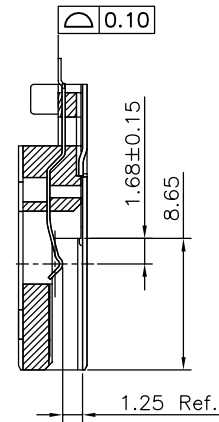
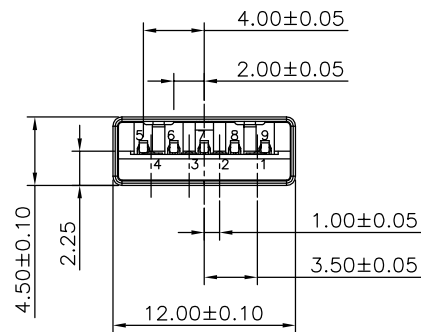
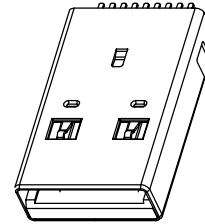
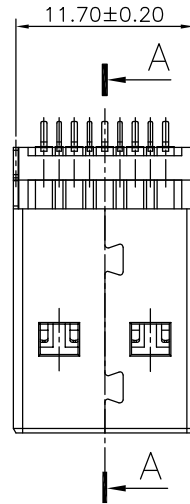
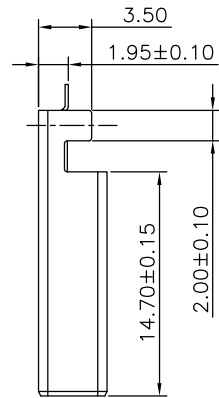
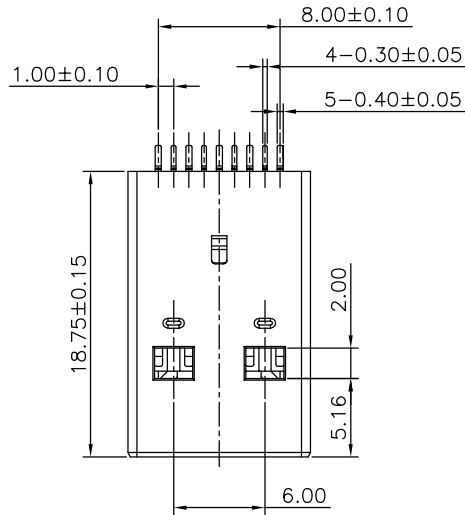
NOTE:

- 1.MATERIAL SPECIFICATION:
 - 1-1.HOUSING: LCP BLUE UL94V-0.
 - 1-2.CONTACTS: COPPER ALLOY.
 - 1-3.SHELL: METAL.
- 2.PLATING SPECIFICATION:
 - 2-1.CONTACTS: AU G/F MIN. ON MATING AREA. TIN 80u"MIN ON THE TAILS
 - 2-2. SHELL: Ni 80u" MIN. UNDER PLATED OVER ALL.
- 3.MECHANICAL PERFORMANCE:
 - 3-1.INSERTION FORCE: 3.57kgf MAX
 - 3-2.REMOVAL FORCE: 1.02kgf MIN
 - 3-3.DURABILITY: 1500 CYCLES.
- 4.ELECTRICAL PERFORMANCE:
 - 4-1.CURRENT RATING:1.5A
 - 4-2.VOLTAGE RATING:30V MAX
 - 4-3.CONTACT RESISTANCE: 30m Ohm MAX.
 - 4-4.INSULATION RESISTANCE: 100MΩ MIN
 - 4-5.DIELECTRIC WITHSTANDING VOLTAGE: 100V AC MIN.
- 5.ENVIRONMENTAL PERFORMANCE:
 - OPERATING TEMPERATURE: -40°C~+85°C.
- 6.PACKAGE SPEC: TRAY
- 7.P/N ORDER:

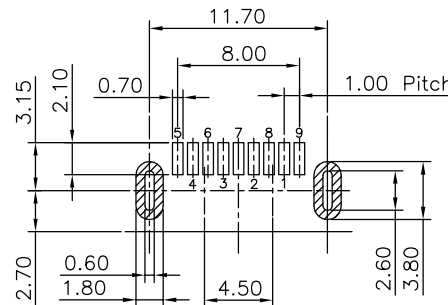
WLU3M9-09 8 X X X 074

PLATING:
 1-G/F
 2-Au 3u"
 5-Au 15u"
 6-Au 30u"
 SHELL:
 1-SPCC
 2-COPPER ALLOY
 3-SUS
 HOUSING COLOUR:
 A-BLACK
 G-BLUE

Pin NUMBER	SIGNAL NAME	Pin NUMBER	SIGNAL NAME
1	VBUS	5	StdA_SSRX-
2	D-	6	StdA_SSRX+
3	D+	7	GND_DRAIN
4	GND	8	StdA_SSTX-
		9	StdA_SSTX+
SHELL	SHIELD	SHELL	SHIELD



SECTION "A-A"



REV.	REVISION RECORD	DATE	GENERAL TOLERANCES		SCALE:	NAME	DATE	PART.NO:	DWG.NO:	 WanLian Teconology Co., Ltd
A0	NEW RELEASE	21.01.13	LINEAR	ANGLES	1:1	APPROVED	Wang_jr	WLU3M9-098XXX074	ENDE05	
			0.0±0.35	X°REF±6°		DESIGNER	Han_Gao	TITLE: USB3.0 A TYPE 9P/M SMT H1.9mm		REV: A0 SHEET: 1/1
			0.00±0.25	X°±3°		DRAWN	Zijun_Huang			
			UNIT:mm	0.00±0.10						
			SIZE: A4	X°X' ±2°						