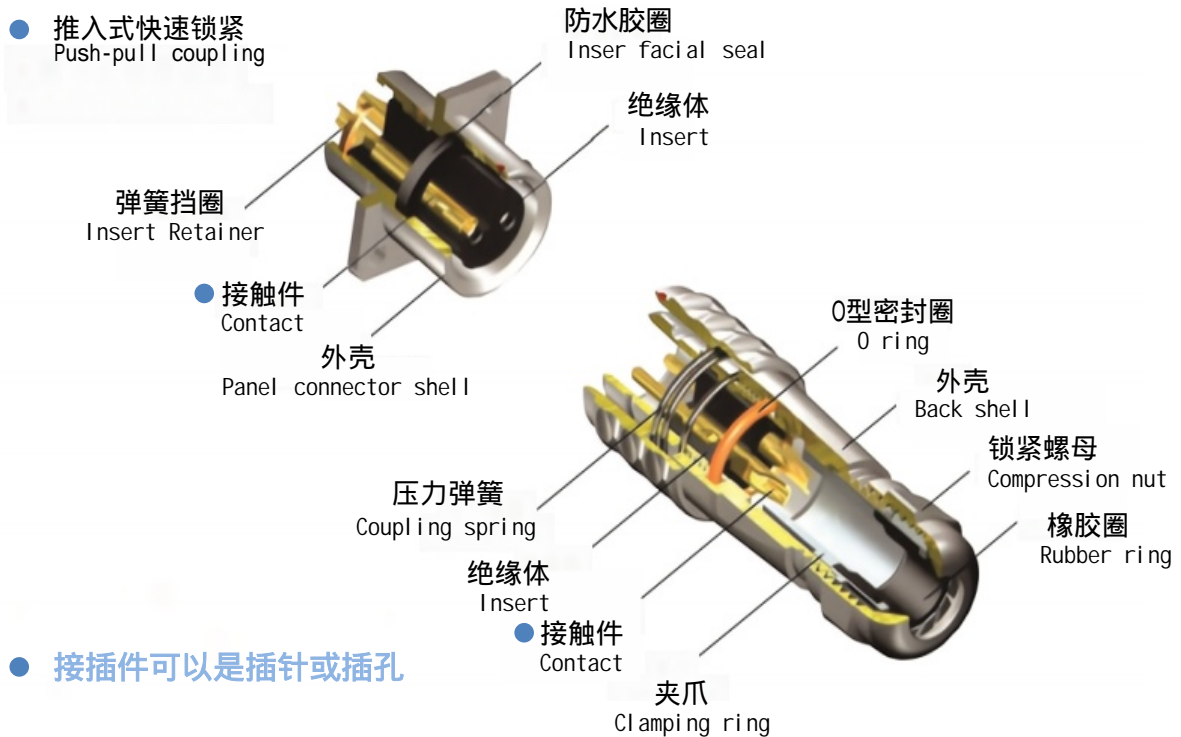




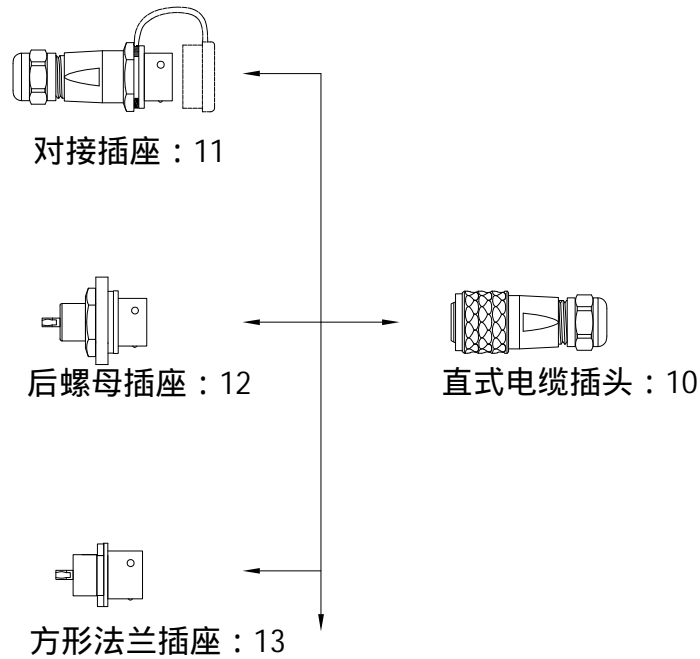
## DF系列



## 材料和技术参数

接插方式	Coupling	推入式快速锁紧	Push-pull
外壳材料	Shell material	锌镀铬	Zinc with chrome plating
绝缘体	Insert material	热塑塑料PPS 耐高温260	PPS max temperature 260
接插件材料	Contact material	铜镀金	Brass with gold plating
防护等级	IP rating	IP67	
接插次数	Mating cycle	1000	
温度范围	Temperature range	-40 ~ +85	
绝缘电阻	Insulation resistance	2000M	

# DF产品系列配型表



## ● DF系列

● 型号范例				
代号	直径12	直式电缆插头	4芯	插针
DF	12	11	4芯	J

### 编码规则：

型号 Partnumbersystem



主称代号  
Seriescode

主插座与面板配合直径  
Panel hole cutout diameter  
6 8 12 16 20 28

外壳结构形式

Shell structure and cable fix type

- 10:直式电缆插头 In-line cable plug
- 11:电缆对接插座 cable for receptacle
- 12:后螺母插座 Round flange receptacle
- 13 :方形法兰插座 Square flange receptacle

接插件种类

Contactgender  
J : 插针 Malecontact  
K : 插座 Femalecontact

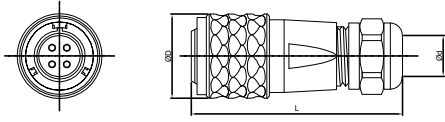
焊接芯数

Number of solder contact

- 2 3 4 5 6 7 8 9 10 12
- 15 16 18 20 24 26 2B
- 3B 4B 6B

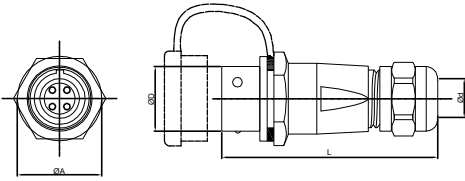
# DF产品结构类型

## 直式电缆插头：10 In-line cable plug: 10



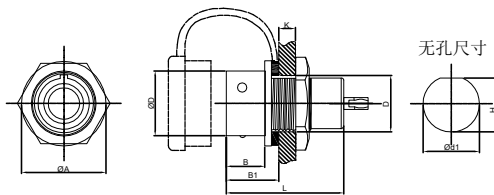
尺寸	DF6	DF8	DF10	DF12	DF16	DF20	DF28
D	11.0	12.5	14.5	17.5	22.5	26.5	34.5
L	30.5	32.5	45.0	46.0	56.0	63.0	67.5
d	I :2-3 II :2-3	I :3-4 II :4-5	I :3-4 II :4-6.5	I :4-6.5 II :5-8	I :5-8 II :8-12	I :5-9 II :8-12	I :13-6

## 电缆对接插座：11 cable for receptacle: 11



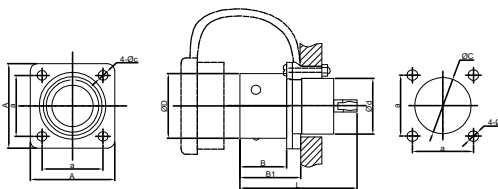
尺寸	DF6	DF8	DF10	DF12	DF16	DF20	DF28
ØA	10.2	12.8	14.8	18.0	23.0	26.8	34.45
ØD	7.9	9.4	11.0	13.8	18.4	21.6	29.8
L	30.5	32.0	46.0	46.0	56.0	64.0	68.35
Ød	I :2-3 II :3-4	I :3-4 II :4-5	I :3-4 II :4-6.5	I :4-6.5 II :5-8	I :5-8 II :8-12	I :5-9 II :8-12	I :13-16

## 后螺母插座：12 Round flange receptacle: 12



尺寸	DF6	DF8	DF10	DF12	DF16	DF20	DF28
ØA	10.2	12.8	14.8	18.0	23.0	26.8	34.45
ØD	7.9	9.4	11.0	13.8	18.4	21.6	29.8
B	5.0	5.0	8.5	8.2	9.8	10.5	10.2
B1	7.3	7.3	11.5	11.2	13.5	14.5	14.2
L	12.9	12.7	19.8	20.0	22.1	23.3	23.7
K	2max	2max	3.5max	3.5max	4max	4.5max	4.5max
D	M6*0.5	M8*0.5	M10*0.75	M12*0.75	M16*0.75	M20*1	M28*1
Ød1	6.0	8.0	10.0	12.0	16.0	20.0	29.0
H	5.7	7.7	9.5	11.5	15.5	19.5	28.5

## 方方法兰插座：13 Square flange receptacle: 13



尺寸	DF12	DF16	DF20	DF28
a	13.0	20.0	22.0	30.0
A	18.0	26.0	29.0	37.0
Øc	2.3	3.2	3.2	3.2
ØD	13.8	18.4	21.6	29.8
B	10.0	9.8	10.5	9.0
B1	13.0	13.5	14.5	12.45
L	20.0	22.1	23.3	23.35
Ød	11.9	15.8	19.8	27.75
ØC	12.0	16.0	20.0	28.0

● 直径和芯数请见第四、五页

# 焊接芯件参数

DF6	2	3	4	5
公端绝缘体正面图 Male contact face view				
额定电流 (A) Rated current(A)	3	3	3	3
接触件直径(mm) Contact diameter(mm)	0.6X2	0.6X3	0.6X4	0.6X5
工作电压(AC.V) Rated voltage (AC.V)	30	30	30	30
耐压(AC.V) 1 min Test voltage(AC.V) 1 min	500	500	500	500
接触电阻(m ) Contact resistance(m )	10	10	10	10
线规(mm2/AWG) Wire size(mm2/AWG)	0.5/20	0.5/20	0.5/20	0.5/20

DF8	2	3	4	6	8
公端绝缘体正面图 Male contact face view					
额定电流 (A) Rated current(A)	5	5	3	3	3
接触件直径(mm) Contact diameter(mm)	1X2	1X3	0.6X4	0.6X6	0.6X8
工作电压(AC.V) Rated voltage (AC.V)	125	125	30	30	30
耐压(AC.V) 1 min Test voltage(AC.V) 1 min	1000	1000	500	500	500
接触电阻(m ) Contact resistance (m )	5	5	10	10	10
线规(mm2/AWG) Wire size(mm2/AWG)	0.72/18	0.72/18	0.5/20	0.5/20	0.5/20

DF10	2	3	4	5
公端绝缘体正面图 Male contact face view				
额定电流 (A) Rated current(A)	5	5	3	3
接触件直径(mm) Contact diameter(mm)	1X2	1X3	0.7X4	0.7X5
工作电压(AC.V) Rated voltage (AC.V)	180	180	125	125
耐压(AC.V) 1 min Test voltage(AC.V) 1 min	1000	1000	1000	1000
接触电阻(m ) Contact resistance (m )	5	5	10	10
线规(mm2/AWG) Wire size(mm2/AWG)	0.75/18	0.75/18	0.5/20	0.5/20

DF12	2	3	4	5	6	7	9
公端绝缘体正面图 Male contact face view							
额定电流 (A) Rated current(A)	13	13	5	5	5	5	3
接触件直径(mm) Contact diameter(mm)	1.6X2	1.6X3	1X4	1X5	1X6	1X7	0.7X9
工作电压(AC.V) Rated voltage (AC.V)	250	250	200	180	125	125	125
耐压(AC.V) 1 min Test voltage(AC.V) 1 min	1500	1500	1500	1000	1000	1000	1000
接触电阻(m ) Contact resistance (m )	2.5	2.5	5	5	5	5	10
线规(mm2/AWG) Wire size(mm2/AWG)	2/14		0.75/18			0.5/20	

DF16	2	3	4	2B	3B	4B	5	7	9	10
公端绝缘体正面图 Male contact face view										
额定电流 (A) Rated current(A)	10	10	5	15	15	15	5	5	5	5
接触件直径(mm) Contact diameter(mm)	1.5X2	1.5X3	1X4	2X2	2X3	2X4	1X5	1X7	1X9	1X10
工作电压 (AC.V) Rated voltage (AC.V)	500	500	500	500	500	500	500	400	400	400
耐压 (AC.V) 1 min Test voltage(AC.V)1min	1500	1500	1500	1500	1500	1500	1500	1200	1200	1200
接触电阻(m ) Contact resistance(m )	2.5	2.5	5	2.5	2.5	2.5	5	5	5	5
线规(mm2/AWG) Wire size(mm2/AWG)	2/14		0.75/18	2/14			0.75/18			

DF20	2	3	4	5	6	6B	7	8	9	12	15
公端绝缘体正面图 Male contact face view											
额定电流 (A) Rated current(A)	25	25	25	10	25 5	30 5	10	10	5	5	5
接触件直径(mm) Contact diameter(mm)	2.5X2	2.5X3	2.5X4	1.5X5	2.5X4 1X2	3X2 1X4	1.5X7	1.5X8	1X9	1X12	1X15
工作电压 (AC.V) Rated voltage (AC.V)	500	500	500	500	500	500	500	500	400	400	400
耐压 (AC.V) 1 min Test voltage(AC.V)1min	1500	1500	1500	1500	1500	1500	1500	1500	1200	1200	1200
接触电阻(m ) Contact resistance(m )	1	1	1	2.5	1 5	1 5	2.5	2.5	5	5	5
接线方式 Termination	焊接/螺丝压接				焊接						
焊线线规(mm2/AWG) Wire size for solder (mm2/AWG)	2/11			2/14	2/14 0.75/18		2/14		0.75/18		
螺丝压接线规(mm2/AWG) Wire size for screw termination(mm2/AWG)	1.5/15			/							

DF28	3	4	5	7	10	12	16	18	20	24	26
公端绝缘体正面图 Male contact face view											
额定电流 (A) Rated current(A)	50	25	25	25	25	10	10	10	5	5	5
接触件直径(mm) Contact diameter(mm)	3.5X3	2.5X4	2.5X5	2.5X7	2.5X10	1.5X12	1.5X16	1.5X18	1X20	1X24	1X26
工作电压 (AC.V) Rated voltage (AC.V)	500	500	500	500	500	500	500	500	400	400	400
耐压 (AC.V) 1 min Test voltage(AC.V)1min	1500	1500	1500	1500	1500	1500	1500	1500	1200	1200	1200
接触电阻(m ) Contact resistance(m )	0.5	1	1	1	1	2.5	2.5	2.5	5	5	5
焊线线规(mm2/AWG) Wire size for solder (mm2/AWG)	4/11					2/14			0.75/18		