

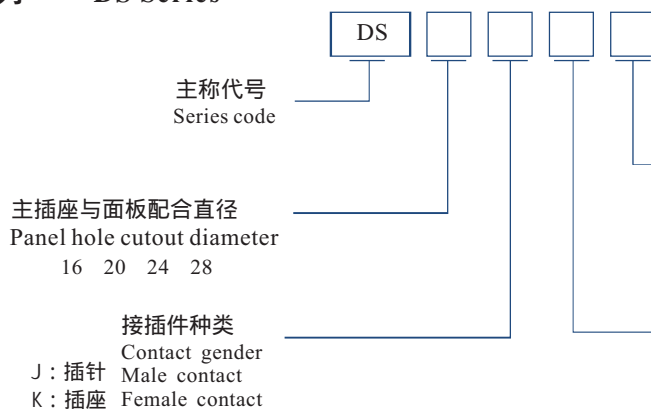


DS series

● **DS系列**

DS Series

型号 Part number system



● **型号范例**

代号	直径16	插针	4芯	直式电缆护套插头
DS	16	J	4	TQ

外壳结构形式

Shell structure and cable fix type

Z: 方形法兰插座 Square flange receptacle

TQ: 直式电缆护套插头 Plug with PVC sleeve

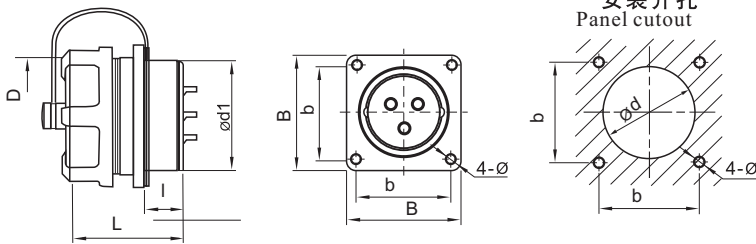
焊接芯数

Number of solder contact

2、3、4、5、6、7、8、9、10、11、
12、13、15、16、17、19、20、24、
26、27、31、35、38、40、42、53、61

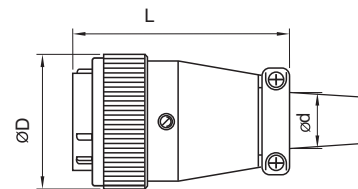
● **方形法兰插座: Z**

Square flange mount receptacle: Z



尺寸 Dimension(mm)	DS16	DS20	DS24	DS28
ød1	15.8	19.8	23.8	27.8
D	M18X1	M22X1	M26X1	M30X1
I	9.7	10	10	10
L	21.6	23	23	23
b	20	22	26	30
B	26	29	32	36
ød	16.5	20.5	24.5	28.5
ø	3.2	3.2	3.2	3.2

● **直式电缆护套插头: TQ**
Plug with PVC sleeve: TQ



尺寸	DS16	DS20	DS24	DS28
øD	21.5	26	30	34
L	44	49	53	55
ød max	10.5	13	13.5	17.5

● 接插件可以是插针或插孔

● 直径和芯数请见第二页

材料和技术参数 Material and spec

接插方式	Coupling	螺纹连接	Threaded
外壳材料	Shell material	锌合金 (镀铬)	Zin calloy with chrome plating
绝缘体	Insert material	热塑塑料PPS, 耐高温260	PPS,max temperature 260
接插件材料	Contact material	铜 (镀金)	Brasswithgoldplating
接线方式	Termination	焊接: 1、 1.5、 2.5 3.5、 5.5	Solder: 1, 1.5, 2.5, 3.5, 5.5mm
接插次数	Mating cycle	500	
温度范围	Temperature range	-40 ~+85	

焊接芯件参数表 Solder contact spec

DS16	2	3	4	5	7	9	10
公端绝缘体正面图 Male contact face view							
额定电流 (A) Rated current (A)	10	10	5	5	5	5	5
接触件直径(mm) Contact diameter(mm)	∅1.5X2	∅1.5X3	∅1X4	∅1X5	∅1X7	∅1X9	∅1X10
工作电压 (AC.V) Rated voltage (AC.V)	500	500	500	500	400	400	400
耐压 (AC.V) 1 min Test voltage(AC.V) 1 min	1500	1500	1500	1500	1200	1200	1200
接触电阻 (mΩ) Contact resistance(mΩ)	2.5	2.5	5	5	5	5	5
绝缘电阻 (MΩ) Insulation resistance (MΩ)	2000	2000	2000	2000	2000	2000	2000
线规 (mm²/AWG) Wire size (mm²/AWG)	≤2/14	≤2/14	≤0.75/18	≤0.75/18	≤0.75/18	≤0.75/18	≤0.75/18

DS20	2	3	4	5	6	7	8	9	12	15
公端绝缘体正面图 Male contact face view										
额定电流 (A) Rated current (A)	25	25	25	10	5 25	10	10	5	5	5
接触件直径(mm) Contact diameter(mm)	∅2.5X2	∅2.5X3	∅2.5X4	∅1.5X5	∅1X2 ∅2.5X4	∅1.5X7	∅1.5X8	∅1X9	∅1X12	∅1X15
工作电压 (AC.V) Rated voltage (AC.V)	500	500	500	500	500	500	500	400	400	400
耐压 (AC.V) 1 min Test voltage(AC.V) 1 min	1500	1500	1500	1500	1500	1500	1500	1200	1200	1200
接触电阻 (mΩ) Contact resistance(mΩ)	1	1	1	2.5	5 1	2.5	2.5	5	5	5
绝缘电阻 (MΩ) Insulation resistance (MΩ)	2000	2000	2000	2000	2000	2000	2000	2000	2000	2000
线规 (mm²/AWG) Wire size (mm²/AWG)	≤4/11	≤4/11	≤4/11	≤2/14	≤0.75/18 ≤4/11	≤2/14	≤2/14	≤0.75/18	≤0.75/18	≤0.75/18

DS24	2	3	4	9	10	12	19
公端绝缘体正面图 Male contact face view							
额定电流 (A) Rated current (A)	25	25	25	5 25	10	10	5
接触件直径(mm) Contact diameter(mm)	∅2.5X2	∅2.5X3	∅2.5X4	∅1X5 ∅2.5X4	∅1.5X10	∅1.5X12	∅1X19
工作电压 (AC.V) Rated voltage (AC.V)	500	500	500	500	500	500	400
耐压 (AC.V) 1 min Test voltage(AC.V) 1 min	1500	1500	1500	1500	1500	1500	1200
接触电阻 (mΩ) Contact resistance(mΩ)	1	1	1	5 1	2.5	2.5	5
绝缘电阻 (MΩ) Insulation resistance (MΩ)	2000	2000	2000	2000	2000	2000	2000
线规 (mm²/AWG) Wire size (mm²/AWG)	≤4/11	≤4/11	≤4/11	≤0.75/18 ≤4/11	≤2/14	≤2/14	≤0.75/18

DS28	2	3	4	7	8	9	10	12	16	17	20	24	26	35
公端绝缘体正面图 Male contact face view														
额定电流 (A) Rated current (A)	50	50	25	25	25	25.5	25	10	10	10	5	5	5	5
接触件直径(mm) Contact diameter(mm)	∅3.5X2	∅3.5X3	∅2.5X4	∅2.5X7	∅2.5X8	∅2.5X4 ∅1X5	∅2.5X10	∅1.5X12	∅1.5X16	∅1.5X17	∅1X20	∅1X24	∅1X26	∅1X35
工作电压 (AC.V) Rated voltage (AC.V)	500	500	500	500	500	500	500	500	500	500	400	400	400	400
耐压 (AC.V) 1 min Test voltage(AC.V) 1 min	1500	1500	1500	1500	1500	1500	1500	1500	1500	1500	1200	1200	1200	1200
接触电阻 (mΩ) Contact resistance(mΩ)	0.5	0.5	1	1	1	1.5	1	2.5	2.5	2.5	5	5	5	5
绝缘电阻 (MΩ) Insulation resistance (MΩ)	2000	2000	2000	2000	2000	2000	2000	2000	2000	2000	2000	2000	2000	2000
线规 (mm²/AWG) Wire size (mm²/AWG)	≤10/7	≤10/7	≤4/11	≤4/11	≤4/11	≤4/11 ≤0.75/18	≤4/11	≤2/14	≤2/14	≤2/14	≤0.75/18	≤0.75/18	≤0.75/18	≤0.75/18