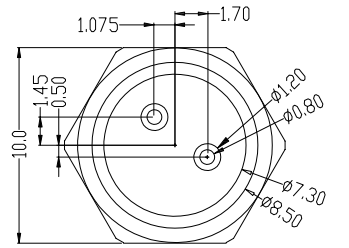
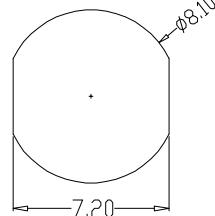
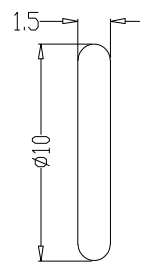
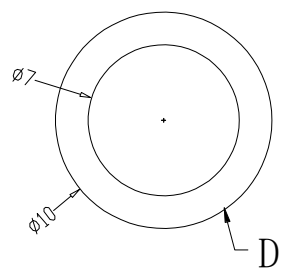
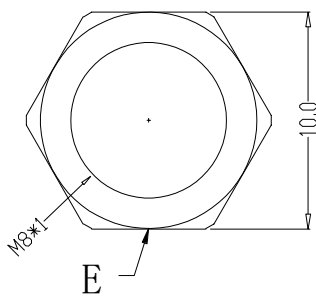
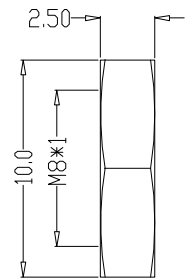
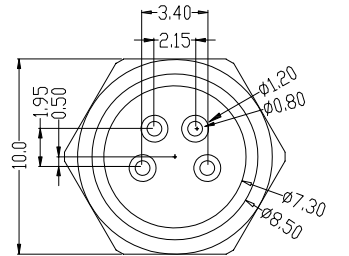
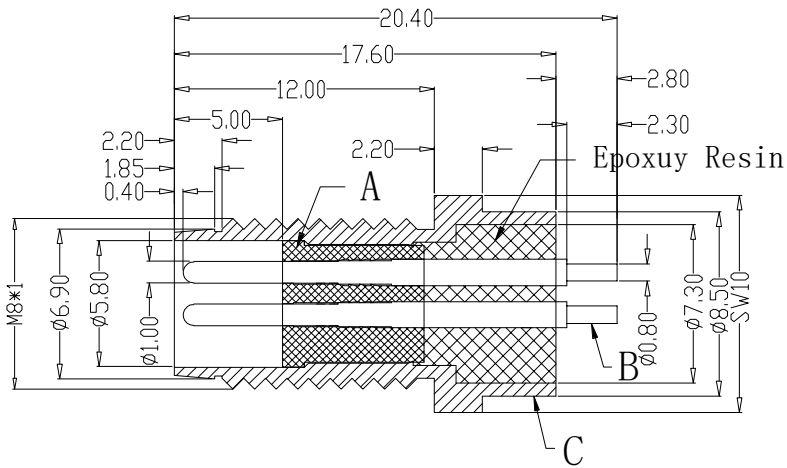
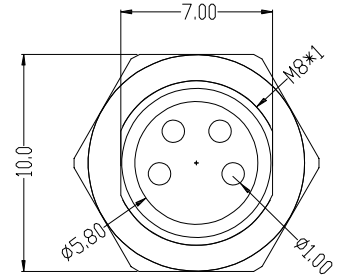
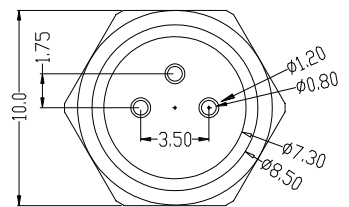
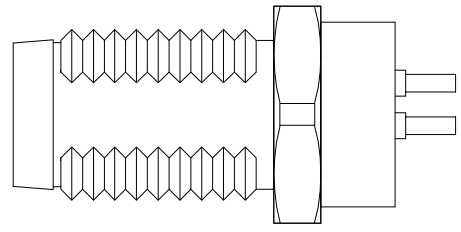


The product using material and processing must conform to the "WL-PZ-001"HSF technical standard control requirements

RoHS

	2pin	3pin	4pin
图形			
CODE	A-code	A-code	A-code



Recommended Panel Cut-out

P/N	TITLE	Engagemnr firce	≤30N	Rated volage	60v	PARTS	MARERIALS	TREATMENT	AMOUNT	
M08A02-03-031	M8防水 A-CODE 2P板端公头 前锁面板式M8 SW10-17.6全金属	Disengagement force	≥5N	Rated current	4A	A	HOUSING	PA66+GF	SPECIFY COLOR	1
M08A03-03-031	M8防水 A-CODE 3P板端公头 前锁面板式M8 SW10-17.6全金属	Mechanical lifespan	≥500	Insulation resistance	≥1000MΩ	B	CONTACT	BRASS	GOLD PLATED	2~4
M08A04-03-031	M8防水 A-CODE 4P板端公头 前锁面板式M8 SW10-17.6全金属	IP rating	IP67/IP68	Conract resistange	≤10MΩ	C	OUTER CONTACT	BRASS	NICKL PLATED	1
		Flammability	UL94 V-0	Operation Temperature	-40° C~105° C	D	O-RING	EPDM	BLACK	1
						E	NUT	BRASS	NICKL PLATED	1

REV.	REVISION RECORD	DATE	GENERAL TOLERANCES		SCALE:	NAME	DATE	PART.NO:	DWG.NO:	WanLian Technology Co., Ltd	
A0	NEW RELEASE	21.11.17	LINEAR	ANGLES	1:1						
			0.0±0.35	X'REF±6'	APPROVED			M08XXX-03-031	ENDE05		
			0.00±0.25	X'±3'	DESIGNER			TITLE:			
			0.000±0.10	X'X' ±2'	DRAWN			M8防水 2~4P板端前锁面板式M8 SW10-17.6全金属			
										REV: A0	SHEET: 1/1