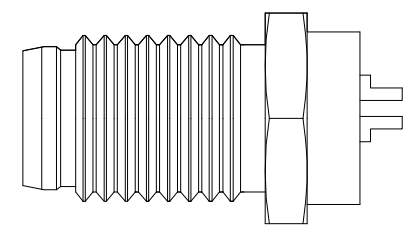
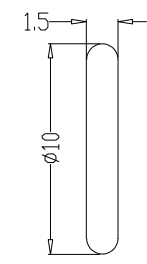
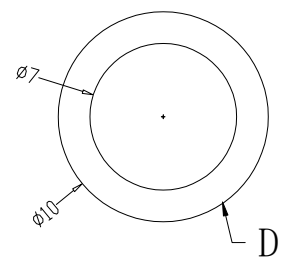
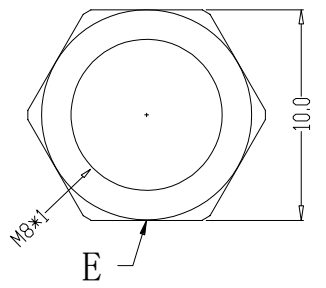
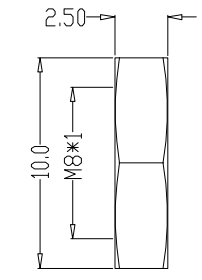
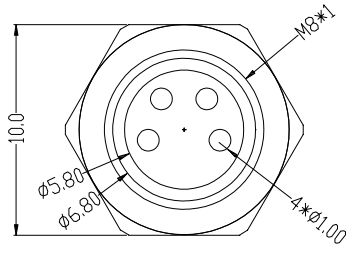
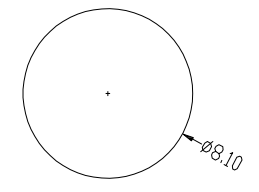
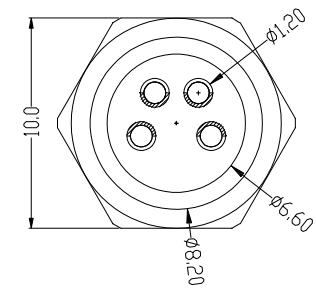
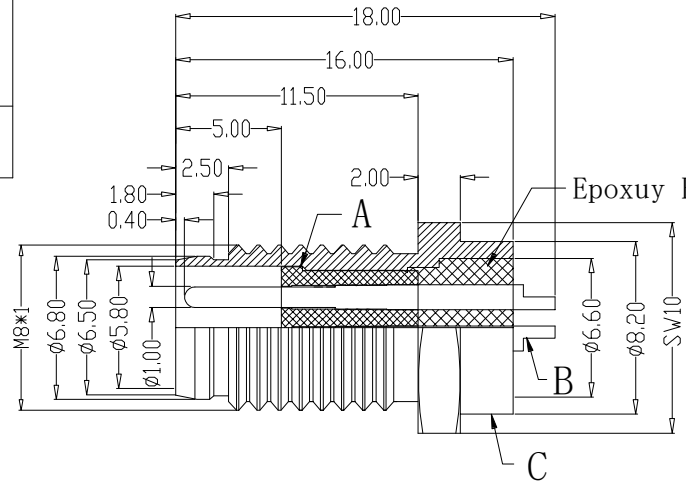


The product using material and processing must conform to the "WL-PZ-001"HSF technical standard control requirements

RoHS

|      |        |        |        |
|------|--------|--------|--------|
|      | 2pin   | 3pin   | 4pin   |
| 图形   |        |        |        |
| CODE | A-code | A-code | A-code |



| P/N           | TITLE                                  | Engagemnr firce     | ≤30N      | Rated volage          | 60v           | PARTS | MARERIALS     | TREATMENT | AMOUNT        |     |
|---------------|--|---------------------|-----------|-----------------------|---------------|-------|---------------|-----------|---------------|-----|
| M08A02-03-032 | M8防水 A-CODE 2P线端公头 前锁面板式M8 SW10-16L全金属 | Disengagement force | ≥5N       | Rated current         | 4A            | A     | HOUSING       | PA66+GF   | SPECIFY COLOR | 1   |
| M08A03-03-032 | M8防水 A-CODE 3P线端公头 前锁面板式M8 SW10-16L全金属 | Mechanical lifespan | ≥500      | Insulation resirance  | ≥1000MΩ       | B     | CONTACT       | BRASS     | GOLD PLATED   | 2~4 |
| M08A04-03-032 | M8防水 A-CODE 4P线端公头 前锁面板式M8 SW10-16L全金属 | IP rating           | IP67/IP68 | Conract resistangce   | ≤10MΩ         | C     | OUTER CONTACT | BRASS     | NICKL PLATED  | 1   |
|               |  | Flammability        | UL94 V-0  | Operation Temperature | -40° C~105° C | D     | O-RING        | EPDM      | BLACK         | 1   |
|               |  |                     |           |                       |               | E     | NUT           | BRASS     | NICKL PLATED  | 1   |

|      |                 |          |                    |            |      |      |                                  |         |
|------|-----------------|----------|--------------------|------------|------|------|----------------------------------|---------|
| REV. | REVISION RECORD | DATE     | GENERAL TOLERANCES | SCALE: 1:1 | NAME | DATE | PART.NO:                         | DWG.NO: |
| A0   | NEW RELEASE     | 21.11.17 | LINEAR             | APPROVED   |      |      | M08XXX-03-032                    | ENDE05  |
|      |                 |          | ANGLES             | DESIGNER   |      |      | TITLE:                           |         |
|      |                 |          | 0.0±0.35           | DRAWN      |      |      | M8防水 2~4P线端公头 前锁面板式M8 SW10-16全金属 |         |
|      |                 |          | 0.00±0.25          |            |      |      |                                  |         |
|      |                 |          | 0.000±0.10         |            |      |      |                                  |         |
|      |                 |          | UNIT:mm            |            |      |      |                                  |         |
|      |                 |          | SIZE: A4           |            |      |      |                                  |         |



REV: A0 SHEET: 1/1