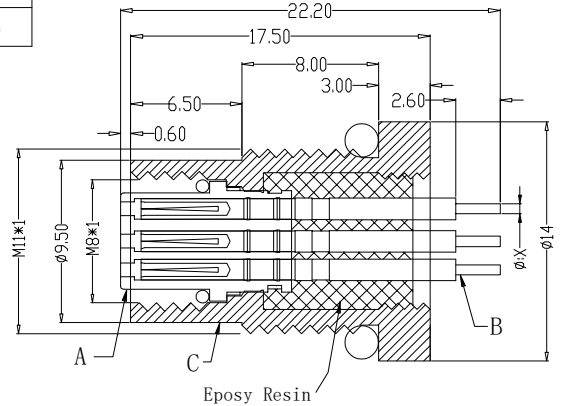
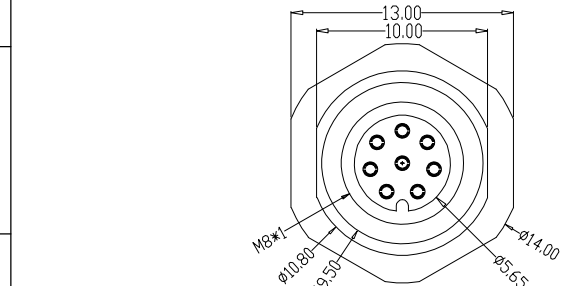
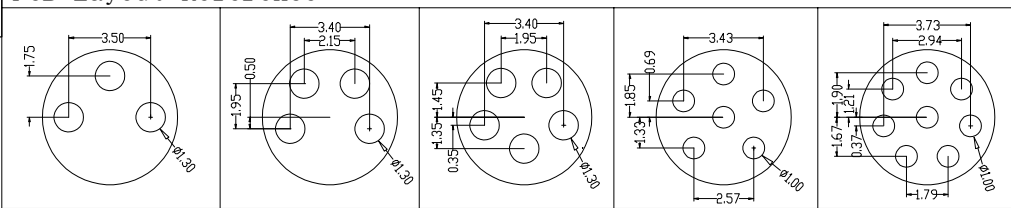


The product using material and processing must conform to the "WL-PZ-001"HSF technical standard control requirements

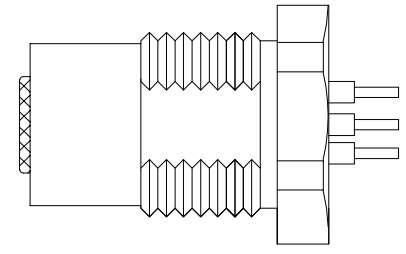
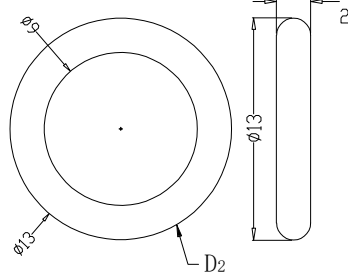
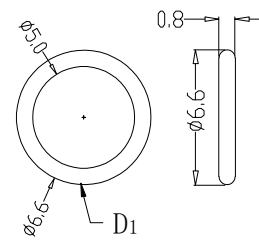
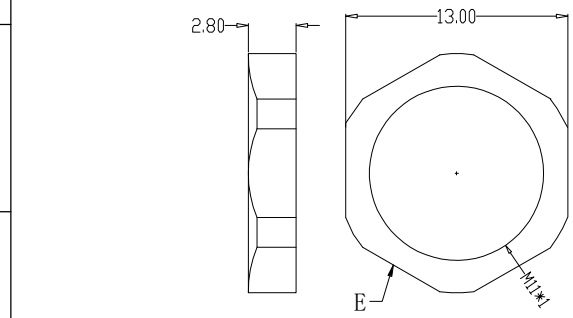
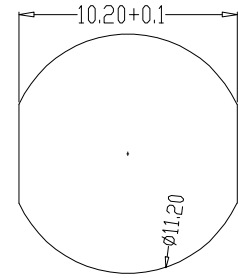
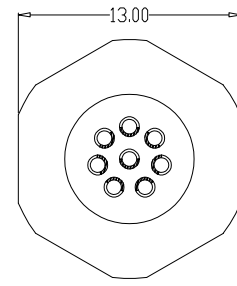
PCB Layout Reference



图形						
CODE	A-code	A-code	A-code	B-code	A-code	A-code
X值	1.00	1.00	1.00	1.00	0.60	0.60



Recommended Panel Cut-out



P/N	TITLE	Engagemnr firce	≤50N	Rated voltage	2-5pin:60v DC 6-8PIN:30V DC	A	HOUSING	MARERIALS	PA66+GF	TREATMENT	SPECIFY COLOR	AMOUNT	1
M08A02-04-028	M8防水 A-CODE 2P 线端母座 前锁面板式M11 SW13T 22. 2L	Disengagement force	≥5N	Rated current	2-5pin:4A 6-8PIN:2A	B	CONTACT	BRASS	GOLD PLATED			2~8	
M08A03-04-028	M8防水 A-CODE 3P 线端母座 前锁面板式M11 SW13T 22. 2L	Mechanical lifespan	≥500	Insulation resistance	≥1000MΩ	C	SHIELD	BRASS	NICKL PLATED			1	
M08A04-04-028	M8防水 A-CODE 4P 线端母座 前锁面板式M11 SW13T 22. 2L	IP rating	IP67/IP68	Conract resistance	≤10MΩ	D	O-RING	EPDM	BLACK			2	
M08B05-04-028	M8防水 B-CODE 5P 线端母座 前锁面板式M11 SW13T 22. 2L	Flammability	UL94 V-0	Operation Temperature	-40° C~105° C	E	NUT	BRASS	NICKL PLATED			1	
M08A06-04-028	M8防水 A-CODE 6P 线端母座 前锁面板式M11 SW13T 22. 2L												
M08A08-04-028	M8防水 A-CODE 8P 线端母座 前锁面板式M11 SW13T 22. 2L												

REV.	REVISION RECORD	DATE		GENERAL TOLERANCES		SCALE: 1:1	NAME	DATE	PART.NO: M08XXX-04-028	DWG.NO: ENDE05	 WanLian Technology Co., Ltd
A0	NEW RELEASE	21.11.17		LINEAR	ANGLES						
			UNIT:mm	0.00±0.25	X'±3'	DESIGNER					
			SIZE: A4	0.000±0.10	X'X' ±2'	DRAWN					