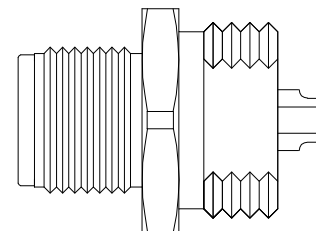
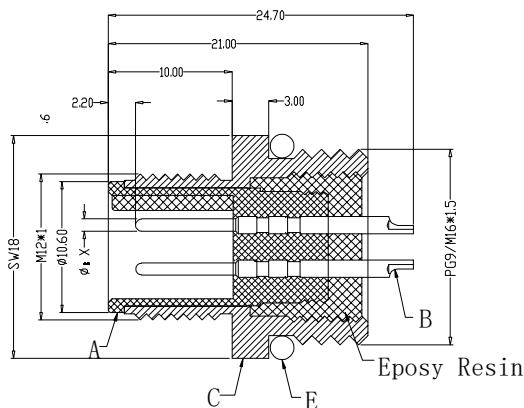
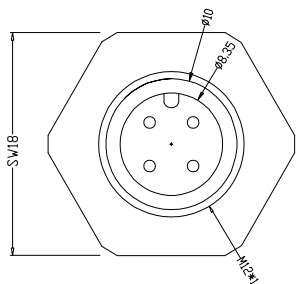


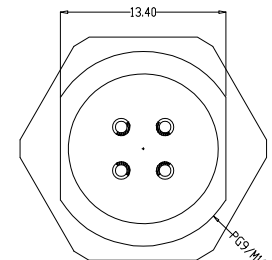
The product using material and processing must conform to the "WL-PZ-001"HSF technical standard requirements

RoHS

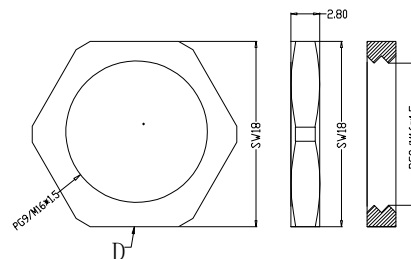
PIN位	2pin	3pin	4pin	5pin	6pin	7pin	8pin
X 值	1.00	1.00	1.00	1.00	0.80	0.80	0.80
A-CODE 图形							
B-CODE 图形							
D-CODE 图形							



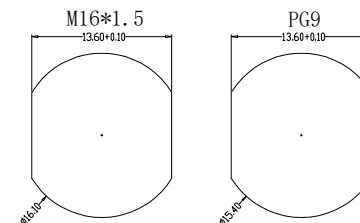
组合图



P/N	TITLE
M12A02-03-095	M12防水 A-CODE 2P线端公头 后锁面板式 PG9/M16 SW18T
M12A03-03-095	M12防水 A-CODE 3P线端公头 后锁面板式 PG9/M16 SW18T
M12A04-03-095	M12防水 A-CODE 4P线端公头 后锁面板式 PG9/M16 SW18T
M12A05-03-095	M12防水 A-CODE 5P线端公头 后锁面板式 PG9/M16 SW18T
M12A06-03-095	M12防水 A-CODE 6P线端公头 后锁面板式 PG9/M16 SW18T
M12A07-03-095	M12防水 A-CODE 7P线端公头 后锁面板式 PG9/M16 SW18T
M12A08-03-095	M12防水 A-CODE 8P线端公头 后锁面板式 PG9/M16 SW18T
M12B02-03-095	M12防水 B-CODE 2P线端公头 后锁面板式 PG9/M16 SW18T
M12B03-03-095	M12防水 B-CODE 3P线端公头 后锁面板式 PG9/M16 SW18T
M12B04-03-095	M12防水 B-CODE 4P线端公头 后锁面板式 PG9/M16 SW18T
M12B05-03-095	M12防水 B-CODE 5P线端公头 后锁面板式 PG9/M16 SW18T
M12D02-03-095	M12防水 D-CODE 2P线端公头 后锁面板式 PG9/M16 SW18T
M12D03-03-095	M12防水 D-CODE 3P线端公头 后锁面板式 PG9/M16 SW18T
M12D04-03-095	M12防水 D-CODE 4P线端公头 后锁面板式 PG9/M16 SW18T



Recommended Panel Cut-out



Engagemer firce	≤50N	Rated voltage	2-5pin:60v 6-8PIN:30V	PARTS	MARERIALS	TREATMENT	AMOUNT	
Disengagement force	≥5N	Rated current	2-5pin:4A 6-8PIN:2A					
Mechanical lifespan	≥500	Insulation resirance	≥1000MΩ	A	HOUSING	PA66+GF	SPECIFY COLOR	1
IP rating	IP67/IP68	Conract resistangce	≤10MΩ	B	CONTACT	BRASS	GOLD PLATED	2~8
Flammability	UL94 V-0	Operation Temperature	-40° C~105° C	C	OUTER CONTACT	BRASS	NICKL PLATED	1
				D	NUT	BRASS	NICKL PLATED	1
				E	O-RING	EPDM	BLACK	1

REV.	REVISION RECORD	DATE	GENERAL TOLERANCES	SCALE:	NAME	DATE	PART.NO:	DWG.NO:	WanLian Technology Co., Ltd
AO	NEW RELEASE			1:1					
			LINEAR	ANGLES	APPROVED		M12XXX-03-095	ENDE05	
			0.0±0.35	X'REF±6'	DESIGNER		TITLE:		
			UNIT:mm	0.00±0.25	X'±3'		M12防水 线端公头 后锁面板式 PG9/M16 SW18T	REV: AO	
			SIZE: A4	0.000±0.10	X'X' ±2'	DRAWN			