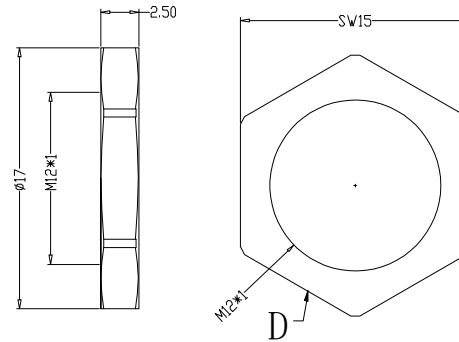
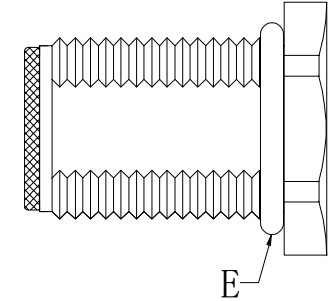
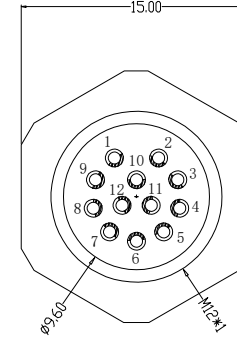
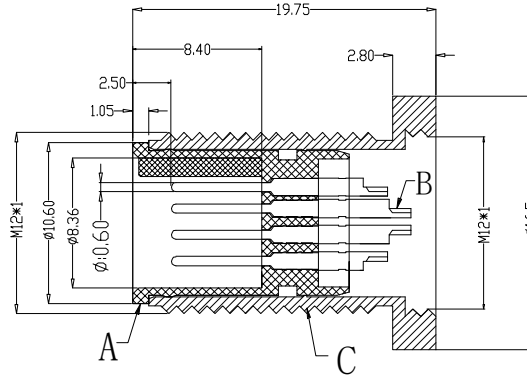
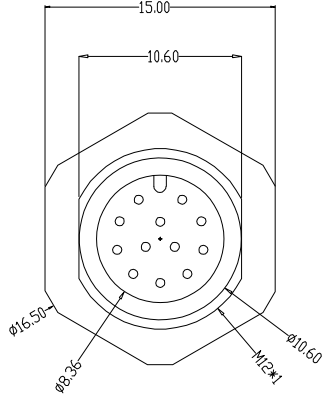
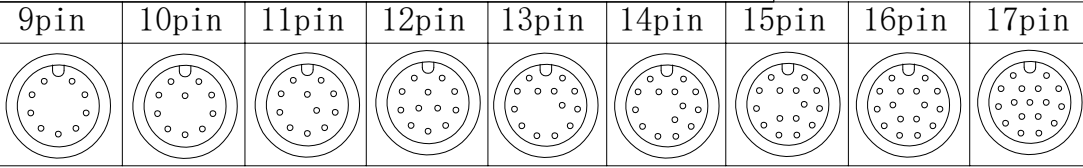
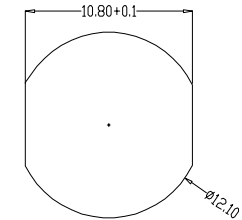


The product using material and processing must conform to the "WL-PZ-001"HSF technical standard control requirements

RoHS



Recommended Panel Cut-out



| P/N | TITLE |
|---------------|--|
| M12A09-03-107 | M12防水 A-CODE 09P线端公头 前锁面板式M12 SW15T后灌胶 |
| M12A10-03-107 | M12防水 A-CODE 10P线端公头 前锁面板式M12 SW15T后灌胶 |
| M12A11-03-107 | M12防水 A-CODE 11P线端公头 前锁面板式M12 SW15T后灌胶 |
| M12A12-03-107 | M12防水 A-CODE 12P线端公头 前锁面板式M12 SW15T后灌胶 |
| M12A13-03-107 | M12防水 A-CODE 13P线端公头 前锁面板式M12 SW15T后灌胶 |
| M12A14-03-107 | M12防水 A-CODE 14P线端公头 前锁面板式M12 SW15T后灌胶 |
| M12A15-03-107 | M12防水 A-CODE 15P线端公头 前锁面板式M12 SW15T后灌胶 |
| M12A16-03-107 | M12防水 A-CODE 16P线端公头 前锁面板式M12 SW15T后灌胶 |
| M12A17-03-107 | M12防水 A-CODE 17P线端公头 前锁面板式M12 SW15T后灌胶 |

| | | | | | | | | |
|---------------------|-----------|-----------------------|---------------|---|---------------|-----------|---------------|--------|
| Engagemer force | ≤50N | Rated volage | 30V DC | | PARTS | MARERIALS | TREATMENT | AMOUNT |
| Disengagement force | ≥10N | Rated current | 1.5A | A | HOUSING | PA66+GF | SPECIFY COLOR | 1 |
| Mechanical lifespan | ≥500 | Insulation resistance | ≥1000MΩ | B | CONTACT | BRASS | GOLD PLATED | 9~17 |
| IP rating | IP67/IP68 | Conract resistangce | ≤10MΩ | C | OUTER CONTACT | BRASS | NICKL PLATED | 1 |
| Flammability | UL94 V-0 | Operation Temperature | -40° C~105° C | D | NUT | BRASS | NICKL PLATED | 1 |
| | | | | E | O-RING | EPDM | BLACK | 1 |

| REV. | REVISION RECORD | DATE | GENERAL TOLERANCES | SCALE: | NAME | DATE | PART.NO: | DWG.NO: |
|------|-----------------|----------|--------------------|----------|------|------|----------------------------------|------------|
| A0 | NEW RELEASE | 21.11.17 | LINEAR | 1:1 | | | M12XXX-03-107 | ENDE05 |
| | | | ANGLES | APPROVED | | | | |
| | | | 0.0±0.35 | DESIGNER | | | | |
| | | | X°REF±6' | DRAWN | | | | |
| | | | UNIT:mm | | | | TITLE: | |
| | | | 0.00±0.25 | | | | M12防水 9~17P线端公头 前锁板式M12 SW15T后灌胶 | |
| | | | X°±3' | | | | | REV: A0 |
| | | | 0.000±0.10 | | | | | SHEET: 1/1 |
| | | | X°X' ±2' | | | | | |



WanLian Technology Co., Ltd