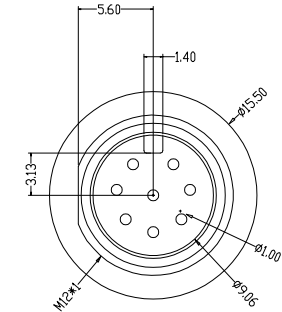
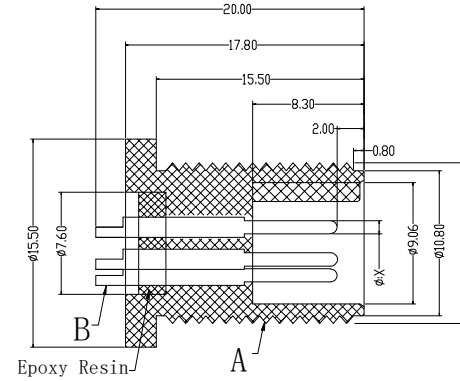
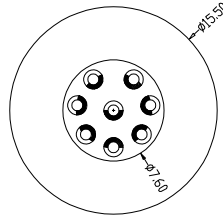
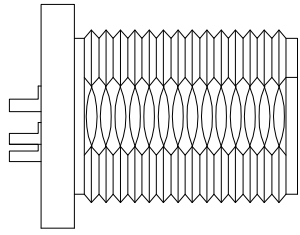


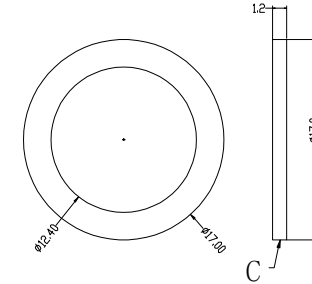
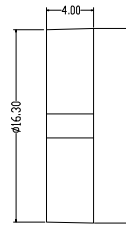
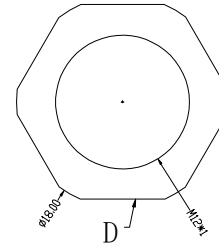
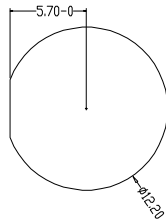
The product using material and processing must conform to the "WL-PZ-001" HSF technical standard control requirements

RoHS

PIN位	2PIN	3PIN	4PIN	5PIN	6PIN	7PIN	8PIN
X值	1.50	1.00	1.00	1.00	1.00	1.00	1.00
图形							



Recommended Panel Cut-out



P/N	TITLE
M12Y02-03-141	M12防水 2P线端公头 Y-CODE 前锁面板式Y-AXCJ款
M12Y03-03-141	M12防水 3P线端公头 Y-CODE 前锁面板式Y-AXCJ款
M12Y04-03-141	M12防水 4P线端公头 Y-CODE 前锁面板式Y-AXCJ款
M12Y05-03-141	M12防水 5P线端公头 Y-CODE 前锁面板式Y-AXCJ款
M12Y06-03-141	M12防水 6P线端公头 Y-CODE 前锁面板式Y-AXCJ款
M12Y07-03-141	M12防水 7P线端公头 Y-CODE 前锁面板式Y-AXCJ款
M12Y08-03-141	M12防水 8P线端公头 Y-CODE 前锁面板式Y-AXCJ款

Engagemnr firce	$\leq 50N$	Rated volage	2-5pin:60v 6-8PIN:30V
Disengagement force	$\geq 5N$	Rated current	2pin:7.5A 3-8PIN:2A
Mechanical lifespan	$\geq 500$	Insulation resistance	$\geq 1000M\Omega$
IP rating	IP67/IP68	Conract resistangce	$\leq 10M\Omega$
Flammability	UL94 V-0	Operation Temperature	$-40^{\circ}C \sim 105^{\circ}C$

	PARTS	MARERIALS	TREATMENT	AMOUNT
A	HOUSING	PA66+GF	SPECIFY COLOR	1
B	CONTACT	BRASS	GOLD PLATED	2~8
C	OUTER CONTACT	BRASS	NICKL PLATED	1
D	NUT	BRASS	NICKL PLATED	1
E	O-RING	EPDM	BLACK	1

REV.	REVISION RECORD	DATE	UNIT: mm	GENERAL TOLERANCES	SCALE: 1:1	NAME	DATE	PART.NO:	DWG.NO:
A0	NEW RELEASE	21.11.17		LINEAR: 0.0±0.35 ANGLES: X'REF±6°	APPROVED			M12XXX-03-141	ENDE05
				0.00±0.25 X'±3°	DESIGNER			TITLE:	
			SIZE: A4	0.000±0.10 X'X' ±2°	DRAWN			M12防水 2~8P线端公头 Y-CODE 前锁面板式Y-AXCJ款	REV: A0 SHEET: .

