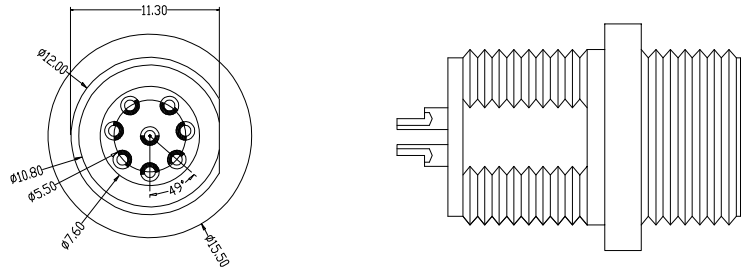


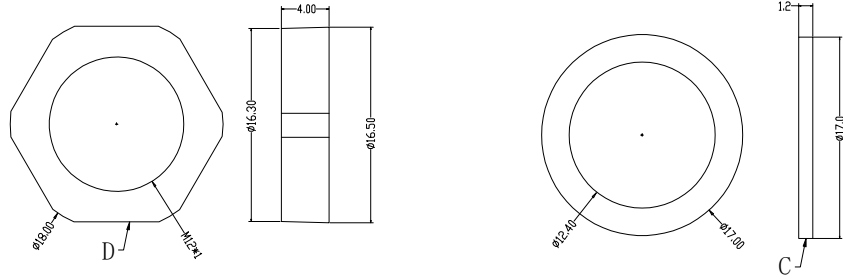
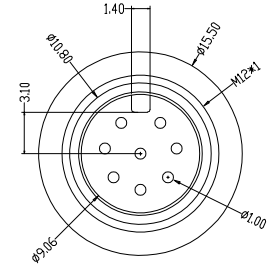
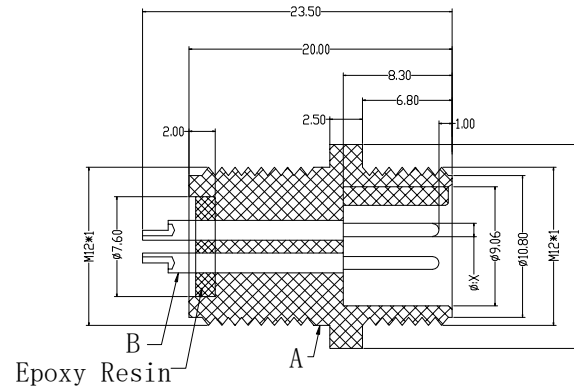
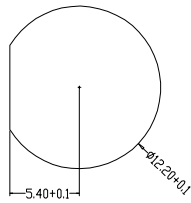
The product using material and processing must conform to the "WL-PZ-001" HSF technical standard control requirements



PIN位	2PIN	3PIN	4PIN	5PIN	6PIN	7PIN	8PIN
X值	1.50	1.00	1.00	1.00	1.00	1.00	1.00
图形							



Recommended Panel Cut-out



P/N	TITLE
M12Y02-03-142	M12防水 Y-CODE 2P线端公头 后锁面板式 Y-CJ款
M12Y03-03-142	M12防水 Y-CODE 3P线端公头 后锁面板式 Y-CJ款
M12Y04-03-142	M12防水 Y-CODE 4P线端公头 后锁面板式 Y-CJ款
M12Y05-03-142	M12防水 Y-CODE 5P线端公头 后锁面板式 Y-CJ款
M12Y06-03-142	M12防水 Y-CODE 6P线端公头 后锁面板式 Y-CJ款
M12Y07-03-142	M12防水 Y-CODE 7P线端公头 后锁面板式 Y-CJ款
M12Y08-03-142	M12防水 Y-CODE 8P线端公头 后锁面板式 Y-CJ款

Engagemnr firce	≤50N	Rated voltage	2-5pin:60v 6-8PIN:30V	PARTS	MARERIALS	TREATMENT	AMOUNT
Disengagement force	≥5N	Rated current	2pin:7.5A 3-8PIN:4A				
Mechanical lifespan	≥500	Insulation resirance	≥1000MΩ				
IP rating	IP67/IP68	Conract resistangce	≤10MΩ				
Flammability	UL94 V-0	Operation Temperature	-40° C~105° C				
A	HOUSING	PA66+GF	SPECIFY COLOR	1			
B	CONTACT	BRASS	GOLD PLATED	2~8			
C	SHIM	SILICA GEL	BLACK	1			
D	NUT	PA66+GF	BLACK	1			

REV.	REVISION RECORD	DATE	GENERAL TOLERANCES	SCALE:	NAME	DATE	PART.NO:	DWG.NO:
A0	NEW RELEASE	21.11.17	LINEAR	1:1			M12XXX-03-142	ENDE05
			ANGLES					
			0.0±0.35					
			X'REF±6'					
			UNIT:mm				TITLE:	
			0.00±0.25				M12防水 2~8P线端公头 Y-CODE 后锁面板式 Y-CJ款	
			X'±3'					
			SIZE: A4					
			0.000±0.10					
			X'X' ±2'					



REV: A0 SHEET: 1/1