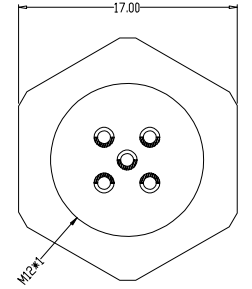
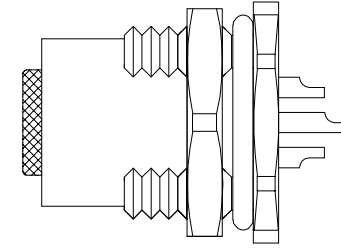
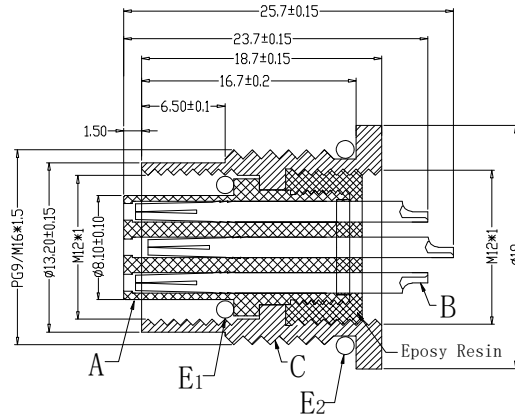
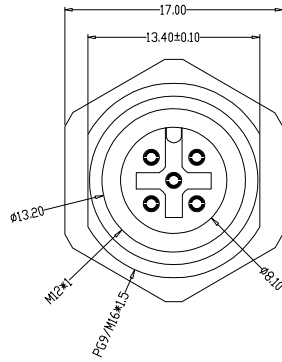
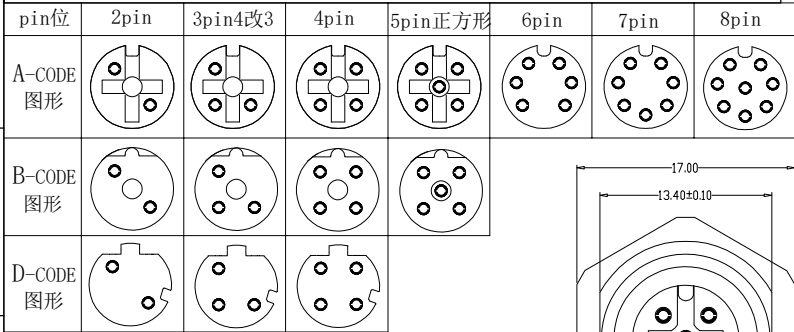




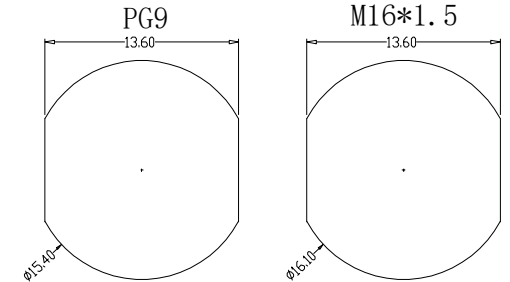
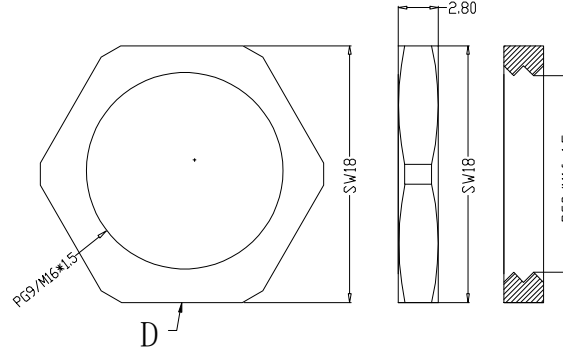
The product using material and processing must conform to the "WL-PZ-001" HSF technical standard requirements



组合图

Recommended Panel Cut-out

P/N	TITLE
M12A02-04-096	M12防水 A-CODE 2P线端母头 前锁面板式PG9/M16 SW17T
M12A03-04-096	M12防水 A-CODE 3P线端母头 前锁面板式PG9/M16 SW17T
M12A04-04-096	M12防水 A-CODE 4P线端母头 前锁面板式PG9/M16 SW17T
M12A05-04-096	M12防水 A-CODE 5P线端母头 前锁面板式PG9/M16 SW17T
M12A06-04-096	M12防水 A-CODE 6P线端母头 前锁面板式PG9/M16 SW17T
M12A07-04-096	M12防水 A-CODE 7P线端母头 前锁面板式PG9/M16 SW17T
M12A08-04-096	M12防水 A-CODE 8P线端母头 前锁面板式PG9/M16 SW17T
M12B02-04-096	M12防水 B-CODE 2P线端母头 前锁面板式PG9/M16 SW17T
M12B03-04-096	M12防水 B-CODE 3P线端母头 前锁面板式PG9/M16 SW17T
M12B04-04-096	M12防水 B-CODE 4P线端母头 前锁面板式PG9/M16 SW17T
M12B05-04-096	M12防水 B-CODE 5P线端母头 前锁面板式PG9/M16 SW17T
M12D02-04-096	M12防水 D-CODE 2P线端母头 前锁面板式PG9/M16 SW17T
M12D03-04-096	M12防水 D-CODE 3P线端母头 前锁面板式PG9/M16 SW17T
M12D04-04-096	M12防水 D-CODE 4P线端母头 前锁面板式PG9/M16 SW17T



Engagemnr firce	≤50N	Rated volage	2-5pin:60v 6-8PIN:30V	PARTS	MARERIALS	TREATMENT	AMOUNT		
Disengagement force	≥5N	Rated current	2-5pin:4A 6-8PIN:2A		A	HOUSING	PA66+GF	SPECIFY COLOR	1
Mechanical lifespan	≥500	Insulation resistance	≥1000MΩ		B	CONTACT	BRASS	GOLD PLATED	2~8
IP rating	IP67/IP68	Conract resistangce	≤10MΩ		C	OUTER CONTACT	BRASS	NICKL PLATED	1
Flammability	UL94 V-0	Operation Temperature	-40° C~105° C		D	NUT	BRASS	NICKL PLATED	1
				E	O-RING	EPDM	BLACK	1	

REV.	REVISION RECORD	DATE		GENERAL TOLERANCES		SCALE:	NAME	DATE	PART.NO:	DWG.NO:	 WanLian Technology Co., Ltd	
AO	NEW RELEASE	21.11.17		LINEAR	ANGLES	1:1						
				0.0±0.35	X'REF±6'	APPROVED						
				UNIT:mm	0.00±0.25	X'±3'						DESIGNER
			SIZE: A4	0.000±0.10	X'X' ±2'	DRAWN			TITLE:	M12 2~8P线端母头 前锁面板式PG9/M16 SW17T	REV: AO	SHEET: 1/1