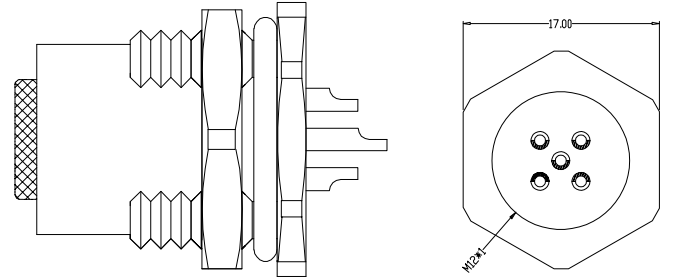
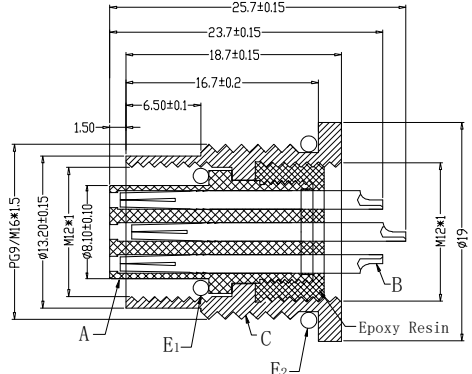
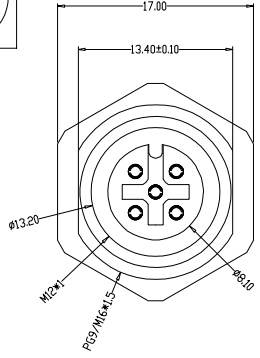
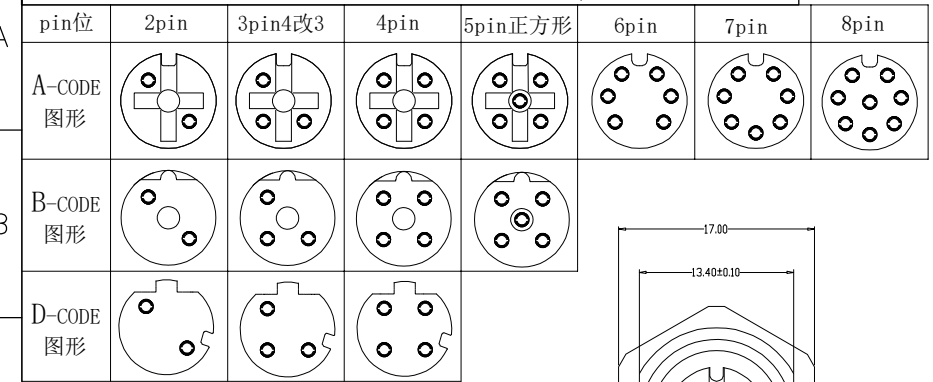


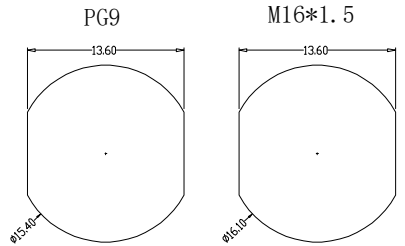
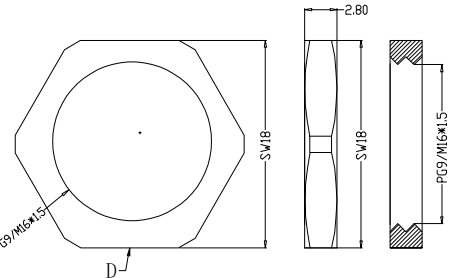
The product using material and processing must conform to the "WL-PZ-001" HSF technical standard control requirements

RoHS



组合图

Recommended Panel Cut-out



P/N	TITLE
M12A02-04-101	M12防水 A-CODE 2P线端母头 前锁面板式PG9/M16 SW17T
M12A03-04-101	M12防水 A-CODE 3P线端母头 前锁面板式PG9/M16 SW17T
M12A04-04-101	M12防水 A-CODE 4P线端母头 前锁面板式PG9/M16 SW17T
M12A05-04-101	M12防水 A-CODE 5P线端母头 前锁面板式PG9/M16 SW17T
M12A06-04-101	M12防水 A-CODE 6P线端母头 前锁面板式PG9/M16 SW17T
M12A07-04-101	M12防水 A-CODE 7P线端母头 前锁面板式PG9/M16 SW17T
M12A08-04-101	M12防水 A-CODE 8P线端母头 前锁面板式PG9/M16 SW17T
M12B02-04-101	M12防水 B-CODE 2P线端母头 前锁面板式PG9/M16 SW17T
M12B03-04-101	M12防水 B-CODE 3P线端母头 前锁面板式PG9/M16 SW17T
M12B04-04-101	M12防水 B-CODE 4P线端母头 前锁面板式PG9/M16 SW17T
M12B05-04-101	M12防水 B-CODE 5P线端母头 前锁面板式PG9/M16 SW17T
M12D02-04-101	M12防水 D-CODE 2P线端母头 前锁面板式PG9/M16 SW17T
M12D03-04-101	M12防水 D-CODE 3P线端母头 前锁面板式PG9/M16 SW17T
M12D04-04-101	M12防水 D-CODE 4P线端母头 前锁面板式PG9/M16 SW17T

Engagemenr firce	≤50N	Rated volage	2-5pin:60v 6-8PIN:30V	PARTS	A	MARERIALS	PA66+GF	TREATMENT	SPECIFY COLOR	AMOUNT	1
Disengagement force	≥5N	Rated current	2-5pin:4A 6-8PIN:2A	B	CONTACT	BRASS	GOLD PLATED	2~8			
Mechanical lifespan	≥500	Insulation resirance	≥1000MΩ	C	OUTER CONTACT	BRASS	NICKL PLATED	1			
IP rating	IP67/IP68	Conract resistangce	≤10MΩ	D	NUT	BRASS	NICKL PLATED	1			
Flammability	UL94 V-0	Operation Temperature	-40° C~105° C	E	O-RING	EPDM	BLACK	1			

REV.	REVISION RECORD	DATE		GENERAL TOLERANCES		SCALE:	NAME	DATE	PART.NO:	DWG.NO:				
A0	NEW RELEASE	21.11.17		LINEAR	ANGLES	1:1						M12XXX-04-101	ENDE05	
				0.0±0.35	X'REF±6'	APPROVED								TITLE:
				UNIT:mm	0.00±0.25	X'±3'								
			SIZE: A4	0.000±0.10	X'X' ±2'	DRAWN	REV: A0	SHEET: 1/1						