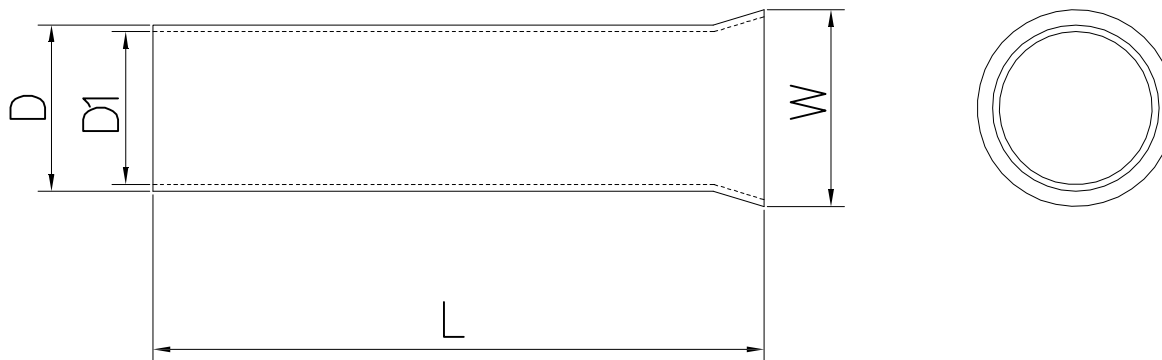


The product using material and processing must conform to the "WL-PZ-001"HSF technical standard control requirements

RoHS



备注：  
 端子材质：紫铜  
 表面处理：镀锡  
 镀层耐温：120° /2小时  
 壁厚：0.18±0.03  
 镀层厚度：0.2 μm-0.5 μm  
 接线类型：绞合线

料号 Item NO	导线截面 Cable Size		mm/inch 主要尺寸			
	A.W.G	mm <sup>2</sup>	D±0.15	D1±0.15	W±0.4	L±1.0
WLLE10-000AE030A20	#7	10	4.9	4.5	5.8	12.0
WLLE10-000AE030A21						15.0
WLLE10-000AE030A22						18.0

REV.	REVISION RECORD	DATE	UNIT:mm	GENERAL TOLERANCES		SCALE: 1:1	NAME	DATE	PART.NO:	DWG.NO:	 WanLian Teconology Co., Ltd
A0	NEW RELEASE	21.11.17		LINEAR	ANGLES	APPROVED	Wang_jr	21.11.17	WLLE10-000AE030XXX	ENDE05	
			0.00±0.25	X°±3°	DESIGNER	Han_Gao	21.11.17	TITLE:		REV: A0	SHEET: 1/1
			0.00±0.10	X°X' ±2°	DRAWN	Zijun_Huang	21.11.17	无绝缘管型单粒续端子 镀锡 接线10mm <sup>2</sup> (7AWG)			