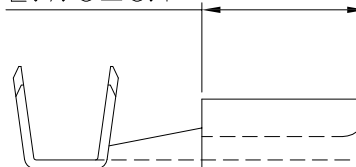


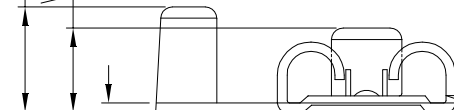
The product using material and processing must conform to the "WL-PZ-001"HSF technical standard control requirements

RoHS

E: 7.0 ± 0.1



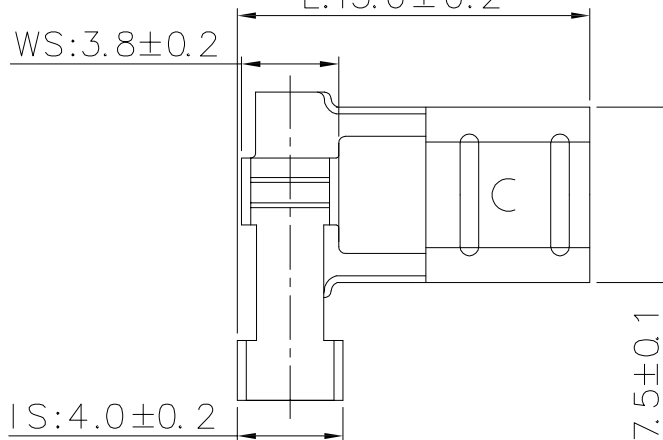
IH: 4.5 ± 0.2
WH: 3.8 ± 0.2



T: 0.4 ± 0.02

L: 15.0 ± 0.2

WS: 3.8 ± 0.2

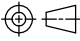



IS: 4.0 ± 0.2

W: 7.5 ± 0.1

备注:

1. 接线: 18-22AWG
2. 端子材质: 黄铜, 表面处理: 镀锡
3. 对插端子: 250公端/T=0.8
4. 拔力范围: $\geq 5\text{kg}$, 插力范围: $\leq 4.0\text{kg}$

| REV. | REVISION RECORD | DATE |  | GENERAL TOLERANCES | | SCALE: 1:1 | NAME | DATE | PART.NO: | DWG.NO: |  |
|------|-----------------|----------|---|---|--------------------------|--|-------------|----------|-------------------------|-------------------|---|
| A0 | NEW RELEASE | 22.05.09 | |  | LINEAR 0.0 ± 0.35 | ANGLES $X^\circ \text{REF} \pm 6^\circ$ | APPROVED | Wang_jr | 22.05.09 | WLLF1F0-AA1010006 | |
| | | | UNIT:mm | 0.00 ± 0.25 | $X^\circ \pm 3^\circ$ | DESIGNER | Han_Gao | 22.05.09 | TITLE: 250系列旗形插片连续端子 | | REV: A0 SHEET: 1/1 |
| | | | SIZE: A4 | 0.000 ± 0.10 | $X^\circ X' \pm 2'$ | DRAWN | LanXuan_Hou | 22.05.09 | | | |