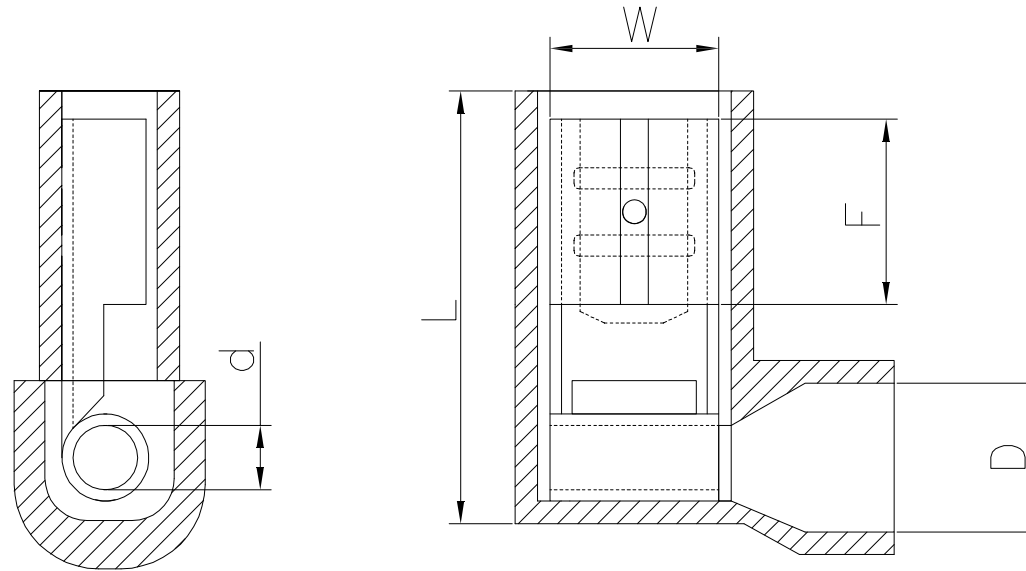
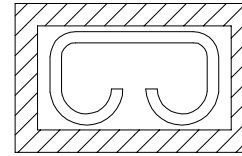


The product using material and processing must conform to the "WL-PZ-001"HSF technical standard control requirements

RoHS



备注:

1. 接压线径: 0.5-1.5mm² (22-16AWG)
2. 端子材质: 黄铜, 厚度: 0.4±0.01
3. 绝缘材质: 尼龙, 绝缘护套温度: 105° C, 绝缘护套颜色: 红色
4. 表面处理: 镀锡, 镀层厚度: 2.5 μm-5 μm, 镀层温度: 120° /2小时
5. 接线类型: 绞合线
6. 最大电流: 10A

ItemNo.料号	接插规格 Connecting spec	材料厚度 Thickness(mm)	Dimension(mm/inch)主要尺寸				
			d±0.2	D±0.2	W±0.2	L±0.3	F±0.3
WLLF1F2-AA093CA59	0.8*6.35	0.4	1.7	4.4	7.6	15.0	8.5

REV.	REVISION RECORD	DATE		GENERAL TOLERANCES		SCALE: 1:1	NAME	DATE	PART.NO:	DWG.NO:	 WanLian Teconology Co., Ltd
A0	NEW RELEASE	21.11.17		LINEAR	ANGLES	APPROVED	Wang_jr	21.11.17	WLLF1F2-AA093CA59	ENDE05	
			0.0±0.35	X'REF±6°	DESIGNER	Han_Gao	21.11.17	TITLE:			
			UNIT:mm	0.00±0.25	X'±3'	DRAWN	Zijun_Huang	21.11.17	尼龙全绝缘护套旗形母插端子 接线 0.5-1.5mm ²	REV: A0	
			SIZE: A4	0.000±0.10	X'X' ±2'						