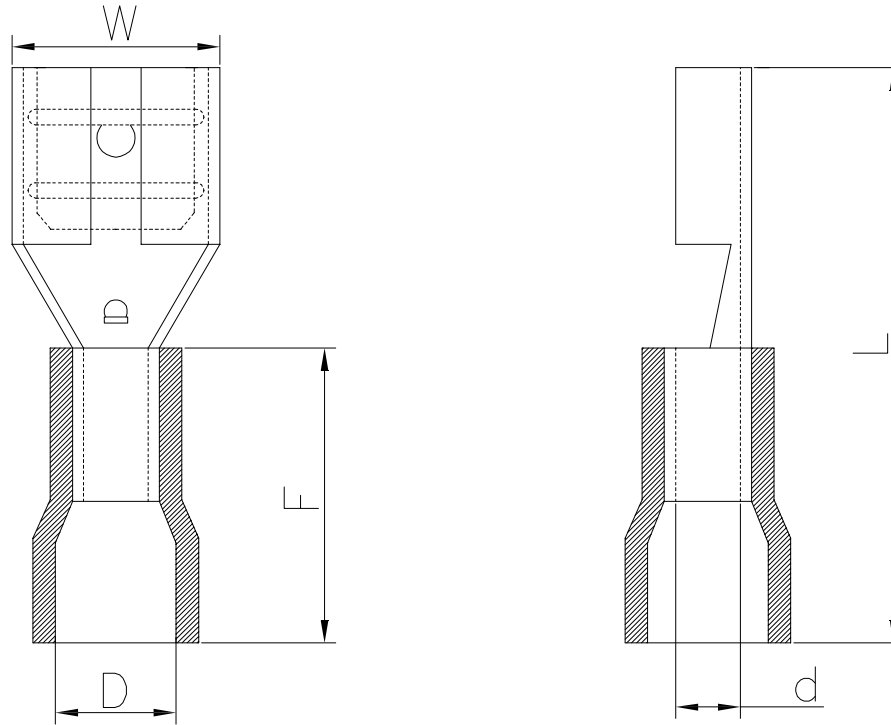


The product using material and processing must conform to the "WL-PZ-001"HSF technical standard control requirements

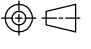

RoHS



备注:

1. 接压线径: 1.5-2.5mm<sup>2</sup> (16-14AWG)
2. 端子材质: 黄铜, 厚度: 0.4±0.01
3. 绝缘材质: PVC, 绝缘护套温度: 常温, 绝缘护套颜色: 蓝色
4. 表面处理: 镀锡, 镀层厚度: 2.5 μm-5 μm, 镀层温度: 120° /2小时
5. 接线类型: 绞合线
6. 最大电流: 15A

ItemNo.料号	接插规格 Connecting spec	材料厚度 Thickness(mm)	Dimension(mm/inch)主要尺寸				
			d±0.2	D±0.4	F±0.4	L±0.5	W±0.2
WLLF1F3-AB003GA70	0.8*6.35	0.4	2.3	4.3	10.5	20.5	7.6

REV.	REVISION RECORD	DATE		GENERAL TOLERANCES		SCALE: 1:1	NAME	DATE	PART.NO:	DWG.NO:	 WanLian Teconology Co., Ltd	
AO	NEW RELEASE	21.11.17		LINEAR	ANGLES	APPROVED	Wang_jr	21.11.17	WLLF1F3-AB003GA70	ENDE05		
			0.0±0.35	X'REF±6°	DESIGNER	Han_Gao	21.11.17	TITLE:		REV: A0		SHEET: 1/1
			UNIT:mm	0.00±0.25	X'±3'	DRAWN	Zijun_Huang	21.11.17	PVC绝缘护套母插端子 接线1.5-2.5mm <sup>2</sup>			
			SIZE: A4	0.000±0.10	X'X' ±2'							